
ELLIS PHD PROGRAM

Information session for applicants
2023



CONTENTS

1. Why ELLIS?

- ELLIS Society
- ELLIS Pillars
- PhD Program: vision
- PhD Committee
- Tracks & requirements
- Program in numbers
- Activities
- Join our community

2. Central Recruiting

- Links
- Important notes
- Your application: 3 parts
- Advisors
- Timeline and selection
- Central evaluation

3. Q&A



WHY ELLIS?

The ELLIS Society

The ELLIS PhD Program

ELLIS FOR EUROPE

European Laboratory for Learning and Intelligent Systems

ELLIS Society



European Laboratory for Learning and Intelligent Systems (founded 2018)

Attract and enable the best minds
Create regional ecosystems around leading AI research
Bring Europe's leading AI hotspots together



Research Programs

ELLIS connects leading experts working on **high-impact problems** that have the potential to drive **breakthroughs** in modern AI. Fellows are organized into **14 programs** ranging from basic research on algorithms to applications in health and climate sciences.



Sites

ELLIS establishes **regional ecosystems** around leading AI research, which serve as international talent magnets and incubators of **innovation**. **40 ELLIS sites** co-operate as part of a **multi-centric AI research laboratory** that attracts the world's best minds.



PhD & Postdoc Program

ELLIS attracts and nurtures **talent**. It offers outstanding young researchers a unique entry point to cutting-edge machine learning research, supporting deep cross-border and interdisciplinary **collaborations** as well as partnerships with top industry labs.

Research Programs

ELLIS connects leading experts working on **high-impact problems** that have the potential to drive **breakthroughs** in modern AI. Fellows are organized into **14 programs** ranging from basic research on algorithms to applications in health and climate sciences.

1

Geometric Deep Learning



Robust Machine Learning



Interactive Learning



Computer Vision



Robot Learning



Human-centric Machine Learning



Theory & Algorithms



Quantum- & Physics-Based ML



Natural Intelligence



Health



Earth & Climate Sciences



Natural Language Processing



Symbolic Machine Learning



Multimodal Learning Systems





Sites

ELLIS establishes **regional ecosystems** around leading AI research, which serve as international talent magnets and incubators of innovation. **40 ELLIS sites** co-operate as part of a **multi-centric AI research laboratory** that attracts the world's best minds.

2





PhD & Postdoc Program

ELLIS attracts and nurtures **talent**. It offers outstanding young researchers a unique entry point to cutting-edge machine learning research, supporting deep cross-border and interdisciplinary **collaborations** as well as partnerships with top industry labs.

3



excellence

*effective
mechanisms
for collabor-
ation*

*benefitting
society and
economy*

ELLIS PHD PROGRAM

PHD PROGRAM: VISION



attract & support excellent young researchers in ML



metaprogram on top of existing graduate programs



European collaboration



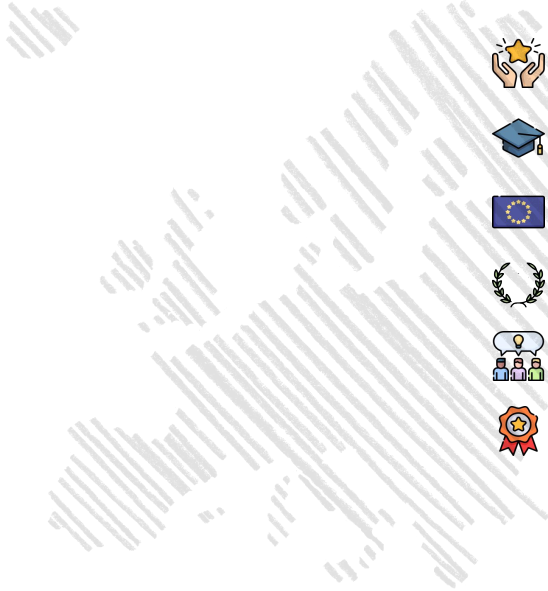
focus on excellence



joint supervision within the ELLIS network



aiming to become the #1 brand in ML



ELLIS PHD COMMITTEE

Chairs



Andreas
Geiger



Florence
d'Alché-Buc



Christoph
Lampert



Bernhard
Schölkopf



Josef
Sivic



Committee Members

Coordination Office



Lynn
Anthonissen
*Scientific
Coordinator*



Jessica
Endress
Assistant



Daniel
Selinger
*Web
Developer*

New Committee Members



Alex
Bronstein



Mario
Fritz



Gergely
Neu



Ingmar
Posner



Torsten
Sattler



Siyu
Tang



DIFFERENT TRACKS



European collaboration

academic track

- research stay at a top academic institution abroad (min. 6 months)

industry track

- research at a European industrial lab (min. 6 months)

interdisciplinary track *to be introduced soon*



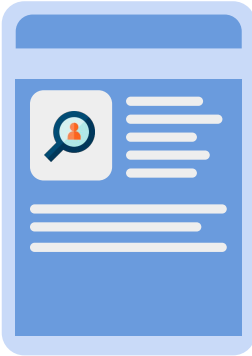
joint supervision within the ELLIS network

1 ELLIS fellow/scholar/unit faculty

+

1 ELLIS fellow/scholar/unit faculty or member

TRACK REQUIREMENTS



Advisors: 1 ELLIS Fellow/Scholar/Unit faculty + 1 ELLIS Fellow/Scholar/Unit Faculty/Member

Partners:

Academic track: 2 European academic institutions located in different countries

Industry track: 1 European academic institution + 1 European industry player

Work split:

Academic track: min. 6 months at secondary academic partner

Industry track: min. 6 months at the industry partner + min. 50% at the academic partner

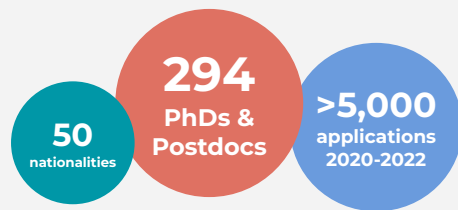
Funding: funding must be provided by advisors

Candidate: Centrally reviewed and shortlisted in *central recruiting*

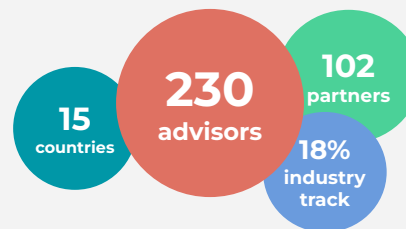
Focus: excellence in research. Candidates are expected to publish in top venues.

THE PROGRAM IN NUMBERS

Recruitment

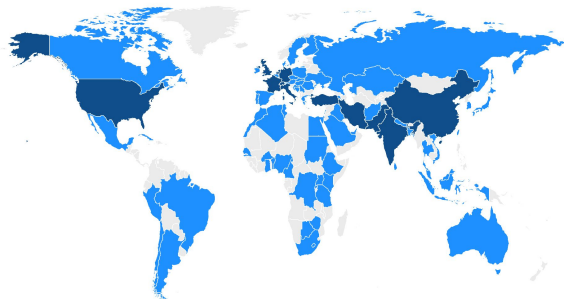


Collaborations



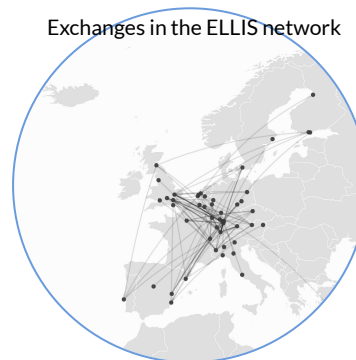
A program with global reach

Country of residence of 2022 applicants (in blue)
(countries in dark blue each account for more than 1% of registrations)



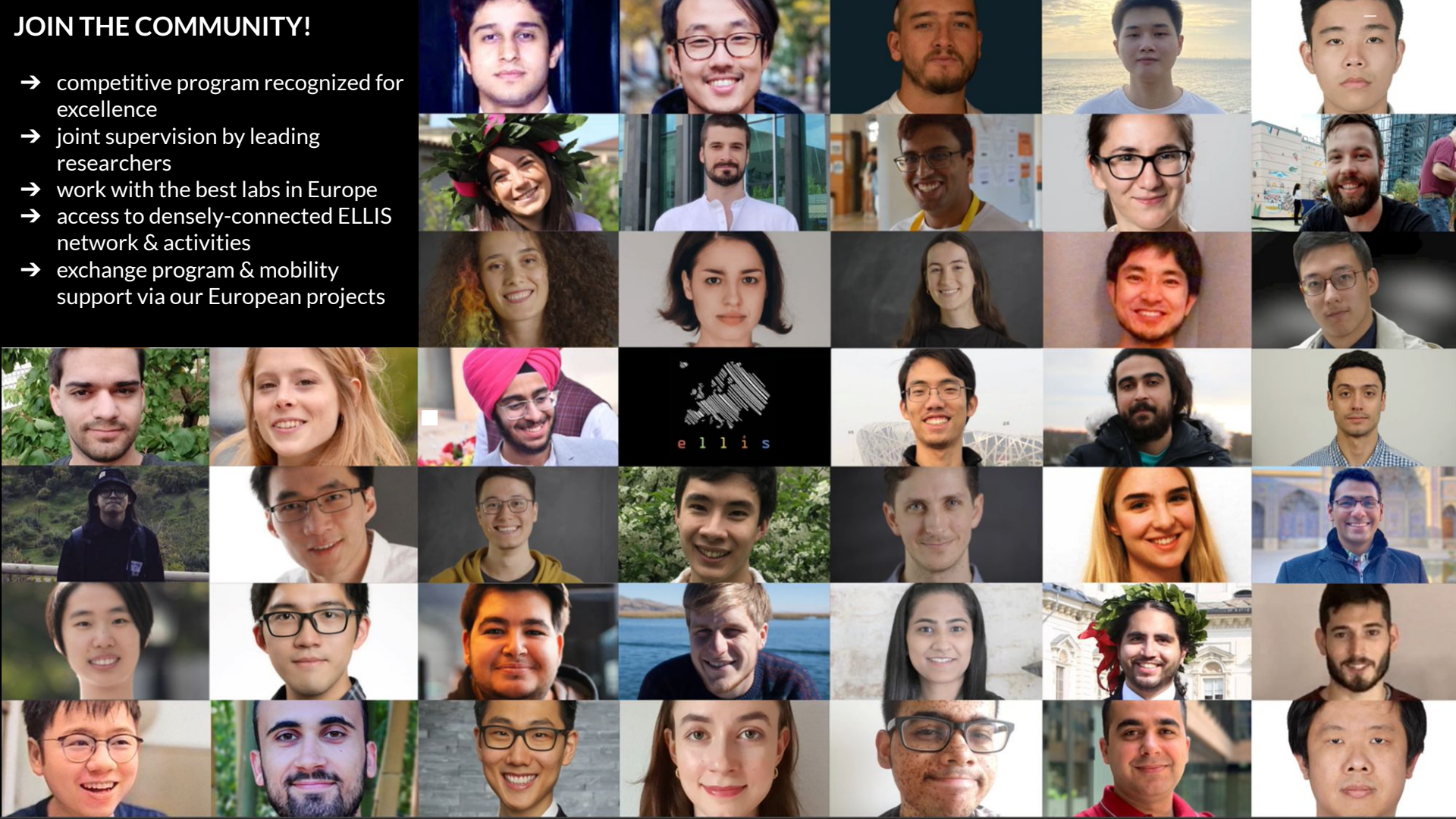
More than 147 years of European researcher mobility

Exchanges in the ELLIS network



JOIN THE COMMUNITY!

- competitive program recognized for excellence
- joint supervision by leading researchers
- work with the best labs in Europe
- access to densely-connected ELLIS network & activities
- exchange program & mobility support via our European projects





ACTIVITIES

ELLIS Doctoral Symposium

Sep 21 @Tübingen >> Sep 22 @Alicante >> Sep 23 @Helsinki >> Aug 24 @Paris

ELLIS Summer & Winter Schools

e.g. 2023 schools in Cambridge, Manchester, Modena

Mobility funds

Travel support via European projects based on the ELLIS network (ELISE, ELSA, ELIAS)

Reading Groups

Human-Centric Machine Learning

Mathematics of Deep Learning

ellis.eu/reading-groups ⇒ **Join now!**

& many other ELLIS events

- ... at the ELLIS units

- ... meet-ups at large conferences

- ... small-scale workshops of the Research Program with leading scientists
in a particular field

- ...

HOW TO JOIN?

Prospective PhD student? ⇒ *central recruiting*

(1x year, open PhD positions, single point of entry in EU)

Already started a PhD with an ELLIS faculty? ⇒ *nomination*

(year-round, light-weight process, existing collaborations)

CENTRAL RECRUITING

How to apply
Timeline and selection

USEFUL LINKS

- **Program webpage:** ellis.eu/phd-postdoc
 - **Call for applications:**
<https://ellis.eu/news/ellis-phd-program-call-for-applications-2023>
⇒ registration link
 - **Portal:** apply.ellis.eu
 - **FAQs:** ellis.eu/FAQS
-

IMPORTANT NOTES

- **ELLIS Central Recruiting as “single entry point” for top-notch research positions in Europe**
⇒ Applicants use our platform to find and be found for PhD opportunities in machine learning and related fields offered by advisors in the ELLIS network. Advisors in the ELLIS network use our platform to indicate to applicants that they are looking for PhD students, and use the platform to find talented students that could be a good match for their labs.
 - **ELLIS is a “meta-program”; the ELLIS society does not employ nor fund PhD students.**
⇒ If you get an offer, you will be funded through your advisors’ resources (nature and amount of funding and benefits may vary depending on country, institution etc.: contract vs. stipend). In some cases, a parallel application to a doctoral school, funding body or vacancy is required in order to be considered for that particular institution.
⇒ Hiring process is local; conditions and regulations stipulated by the respective institution; admission requirements of local institutions apply
⇒ Ask questions during interviews when in doubt
-

YOUR APPLICATION: 3 PARTS

Deadline: November 15, 23:59 CET

All application documents must be submitted before the application deadline. Only complete applications submitted by the specified deadlines will be considered.

Tips: Mind the timezone. Don't submit last minute; submit at least a couple of days in advance to avoid any technical issues day of. Remind your referees to submit in time (you can check the status in the portal).

Note reference request: *Triple-check that the email is valid; you will not be contacted if the request bounces back. Do not send a formal reference request via the portal before you have contacted your referees personally. Contacting your referees directly beforehand ensures that they are willing to write a strong recommendation and will have the time to do so before the deadline. After you send a request to one particular referee, you will no longer be able to make any changes to that referee's fields; at this point, you can no longer change/replace this referee or update their details.*

After the application deadline (November 15), you can no longer send out reference requests!

3 components

(1) Application form

(2) Documents

- Motivational letter (max. 2 p.; references can be included on a 3rd page if needed) in which you (1) explain why you want to earn a PhD within the ELLIS network and (2) include a research statement describing past research projects and interests as well as the future direction of your research.
- CV
- Unofficial transcripts (+ English translation)
- (Optional) Additional documents (e.g. thesis, paper, project portfolio)

(3) References (2-3)

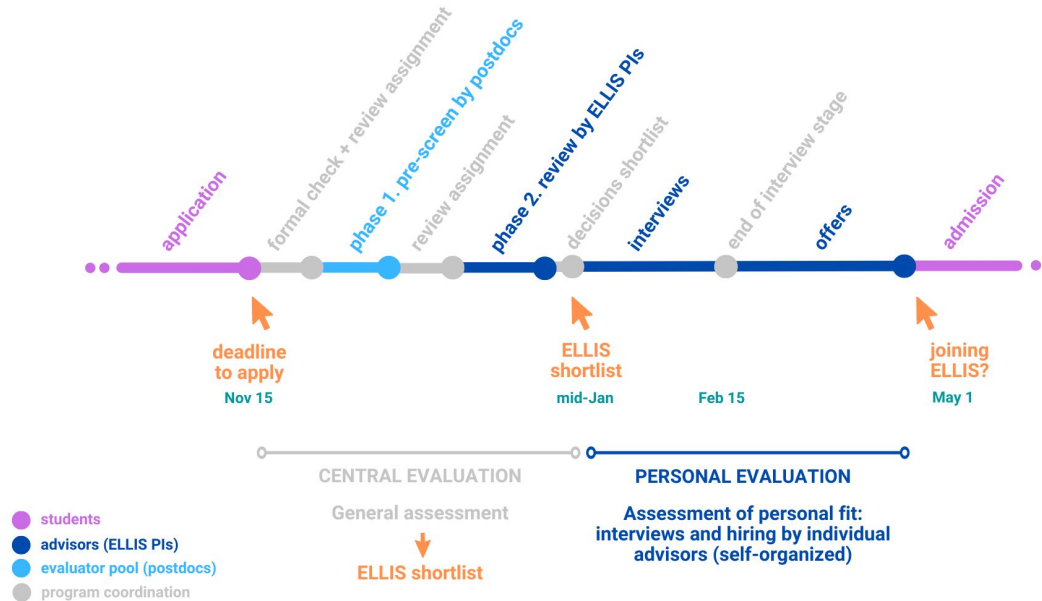
- request your reference letters via the system (min. 2)
 - referees receive a link to upload their recommendation - referees have time to submit their reference until November 25, but applicants must request the reference via the portal BEFORE the application deadline on November 15
-

TIMELINE & SELECTION

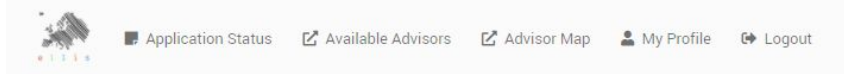
Important dates

- November 15: Application deadline
- November - early January: **Multi-stage review** ⇒ **shortlist of candidates**
- By mid-January: students are notified whether they are shortlisted
- January-February 15: interviews (self-organized by Advisors and their teams)
- Late February-March: advisors make offers
- May 1: deadline to inform ELLIS about advisor-student match
- September 15: deadline to inform ELLIS about the co-advisor
- Start in 2024; no common start (decided with advisor); unlikely before April; most will start around Sept/Oct 2024

Admission will be competitive
(~5 % acceptance rate)



ADVISORS



Which advisors?

- Table: “Available Advisors” ⇒ who is recruiting?
- Advisor Map ⇒ find similar advisors based on research areas

Notes

- You can indicate up to 10 “**preferred**” advisors in the application form. These are **preliminary** preferences; your “**first**” choice in the application does not need to be your “**first**” choice after the interviews. In order to join ELLIS, you must eventually get an offer from one of the advisors in the “Available Advisors” list.
 - Familiarize yourself with their research, read up on requirements, parallel application and their “comments” in the portal and on their websites
 - Main goal: for successful candidates to find a match with primary advisor
 - ⇒ co-advisors come in at a later stage (decide by Sep 2023); and can be selected from a wider group
 - Primary advisor: academic institution
 - Secondary advisor: academic institution in a different country (Academic Track)
 - Secondary advisor: industry partner (Industry Track)
 - **Interviews:** Shortlisted candidates do not automatically get to speak with all of their preferred advisors; advisors decide whom to invite. Advisors you did not list as “preferred” advisor may contact you if they think you could be a good fit. You can interview with multiple advisors. In previous rounds, about one third of the shortlisted candidates got an offer. Some shortlisted candidates did not get invited for interviews.
 - **Offers:** If you interview with multiple people and more than one advisor is interested in your profile, it can be the case that you get multiple offers. It can also be a good opportunity for a collaboration as part of our co-advisor model (different country).
-

CENTRAL EVALUATION

The following criteria address the candidate's **scientific aptitude** based on **CV, transcripts, motivational letter and letters of reference**. Top-tier publications are welcome, but not a necessary condition for admission.

- prior academic performance and potential
- track record relative to opportunities, career stage and any systematic differences in metrics for different areas of research
- competence for the selected research area
- uniqueness and quality of the motivational letter/research statement
- contribution to establishing an interdisciplinary and diverse community and culture
- general fit with the ELLIS program and ELLIS vision

Eligibility notes

- Requirements for starting a PhD may differ across institutions/advisors (e.g. eligibility of BSc students, grades/GPA, language tests, etc.); admission requirements of local institutions apply (incl. parallel application if required)
-



HOW TO REACH US?

ELLIS Society

Website: ellis.eu

ellis.eu/newsletter

twitter.com/ELLISforEurope

facebook.com/ELLISforEurope

linkedin.com/company/ellisforeurope

youtube.com/@ELLISforEurope

Mastodon:
ellis.social/@ELLISforEurope

P&P Office

ellis.eu/phd-postdoc

phd@ellis.eu
general questions, academic
track, mobility fund

Support ELLIS

ellis.eu/supporters/individuals



Q&A

Application components / Eligibility

- Do you need a **research publication** to be accepted? ⇒ No, research publications are not a necessary requirement for admission via central recruiting; they may increase your chances, as they can be evidence of your research potential and independence (depending on venue of publication and your contribution to the paper)
- **Degree:** Do you need a Computer Science degree to be accepted? ⇒ No, this is not an absolute requirement (many of our students have degrees in physics, maths, engineering or related areas). You need to bring the right background and skills for your area of research.
- **References:** Professional references are accepted, as long as the referee can comment on your academic/research abilities (e.g. referees from industrial research labs). 2 references are required; they are an important component of your application. Applications without references will not be processed further.
- There are no age constraints for applications; if you have been away from academia for a long time, make sure to write a strong motivational letter explaining why you want to move back to academia and how you fulfill the academic standards.
- Can I apply if I'm already a PhD student?
 - ⇒ Yes, if you are not happy with your current position and want to apply for a new PhD position with one of the listed ELLIS faculty.
 - ⇒ If you are already doing a PhD with an ELLIS advisor, then you should join the program via nomination (light-weight process). If you do not fulfill the nomination requirements, you can apply via the central recruiting but only if you are in your first 6 months of the PhD. Note that only advisors in the list of "Available advisors" can accept students via the Central Recruiting. Otherwise, you should join the program via nomination (this can be done at any point during your PhD as soon as requirements are fulfilled).

Contact advisors beforehand?

- It is not necessary to contact the ELLIS faculty before applying. Note that applications are not visible to the faculty before the application deadline. After the closing date for applications, all complete applications will be thoroughly reviewed. The relevant professors will see your application at that stage. Of course, if you have a specific question about the research interests of a faculty member, you should feel free to contact them about this.
 - Note: The list of recruiting advisors can be found on the portal. On the portal, you can indicate your preferences for specific advisors. You can select up to 10 advisors from the list. Advisors on the portal have access to all ELLIS applications but can also filter on students who indicated a preference to work with them.
-

Review

- Will all advisors mentioned in the application review my application, or will the application be passed on according to my selected order?
 - **Central review:** In the first phase, applicants are pre-screened by three evaluators from our pool. Evaluators are appointed by the Advisors (typically postdocs in their labs). Evaluators are assigned based on research areas and advisor preferences (where possible). In the second phase, candidates are reviewed by three of the participating ELLIS PIs to ensure the candidate fulfills ELLIS standards.
 - **Personal review:** Advisors have access to all applications (also students that did not “select” them), but usually only filter on those that mentioned them in their preference list. They will invite candidates they think would be a great fit for an interview. The number of interviews PIs conduct differ, but is usually between 3-5 students for one position.

Selection process

- Can I have multiple interviews to find the best personal fit (assuming that multiple advisors are interested)? ⇒ Yes!
- Can I be selected by multiple supervisors? ⇒ Yes, you may be invited by / get an offer from more than 1 advisor.
- Is the acceptance to ELLIS based on the mentioned professors? ⇒ Shortlisting is determined by your median scores of multiple reviews by experts. Your acceptance to ELLIS is dependent on you getting an offer from one of the advisors in the list of “Available Advisors”.
- If I’m not taken by one of the 10 advisors I listed, could I still interview / get an offer from other advisors in the list? ⇒ Yes, this is possible. Be aware that you may not be on their “radar” if you did not list them explicitly in the form.

Parallel application

- Read the notes on the portal and read the information on the website of the local program or university (check if there is a deadline!).

Matching process

- We use a matching algorithm to assign reviewers based on overlap in research areas and the applicants’ advisor preferences.
 - In previous years, we had an additional matching process for interviews and/or offers that was based on preference lists submitted by applicants and advisors. This has now been replaced by a central review process with a shortlist and self-organized interviews and offers by advisors.
-

Funding / IP / Entrepreneurship

- ELLIS does not employ PhD students (via the ELISE project we have a mobility fund to support travel for research exchanges). If you get an offer, you will be funded through your advisors' resources. After accepting the offer, the student and the two advisors will sign a letter of intent which specifies the funding plan (among other things). The ELLIS Team cannot give you any details about the amount of funding beforehand because it may differ from country to country and from advisor to advisor. You can ask for more details during the interview.
- IP: Intellectual property rules vary greatly by institution (various types of license agreements) so check the agreements/contracts you sign at the university. The ELLIS Society does not claim any IP.
- Entrepreneurship: Many ELLIS fellows have founded start-ups and are well connected. Partnering institutions typically also have projects/measures in place to foster technology transfer (workshops, partner network, incubators). Check out the advisors' profiles, in particular the sections on Industry & Entrepreneurship.

Working conditions

- Depends on the institution where you are hired (e.g. availability part-time, funding source). ⇒ Ask questions during the interview.
- Work part-time? ⇒ Depends on local regulations. Discuss during the interview.
- UK & Brexit: EU nationals will be treated in the same way as other "international students"; international students have access to specific funding schemes for international students (check with the institution);
<https://www.findaphd.com/blog/1863/what-brexit-means-for-masters-degrees-phds-and-other-students>

Finding an exchange host

- After admission with the primary advisor; discuss together with the primary advisor.
-