



e l l i s

European Laboratory for Learning and Intelligent Systems

Annual Report

2025

ellis.eu

Contents

Figures & Facts of 2025.....	4
Key Milestones.....	5
Science & Research.....	11
Members.....	20
ELLIS PhD & Postdoc Program.....	25
ELLIS Research Programs.....	33
ELLIS Sites.....	41
Projects Building on ELLIS.....	66
Communication and Outreach.....	71
Governance.....	76



Letter from the President

Dear Friends and Colleagues,

Looking back on 2025, I am struck by how much ELLIS has grown not just in size, but in consequence. This was a year in which the organisation moved from promising newcomer to genuine force in the European AI landscape, and I am honoured to have taken on the role of Board President as part of that journey. Alongside a newly elected Board, I am eager to build on the extraordinary work of those who came before us and to push hard on the opportunities ahead.

One of the year's defining moments was the inaugural AI in Science Summit (AIS25), which launched the European Commission's Resources for AI Science in Europe (RAISE) and brought together leading scientists, commissioners, ministers, policymakers, and industry leaders to grapple seriously with a central question: how can AI transform scientific discovery, and how can Europe lead that transformation? ELLIS played a visible and consequential role throughout, and the conversations that began there will shape research agendas and policy for years to come. December brought another highlight: the ELLIS UnConference and EurIPS in Copenhagen. EurIPS, a NeurIPS-endorsed European conference, gave researchers a dedicated home in Europe for presenting work accepted

at one of the world's premier Machine Learning venues. The energy in the room was palpable. A series of independent workshops followed, reinforcing what I have come to think of as one of ELLIS's quiet superpowers: the ability to convene a community that is genuinely excited to be in the same room, working on hard problems together.

Equally impressive is the continued growth and success of our PhD & Postdoc Program. It remains one of the most powerful expressions of what ELLIS stands for: developing the next generation of researchers who will define the field. Alongside that, the science and research awards received by ELLIS Members this year serve as independent validation of something we already know — that the fundamentals of Machine Learning and AI being pursued across our network are genuinely world-class. None of this happens without people. The synergy between ELLIS's researchers and our professional research management team is something I want to name explicitly, because it is easy to overlook. Running an organisation that aspires to excellence and positive impact at scale requires both brilliant science and reliable execution. We are fortunate to have both, and that



combination is core to what makes ELLIS work.

In 2026, we have a clear set of priorities. We will be setting up the dedicated Events Area, building on the momentum of the UnConference and EurIPS to give Europe an even stronger stage for top-tier AI research. We will also dedicate serious effort to fundraising, not to replace the culture of volunteer participation that has always been central to ELLIS, but to complement it with full-time capacity at the pressure points where we need it most. And we are working to strengthen our Contracts and Grants coordination, so that we can more effectively connect the excellence in our research programmes with the public and private funding opportunities they deserve. ELLIS succeeds because of a large and diverse set of stakeholders — researchers, institutions, funders, policymakers, and partners — who believe that excellent, open, European AI research matters. Thank you for being part of that.

Warm regards,

Serge Belongie

ELLIS Board President

Figures & Facts of 2025

The European Laboratory for Learning and Intelligent Systems (ELLIS) is a pan-European network of excellence connecting top AI researchers and institutions across national and institutional boundaries. Its mission is to secure Europe's long-term sovereignty, competitiveness, and international leadership in AI – ensuring that this transformative technology is developed responsibly, openly, and for the benefit of society as a whole.

Network

1,942 Members	408 Fellows	153 Scholars	355 Fellow & Scholar Nominations	578 PhD Students & Postdocs
42 Units	1 Associate Unit	2 Institutes	100+ Affiliated Institutions	17 Countries

Collaborative Research

1,584 Joint Paper Publications	22B Parameters in EuroLLM-22B	24 EU Languages
20 Members Publish Joint Paper at ACL		

Outreach

7.1k Newsletter Subscribers	6.7k Daily Website Visits
400k+ Social Media Engagements	4M+ Social Media Impressions
20 Pre-NeurIPS Fest Participating Sites	7 Pre-ICML Fest Participating Sites

Grants

217 Members with ERC Grants
11 Members with ERC Starting Grants

Conference Contributions

NeurIPS 804 Total Papers 12.9% of conference	520 Unique Member Authors	85 Total PhD Papers	56 Unique PhD Authors
ICML 449 Total Papers	173 Unique Member Authors	41 Total PhD Papers	
ICLR 520 Total Papers	59 Total PhD Papers		

Key Milestones

ELLIS Society Welcomes New Board

In 2025, the ELLIS Society voted to confirm its newly elected ELLIS Board for two years, ensuring the continuous evolution of its mission to propel Artificial Intelligence and Machine Learning research across Europe.

The ELLIS Board will be led by Serge Belongie (University of Copenhagen) succeeding the first President and ELLIS Co-Founder Bernhard Schölkopf (ELLIS Institute Tübingen

& Max Planck Institute for Intelligent Systems), whose leadership established the strong foundation for ELLIS.

As the primary decision-making body of ELLIS, this appointed leadership team plays a crucial role in shaping the strategic agenda of ELLIS, working closely with Area Directors to translate that vision into impactful actions for AI made in Europe.



Serge
Belongie
Board
President



Nuria
Oliver
Board Vice
President



Torsten
Sattler
Board
Treasurer



Nicolò
Cesa-Bianchi



Florence
d'Alché-Buc



Samuel
Kaski



Danica
Kragic



Neil
Lawrence



Oliver
Stegle

[Get to know the Board Members →](#)



ELLIS Institute Finland Officially Opens with AI Summit & Scientific Day

The ELLIS Institute Finland officially launched at the AI Summit in Turku, Finland, on 17 November, marking a major step in Europe's bid for global AI leadership by establishing a world-class, well-funded research hub that builds on Finland's Machine Learning strengths and connects universities, industry, and top-tier computing resources within the pan-European ELLIS network.

The establishment of ELLIS Institute Finland marks it as the second ELLIS Institute alongside ELLIS Institute Tübingen in Germany. The creation of the Institutes is crucial to ELLIS's mission of attracting top global talent and fostering innovation at a level competitive with the world's top research institutions.

The new Institute is strategically positioned to strengthen Europe's technological resilience and advance research objectives by operating in partnership with Finnish universities, research and innovation organisations, and businesses, backed by public and private funding (including support from Finland's Ministry of Education and Culture and Foundation PS) with access to computing resources such as the LUMI supercomputer and the European AI Factory.

Following the main summit in Turku, the ELLIS Institute Finland hosted its inaugural Scientific Seminar on 18 November in Espoo.

[Read more about the scientific program and insights →](#)



L to R: Peter Sarlin, Founder of Foundation PS and former CEO of Silo AI; Serge Belongie, current ELLIS Board President; Finnish Prime Minister Petteri Orpo; Bernhard Schölkopf, Scientific Director of ELLIS Institute Tübingen, Co-Founder & former Board President of ELLIS; and Samuel Kaski, Founding Director & Professor at ELLIS Institute Finland, and ELLIS Board Member



Above: Edith Heard (former EMBL Director General) and Bernhard Schölkopf (ELLIS Co-Founder and former ELLIS President) after signing the Memorandum of Understanding.

Below: Group picture of ELLIS and EMBL researchers and representatives at the event on "Shaping Europe's AI Leadership" in Brussels on 14 January 2025, during which the MoU was officially signed.



EMBL and ELLIS Deepen Relationship to Drive AI in European Life Science Research, Training, and Technology

The European Molecular Biology Laboratory (EMBL) and ELLIS agreed upon a Memorandum of Understanding (MoU) to promote interdisciplinary training and develop innovative projects that address pressing challenges in human and planetary health. Former EMBL Director General Edith Heard and former ELLIS President Bernhard Schölkopf signed the agreement at an event on "Shaping Europe's AI Leadership" in Brussels on 14 January 2025.

The strategic partnership focuses on enhanced collaboration in the fields of AI and Life Sciences through stimulating scientific exchange, supporting training and developing innovative projects. Leveraging their combined expertise and networks, the two organisations aim to position Europe at the forefront of AI-driven advancements in Life Sciences research.

As Bernhard Schölkopf summarises, "Machine Learning has been transforming the way we build scientific models in many domains. Building upon training data, it excels whenever systems are too complex to be modelled explicitly. EMBL understood this early on, making it the perfect partner in this endeavour. Our joint goal is to enable scientific breakthroughs that improve health and our understanding of life itself."

[Read more about the partnership →](#)

ELLIS Partners with New Max Planck Artificial Intelligence Network to Expand Doctoral Opportunities

ELLIS is strengthening its role in training the next generation of AI researchers by joining forces with the newly launched Max Planck Artificial Intelligence Network (MP-AIX), a doctoral program initiated and funded by the Max Planck Society. It provides fully funded PhD fellowships to outstanding candidates in Machine Learning, Artificial Intelligence, and their applications.

The program is distinctive in its dual-supervision model. PhD Students are jointly supervised by Directors or Group Leaders from different Max Planck Institutes, with the possibility of co-advisors from the ELLIS network in which one advisor works in a field close to Machine Learning / AI, and the other advisor works in an application area.

Through ELLIS's involvement, students can benefit from co-advisors within the ELLIS community, strengthening ties across Europe's AI ecosystem and ensuring a vibrant exchange of expertise.

[Read more about the partnership →](#)



ELLIS Takes Leading Role at AI in Science Summit

On 3-4 November, the AI in Science Summit 2025 (AIS25) in Copenhagen brought together leading researchers, industry experts, and policymakers to discuss how Artificial Intelligence is transforming scientific discovery across disciplines. The event also served as a key platform for shaping Europe's strategic agenda for AI-driven science, including the announcement of the European Commission's newly launched RAISE initiative, a €3 billion programme to develop shared resources and collaborative infrastructures for AI-enabled research.

ELLIS' participation in the Summit was scientifically important as it strengthened the network's position within Europe's rapidly evolving AI-for-science ecosystem and aligned its research priorities with major European research infrastructure efforts.



Key contributions and impact:

- **Strategic positioning in AI for science**
ELLIS' presence at the Summit highlighted its role as a leading European network for foundational AI research, reinforcing its standing within the core community working at the intersection of AI and scientific discovery.
- **Contribution to the scientific programme**
ELLIS Members, Scholars, and Fellows participated as speakers and organisers including co-organising the "Science for AI" workshop with the ELIAS Alliance, while ELLIS President Serge Belongie chaired the Summit's Steering Committee, underscoring ELLIS' scientific leadership.
- **Alignment with European research infrastructures (RAISE)**
Through direct exchanges with senior European Commission representatives, ELLIS presented its research mission and the ELIAS Alliance, positioning itself as a key scientific partner within the RAISE framework.
- **Scientific visibility and network growth**
ELLIS was widely referenced across talks and panels, with strong booth attendance and numerous inquiries about membership, new Units, and collaborations reflecting the Summit's impact on expanding the network.

[Read more about the event →](#)

Representatives of ELLIS and ELIAS Alliance met with European Commission Executive Vice President Henna Virkkunen and Commissioner Ekaterina Zaharieva in front of the ELLIS exhibitor booth.

EurIPS & the ELLIS UnConference Bring Together the European AI Community

From 2-7 December 2025, the inaugural EurIPS conference in Copenhagen established a major new European venue for Machine Learning research. The week combined the ELLIS UnConference—a community-organised kick-off day—with EurIPS, a NeurIPS-endorsed conference showcasing NeurIPS-accepted work and fostering exchange on foundational and applied AI research. Together, they addressed a longstanding need for a high-quality European stage, reducing the geographical barriers of North American conferences and strengthening Europe’s presence in global AI research.

Key contributions and scientific impact:

- **Kick-off and community leadership**
The ELLIS UnConference opened the week with researcher-led workshops and an open poster session, creating a collaborative space for sharing results and exploring emerging topics, directly reflecting ELLIS’ mission to foster inclusive, interdisciplinary research across Europe.
- **ELLIS scientific leadership and programme engagement**
ELLIS Members, Fellows, and Scholars played prominent roles throughout EurIPS as workshop organisers, session chairs, and programme contributors, ensuring Europe’s research priorities were well-represented on a global stage.
- **Community participation and collaboration**
With around 2,200 attendees, the combined events exceeded expectations, facilitating meaningful scientific exchange across career stages and fostering new research collaborations across the European AI community.



- **Industry engagement and initiatives**
EurIPS hosted a Startup Village alongside several initiatives bridging European AI research with industry, including SPRIND’s Next Frontier AI’s €125M funding programme, the new Pan-European AI Research Entrepreneurs Network, and the ELIAS Startup Opportunities platform.

ELLIS’ involvement helped create and deliver a landmark European research venue, increasing the visibility and accessibility of world-class Machine Learning science and strengthening the collaborative networks underpinning sustained AI progress. Building on the success of the conference, ELLIS formally established a new Events Area in December to further facilitate opportunities for research exchange within Europe.

We would like to express our sincere appreciation to our financial supporters for the UnConference, Max Planck Institute for Intelligent Systems and the Ministry of Science, Research and the Arts of Baden-Württemberg.

[Read more about the event →](#)

Science & Research

ELLIS's scientific footprint is reflected both in the collaborative activities of its members and in its excellent research contributions. As a network, ELLIS facilitates cooperation among independent research groups by fostering collaboration through joint publications, jointly supervised PhD Students and Postdocs, participation in workshops and conferences, and coordinated research initiatives.

ELLIS Fellows, Scholars, and Sites regularly collaborate and represent the network in international scientific forums, contribute to major conferences, and organise workshops and symposia under the ELLIS name.

In this context, ELLIS-affiliated research is visible across four main dimensions:

- **Advancing foundational AI research:**
ELLIS-affiliated researchers contribute cutting-edge work in core Machine Learning areas such as Geometric Deep Learning, Probabilistic Modelling, Foundation Models, and Reinforcement Learning, with strong representation at leading conferences such as ICLR, ICML, and NeurIPS.

- **Bridging AI with other scientific disciplines:**
The network promotes the use of AI methods in fields such as Life Sciences, Climate Science, and Materials Research through dedicated collaborations and initiatives, including strategic partnerships and thematic activities.
- **Strengthening European research infrastructure:**
ELLIS connects research groups across Europe through coordinated doctoral training, joint supervision, and shared scientific events such as Pre-ICML and Pre-NeurIPS Fests, helping to reduce fragmentation and build a more integrated research ecosystem.
- **Developing the next generation of AI researchers:**
Talent development is central to ELLIS's long-term mission. Through its PhD Program, partnerships with the Max Planck Artificial Intelligence Network, RIKEN and CIFAR, and structured training activities, ELLIS supports early-career researchers in developing at the highest international level while remaining embedded in the European research landscape.



“Advances in artificial intelligence should ultimately serve to augment and complement human intelligence – enabling new scientific discoveries, supporting researchers across disciplines, and helping address complex societal challenges.”

*Nuria Oliver, ELLIS Vice President, Director of the ELLIS Unit
Alicante Foundation*

Scientific Purpose: Approach, Goals, and Principles

ELLIS acts as a virtual AI research institute to help ensure Europe's sovereignty and competitiveness in the field of modern AI and its scientific activities are achieved through open collaboration across institutional and national boundaries.



ELLIS Workshops and Webinars

AI for Good Webinar Series: "From Molecules to Models" Featuring ELLIS Programs

The AI for Good webinar series titled "From Molecules to Models" was launched by ELLIS as part of the United Nations' AI for Good Initiative to highlight and promote the contributions of ELLIS-affiliated researchers and Programs to AI applications in the Life Sciences and related interdisciplinary fields. The series began in early 2025 with bi-monthly sessions that showcased research from multiple ELLIS Programs, including topics such as Multimodal Foundation Models, toxicity mitigation in Language and Vision Models, protein-protein interaction design, Machine Learning for Earth and Climate Sciences, Human-Centric Machine Learning, and Geometric Deep Learning.

These presentations were intended to foster cross-disciplinary engagement and provide interactive discussion opportunities with experts. Following the initial set of talks, the series continued through late 2025 and into early 2026, featuring additional webinars by ELLIS Members on diverse topics such as Climate Risk Modelling, fairness in AI, Causal Effect Estimation, advances in non-Euclidean convolutional networks, AI trust and engagement, Generative AI, and Sustainability-Oriented Machine Learning.

The ongoing series reinforces ELLIS' engagement in AI for Good by disseminating cutting-edge research, strengthening interdisciplinary collaboration, and aligning AI innovation with broader societal and scientific challenges.

[See all the sessions and speakers →](#)

Helmholtz-ELLIS Workshop on Foundation Models in Science

The Helmholtz-ELLIS Workshop on Foundation Models in Science was held on 18-19 March 2025 in Berlin, jointly organised by the Helmholtz Foundation Model Initiative and ELLIS Units in Heidelberg, Munich, and Potsdam to explore the role of Foundation Models in advancing scientific research across diverse fields.

The workshop brought together leading researchers from academia and industry—including Microsoft Research, Meta, OpenAI, and top universities—to discuss both foundational AI development and domain-specific applications. Key themes included Large Language Models, Multimodal AI, benchmarking and evaluation challenges, ethical deployment, and cross-disciplinary collaboration.

The workshop emphasized intimate, interactive discussions to foster stronger interdisciplinary engagement beyond what larger conferences typically offer. It underscored the importance of community building and collaboration in guiding the ethical and impactful adoption of Foundation Models for scientific discovery.

[See descriptions of ELLIS-related contributions →](#)



Group photo from the Helmholtz-ELLIS Workshop on Foundation Models in Science, Berlin, March 18-19, 2025.

Local Science Exchange

ELLIS Sites Host Europe-Wide Pre-ICML and Pre-NeurIPS Fests

In 2025, the ELLIS network organised two annual Europe-wide research gatherings to strengthen local scientific exchange and collaboration ahead of two of the most important international Machine Learning conferences, ICML and NeurIPS. Both recurring initiatives followed a decentralised format in which individual ELLIS Sites hosted local events, creating a distributed yet connected European research showcase.

The ELLIS Pre-ICML Fest 2025, held from late June to mid-July, marked the first time this successful pre-conference format was extended to ICML. Seven ELLIS Sites across Europe hosted local poster sessions and research gatherings featuring accepted ICML papers and related high-quality work.

Participating Sites:

🇩🇪 Darmstadt · 🇩🇪 Freiburg · 🇨🇭 Lausanne · 🇬🇧 London · 🇩🇪 Munich · 🇩🇪 Institute Tübingen · 🇨🇭 Zurich

As an example, at ELLIS Unit Munich, the Fest was embedded in MCM's AI Day and brought together over 300 participants for research discussions spanning Machine Learning, applications, and societal perspectives. Additional contributions from the Institute Tübingen, and Units Zurich, Lausanne, London, Darmstadt, and Freiburg included keynote lectures and poster formats covering current Machine Learning research themes.



ELLIS Pre-ICML Fest at Unit Munich

The ELLIS Pre-NeurIPS Fest 2025, held from mid-November to December, continued the already established tradition within the network. It involved a record high of 20 participating Sites and covered a broad geographic area. The fest featured local research showcases and poster sessions centred on accepted NeurIPS papers. Many Sites also curated thematic programmes reflecting their specific research strengths, such as trustworthy AI, Multimodal Learning, or Deep Learning Theory.

Participating Sites:

🇪🇸 Barcelona · 🇩🇪 Berlin · 🇩🇪 Darmstadt · 🇬🇧 Edinburgh · 🇩🇪 Freiburg · 🇮🇹 Genoa ·
🇨🇭 Lausanne · 🇬🇧 London · 🇮🇹 Milan · 🇮🇹 Modena · 🇫🇷 Paris · 🇩🇪 Potsdam · 🇩🇪 Saarbrücken ·
🇮🇱 Tel Aviv · 🇮🇹 Trento · 🇩🇪 Institute Tübingen · 🇮🇹 Turin · 🇦🇹 Vienna · 🇵🇱 Warsaw · 🇨🇭 Zurich

Both Fests aim to provide a European platform for presenting cutting-edge research, fostering cross-site collaboration, and strengthening local scientific communities ahead of major global conferences. Their decentralised structure lowers participation barriers, promotes inclusivity, and enables early-stage feedback, particularly benefiting researchers who cannot attend the main conferences. Together, the initiatives show how ELLIS complements global conferences with strong regional ecosystems, enhancing collaboration, knowledge exchange, and the impact of European Machine Learning research.

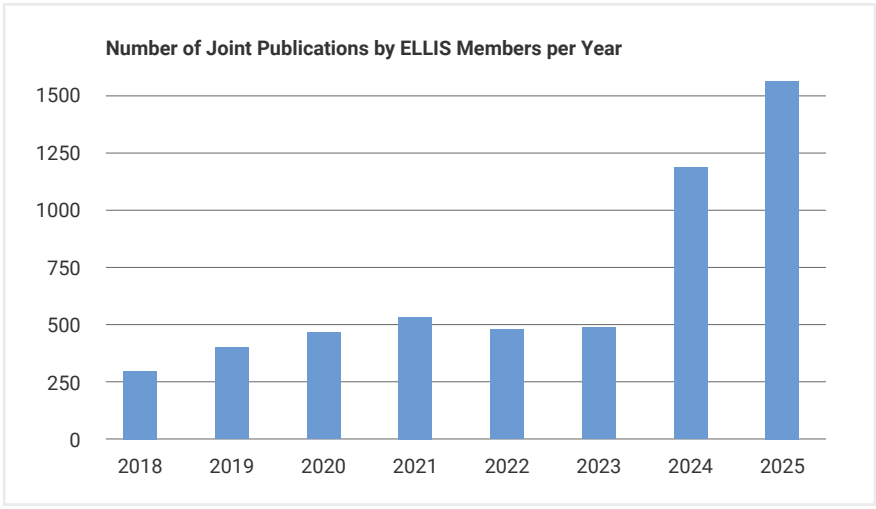
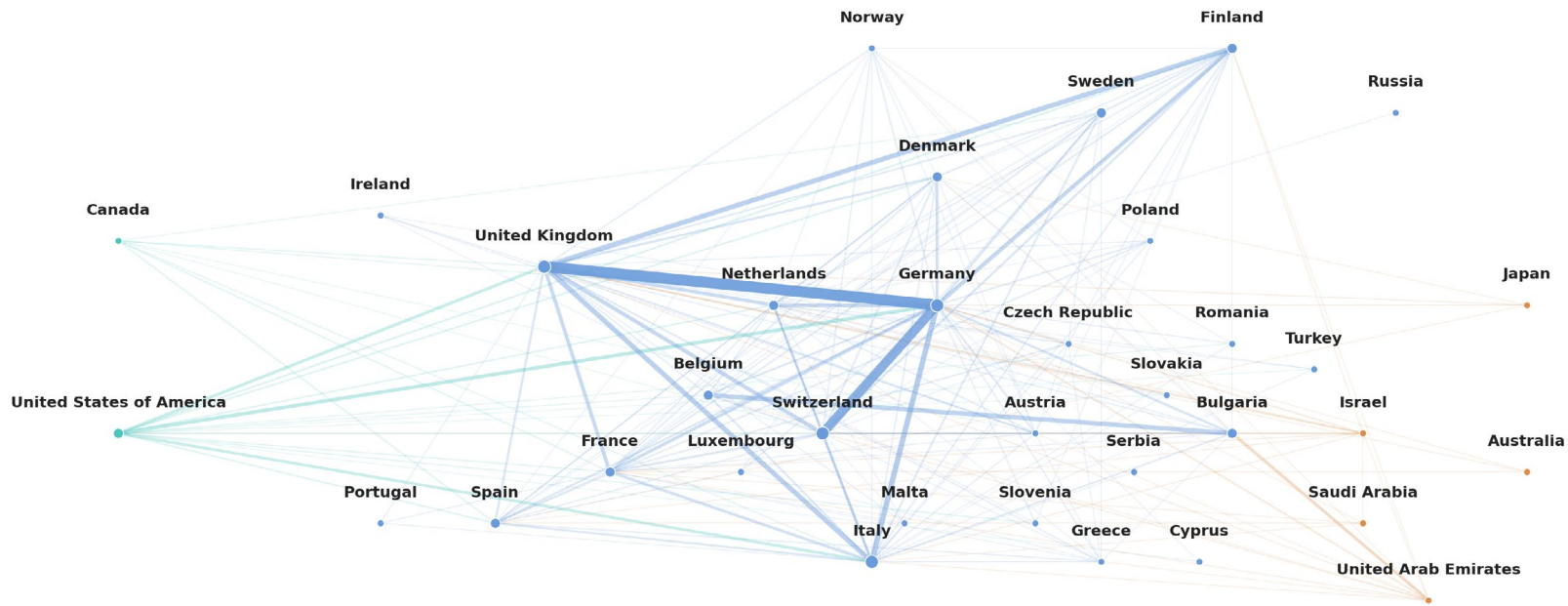
Scientific Output and Collaborative Research Activities

Joint Publication Output of the ELLIS Research Community

Co-authorship across ELLIS Members reflects the depth of scientific collaboration within the ELLIS network and serves as a measurable indicator of knowledge exchange and collective research output, offering insight into how actively the network functions as an integrated scientific community.

1,591 joint paper publications in 2025 involved two or more ELLIS Members from multiple countries, highlighting the network's extensive cross-border collaboration. Belgium and Bulgaria frequently collaborated on benchmarking challenges and image restoration, while the United Kingdom and Germany worked across Large Language Models, Optimisation, and Robotics. Germany also showed high joint activity with Switzerland in Neural Networks, Computer Vision, and Physical Reasoning, with Italy in Physics Experiments and AI research, and with Denmark on Social Simulation and Machine Unlearning. Other notable partnerships include the United Kingdom with France on Natural Language Processing and Vision-Language Models, and with Italy on Medical Image Segmentation and Representation Learning.

[Discover all cross-network publications →](#)



Data collected by Markus Flicke (PhD student at the Autonomous Vision Group in Tübingen, supervised by Andreas Geiger,) with approval of Andreas Geiger (University of Tübingen, ELLIS Fellow, Board Alumnus) using their tool Scholar Inbox. Data based on ELLIS membership records as of January 2026.

All data retrieved via exact name matching; homonyms may result in author conflation, while name variations or misspellings may lead to incomplete author coverage.

Data sourced exclusively from arXiv via Scholar Inbox; papers not uploaded to arXiv are absent from the database, with coverage estimated at approximately 80% of ELLIS collaborative output. Note that preprints are included and not all papers may have undergone peer review.

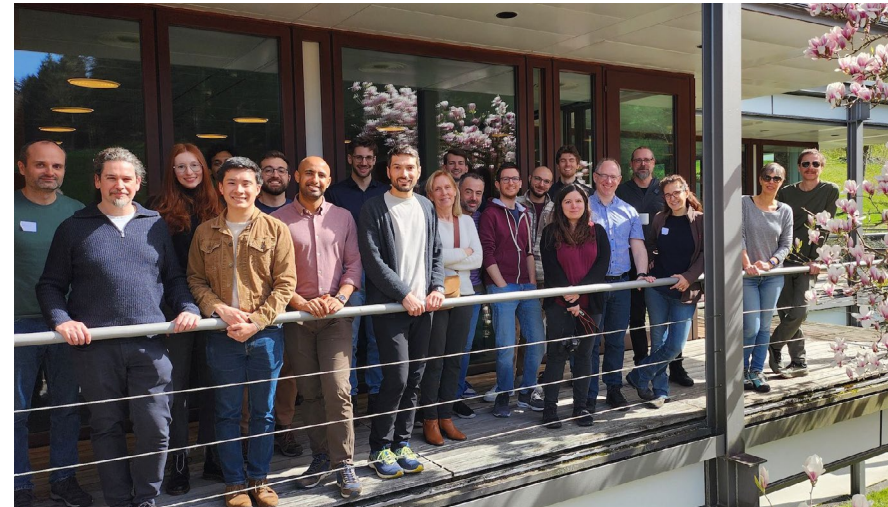
Above: Data visualisation by Zahra Sobhaninia, PhD student at the University of Copenhagen, Department of Computer Science.

Paper Highlight: Pan-European ELLIS Collaboration Leads to Influential NLP Publication

A pan-European research collaboration through the ELLIS network has produced an influential study on the use of Large Language Models (LLMs) for evaluating Natural Language Processing (NLP) outputs, accepted for presentation at ACL 2025, a leading NLP conference. The paper, titled “LLMs instead of Human Judges? A Large Scale Empirical Study across 20 NLP Evaluation Tasks,” was authored by 20 researchers from eleven European institutions, most of whom are affiliated with ELLIS. The first author was ELLIS PhD Student, Anna Bavaresco (University of Amsterdam, with exchange at KU Leuven). It introduces JUDGE-BENCH, a benchmark of 20 human-annotated evaluation datasets covering diverse NLP tasks and quality dimensions as well as comparing judgments from eleven open and proprietary LLMs against human evaluations.

This project originated from discussions at a 2024 ELLIS Program Natural Language Process workshop held at the Oberwolfach Research Institute for Mathematics, demonstrating the effectiveness of structured scientific exchange in fostering large-scale collaborative research.

[Read the paper and get all information on contributing authors and institutions →](#)



Above: The authors connected at the ELLIS Program NLP workshop held at the Oberwolfach Research Institute for Mathematics in 2024. *Below:* Poster presentation at ACL 2025, Vienna, Austria.



Contribution to the EuroLLM-22B Model

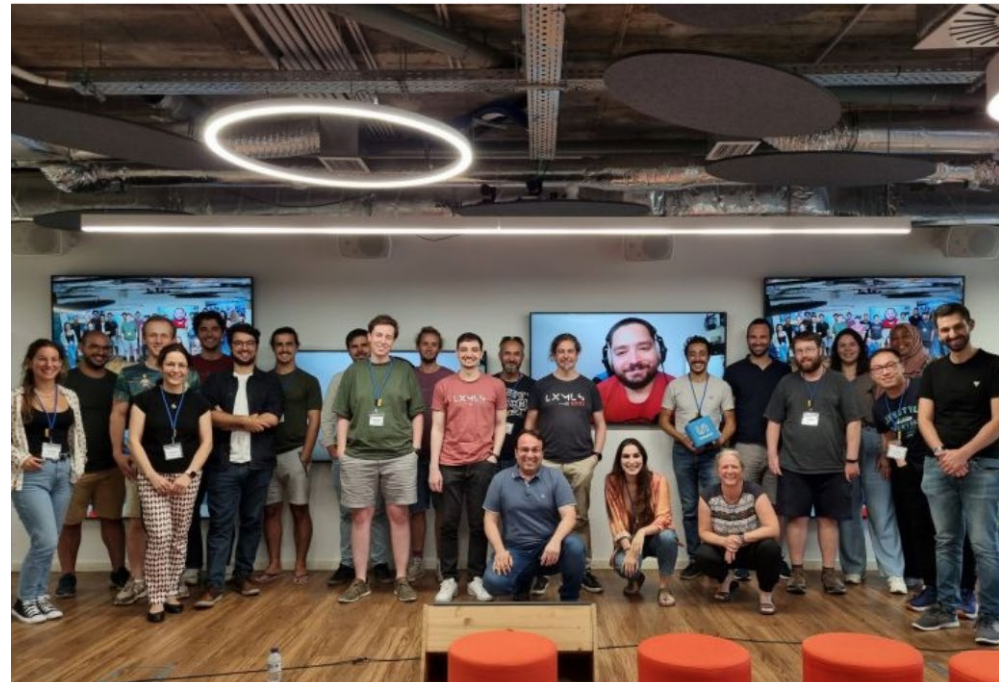
In December 2025, a major milestone for open European AI research was achieved with the release of EuroLLM-22B, a fully open Large Language Model with 22 billion parameters. The model was trained from scratch to support all 24 official languages of the European Union and was developed using European high-performance computing infrastructure, including MareNostrum 5 under the EuroHPC framework.

Several contributors to EuroLLM-22B are members of the ELLIS network, highlighting the role of ELLIS researchers in large-scale, collaborative AI initiatives. In particular, André Martins (ELLIS Fellow, Instituto Superior Técnico) from ELLIS Unit Lisbon was among the key researchers contributing across multiple stages of the model development pipeline.

The release of EuroLLM-22B demonstrates that state-of-the-art generative AI models can be developed openly within Europe, using European infrastructure and expertise. It provides a shared research asset for academia, industry, and public institutions, and illustrates the capacity of European research networks such as ELLIS to contribute to globally competitive, open AI systems.

[EuroLLM is available on Hugging Face →](#)

[Get more details on contributing authors and institutions →](#)



Research team behind EuroLLM-22B

Grants and Conference Publications Involving ELLIS Researchers

11 ELLIS Members Receive ERC Starting Grants

In 2025, the European Research Council (ERC) awarded 478 Starting Grants to outstanding early-career researchers across Europe under the Horizon Europe programme, representing a total investment of €761 million. These highly competitive grants support pioneering research across a wide range of disciplines, including the physical sciences and engineering, life sciences, social sciences, and humanities.

We are proud to report that eleven ELLIS Members and Scholars, representing five countries (Germany, Switzerland, Scotland, United Kingdom, and Finland), were among the successful awardees. This achievement highlights the excellence and international reach of the ELLIS community.

[See the list of 11 ELLIS Members →](#)



Contributions to ICLR, ICML, and NeurIPS

In 2025, ELLIS Members and PhD Students demonstrated a strong presence at three of the leading international conferences in Artificial Intelligence and Machine Learning: ICLR, ICML, and NeurIPS. ELLIS Members and PhD Students contributed prominently across all three venues, reflecting the depth and breadth of expertise within the network.

By highlighting these contributions, this section illustrates the significant role ELLIS researchers play in advancing top-tier AI research and shaping the future of the field. It also recognises their achievements and reinforces ELLIS's role in fostering collaboration and knowledge exchange within the European AI community.

[See all ELLIS conference contributions →](#)

ELLIS at NeurIPS 2025			
Total Conference Papers: 804 (12.9%)			
ELLIS Members	Papers: 764 Unique authors: 520 ELLIS Fellow & Scholar papers: 418 Oral presentations: 19 Spotlight papers: 102 Posters: 589	ELLIS PhD Students	Papers: 85 Unique authors: 56 Oral presentations: 2 Spotlight papers: 7 Posters: 76
ELLIS at ICML 2025			
Total Papers: 449			
ELLIS Members	ELLIS Fellow & Scholar papers: 145 Unique Member authors: 173 Oral presentations: 16 Spotlight papers: 42 Posters: 391	ELLIS PhD Students	Papers: 41 Spotlight papers: 4 Posters: 37
ELLIS at ICRL 2025			
Total Conference Papers: 520			
ELLIS Members	ELLIS Fellow & Scholar Authors: 167 Oral presentations: 39 Spotlight papers: 73 Posters: 408	ELLIS PhD Students	Papers: 59 Oral presentations: 7 Spotlight papers: 8 Posters: 44

Strategic Scientific Partnerships and Institutional Collaborations

In 2025, ELLIS continued to strengthen its international research ecosystem through targeted strategic partnerships. These collaborations are designed to expand interdisciplinary research, enhance doctoral and early-career training, and improve access to shared infrastructure and expertise. By working with leading scientific institutions, ELLIS accelerates the translation of AI research into real-world impact while reinforcing Europe's position as a global leader in Artificial Intelligence.

ELLIS – EMBL Strategic Collaboration

Established 2025

Activity focus: AI for life sciences and biomedicine

In January 2025, ELLIS signed a Memorandum of Understanding with the European Molecular Biology Laboratory (EMBL), marking the start of a new strategic collaboration at the intersection of Artificial Intelligence and Life Sciences.



This partnership enables joint scientific exchanges, the design of interdisciplinary research projects, and the development of shared training initiatives. A central goal of the collaboration is to strengthen data infrastructures and promote mobility between AI researchers and life-science experts, particularly for early-career scientists. Through this cooperation, ELLIS expanded its research reach into biomedical applications and fosters cross-disciplinary innovation.

ELLIS – Max Planck Artificial Intelligence Network

MP-AIX | Established 2025

Activity focus: Doctoral training and talent development



In September 2025, ELLIS became a strategic partner of the Max Planck Artificial Intelligence Network (MP-AIX), a new doctoral training initiative funded by the Max Planck Society.

This collaboration created new pathways for PhD candidates to receive joint supervision from ELLIS and Max Planck researchers. It also supports structured training through workshops, summer schools, internships, and networking activities. By linking top AI researchers across institutions, the partnership strengthens Europe's doctoral education pipeline and promoted interdisciplinary research in Machine Learning and Artificial Intelligence.

Continued Collaboration with RIKEN Center for Advanced Intelligence Project

Established 2019

Activity focus: International research exchange

Formally extended in late 2024, the partnership with RIKEN remained active throughout 2025. This collaboration continued to support international mobility, joint seminars, visiting researchers, and collaborative projects in intelligent systems.

The sustained cooperation with RIKEN strengthens ELLIS' global research connections and reinforces long-term knowledge exchange between Europe and Japan.



Members

1,942 Members in 2025

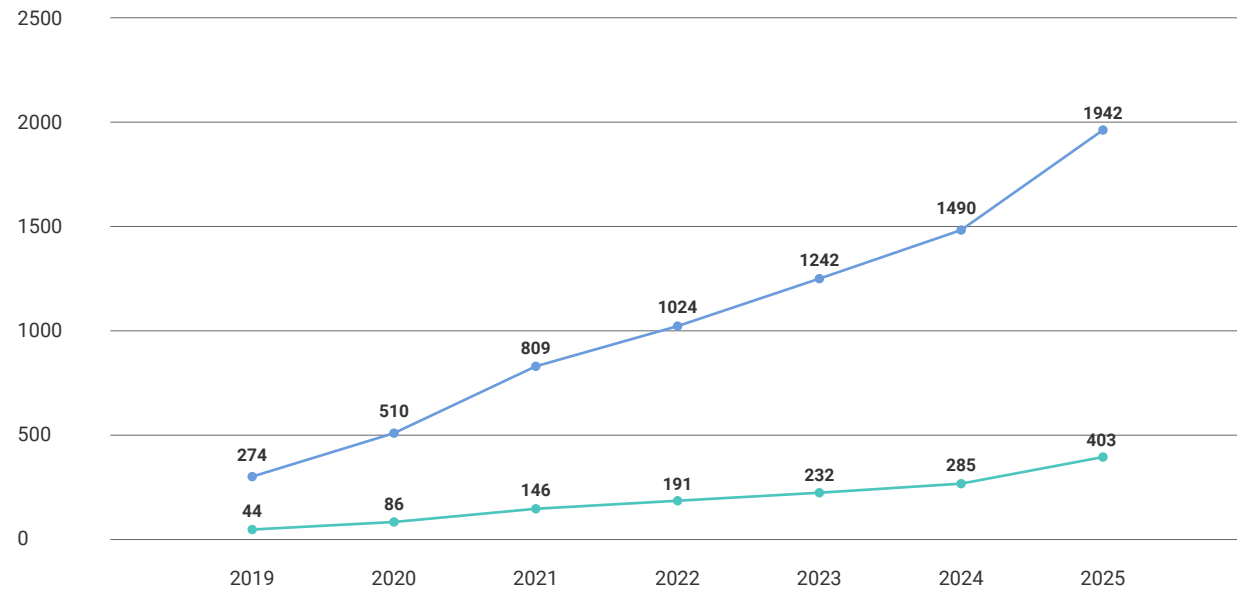
Membership to the ELLIS Society is open to researchers who have completed a PhD in a relevant AI/ML field, publish regularly in top-tier journals, and have a connection to Europe. In order to ensure ELLIS excellence criteria, each ELLIS Member requires endorsement by two existing members of the ELLIS Society who work in a different country than the candidate and do not have the same nationality as the candidate.

Since welcoming its first 274 members in 2019, the ELLIS Society has grown steadily, reaching 1,000 members in 2022 and approaching 2,000 by the end of 2025.



ELLIS Members 2019 - 2025

- Number of ELLIS Members
- Number of non-male Members

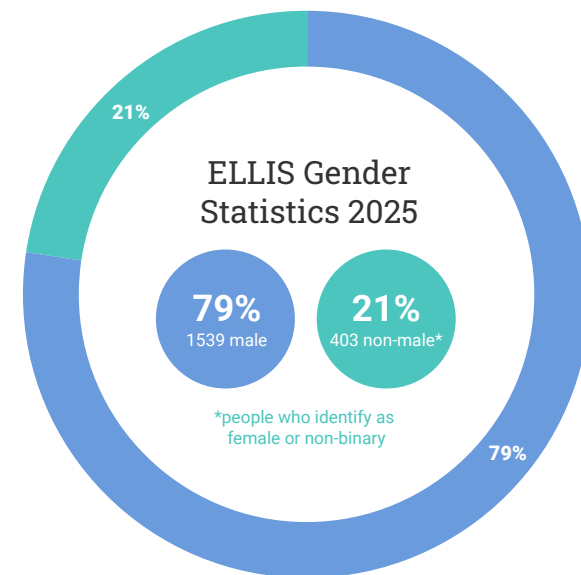


In 2025, the Society received about 50 membership applications per month and admitted 451 new members, with some applications under review into 2026. September and October saw a significant spike in applications (70 per month and >32% increase over average) coinciding with the final period of the Call for New Units, which ran from 20 May to 31 October 2025.

In 2025, the Society counted 1,942 members in total. Of these, 39.3% (763 members) are affiliated with an ELLIS Site (Unit or Institute), while 60.7% (1,179 members) are independent members.

The largest ELLIS Site by membership is the ELLIS Unit Paris with 42 members, followed by ELLIS Unit Amsterdam (41 members) and ELLIS Unit Lausanne (38 members).

In line with ELLIS's commitment to gender diversity, the share of non-male members has grown over time – from 16% in 2019 to 20.75% in 2025 – with ongoing efforts to increase this figure further.



Geographically, the largest share of ELLIS Members are based in Germany, followed by the United Kingdom, Italy, and France.

Number of Members per Country in 2025

 Germany: 387	 Ireland: 21
 UK: 337	 Norway: 19
 Italy: 172	 Hungary: 16
 France: 161	 Romania: 15
 Netherlands: 145	 Czech Rep.: 14
 Spain: 127	 Bulgaria: 8
 Switzerland: 113	 Slovenia: 8
 Finland: 86	 Ukraine: 5
 Sweden: 69	 Russia: 3
 Denmark: 51	 Serbia: 2
 Austria: 49	 Slovakia: 2
 Greece: 40	 Turkey: 2
 Israel: 37	 Estonia: 2
 Belgium: 26	 Luxembourg: 2
 Portugal: 26	 Bosnia and Herzegovina: 1
 Poland: 21	

Fellows & Scholars

ELLIS Members may be nominated to one of two roles, distinguished by seniority:

- ELLIS Fellows are outstanding senior researchers making significant scientific contributions who act as ambassadors for ELLIS, providing strategic leadership and helping shape the organisation's growth.
- ELLIS Scholars are promising researchers who are not yet at Fellow level but are on a clear trajectory towards it. The designation typically applies to Assistant Professors with up to 10 years of post-PhD experience and recognises both their outstanding work and their future potential.

Fellows and Scholars take on key responsibilities within the network. They contribute to the establishment of ELLIS Units and Institutes, initiate Research Programs, serve as Program Directors, and participate in the nomination and evaluation of new Fellows and Scholars.

2024 Fellows & Scholars Confirmed through Improved Selection Process

Nominations to become an ELLIS Fellow or Scholar are submitted by Unit and Program Directors. They are rigorously evaluated by the Fellows & Scholars Selection Committee through a structured process of expert peer review, scored against scientific excellence, societal impact, and relationship to ELLIS, before final decisions are validated by the full Committee and ELLIS Board.

For the 2024 call, appointing Fellows and Scholars who will begin their roles in 2025, ELLIS introduced significant improvements to the selection process and revised the evaluation criteria.

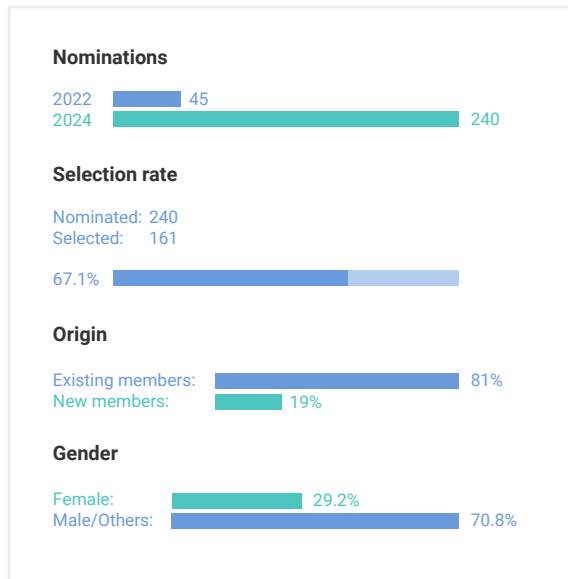
The process was further strengthened by introducing structured reviewer assignments, systematic conflict-of-interest checks, and a six-point scoring scale to improve consistency and transparency. Eligibility requirements were also extended to the Unit and Research Program level, with compliance on gender balance, research area documentation, and annual contributions becoming a precondition for accepting new nominations.

The 2024 call saw a significant increase in nominations, rising to 240 from ±45 in 2022, all of which were evaluated through a rigorous and comprehensive selection process. From these 240, 161 candidates were accepted as Fellows or Scholars (acceptance rate: 67.1%). The majority of Fellow and Scholar confirmations were awarded to existing members, while approximately 19% of those confirmed at these two levels were new to the network. Gender balance remained a structural challenge

Statistics from the 2025 Call for Nominations

(29.2% of accepted candidates identified as women). The overall number of Fellows and Scholars grew by approximately 39% compared to the December 2023 baseline of 413.

Newly accepted members within this call represent fields such as Computer Vision, Robotics, Natural Language Processing, and Bioinformatics. Several ELLIS Research Programs also experienced substantial growth. Geographically, the network welcomed members from Poland and Greece as ELLIS Fellows and Scholars for the first time.



One of the goals of 2025 was to improve the process to make it more robust and reliable given the increased number of nominations received and expected in future rounds of the call, which was [published as guidelines](#).

The [2025 Call for ELLIS Fellows and Scholars](#) was launched on 26 June 2025. It remained open until 30 September 2025 for the submission of nominations, with an additional deadline of 31 October 2025 for the finalisation of submissions.

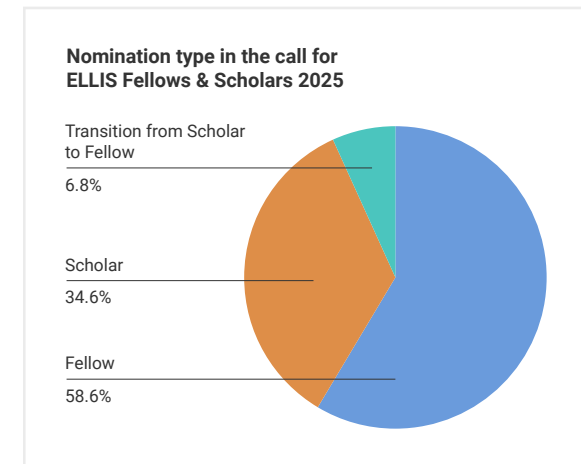
During the final months of 2025, significant effort was devoted to supporting ELLIS Unit Directors and Research Program Directors throughout the submission phase, as well as to start the work of establishing the new ELLIS Fellows Selection Committee. The evaluation phase of the 2025 call will take place in 2026, with results expected to be published thereafter.

While the 2024 call received 240 nominations, the 2025 call, launched on 26 June 2025, attracted 360 nominations, representing an increase of 50%. This increase was also due to the nominations received in the context of new ELLIS Units applications (see section on page), which require a minimum number of Fellows and Scholars.

This substantial rise signals both the growing visibility of the call for ELLIS Fellows and Scholars and the increasing recognition of ELLIS as a central reference point for the

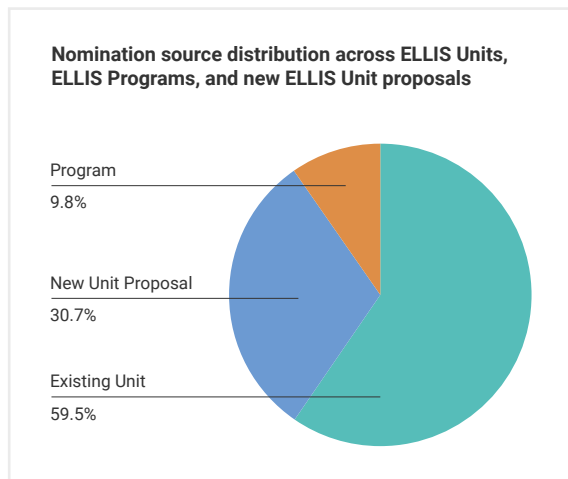
European AI research community. Of the 360 applications received prior to desk rejection, the gender distribution is predominantly male (71.8%), with women representing 27.9% of applicants and non-binary applicants accounting for 0.3%.

In terms of nomination type, the majority of applications correspond to ELLIS Fellows (58.6%), followed by ELLIS Scholars (34.6%), while a smaller share (6.8%) concerns candidates transitioning from Scholar to Fellow status.



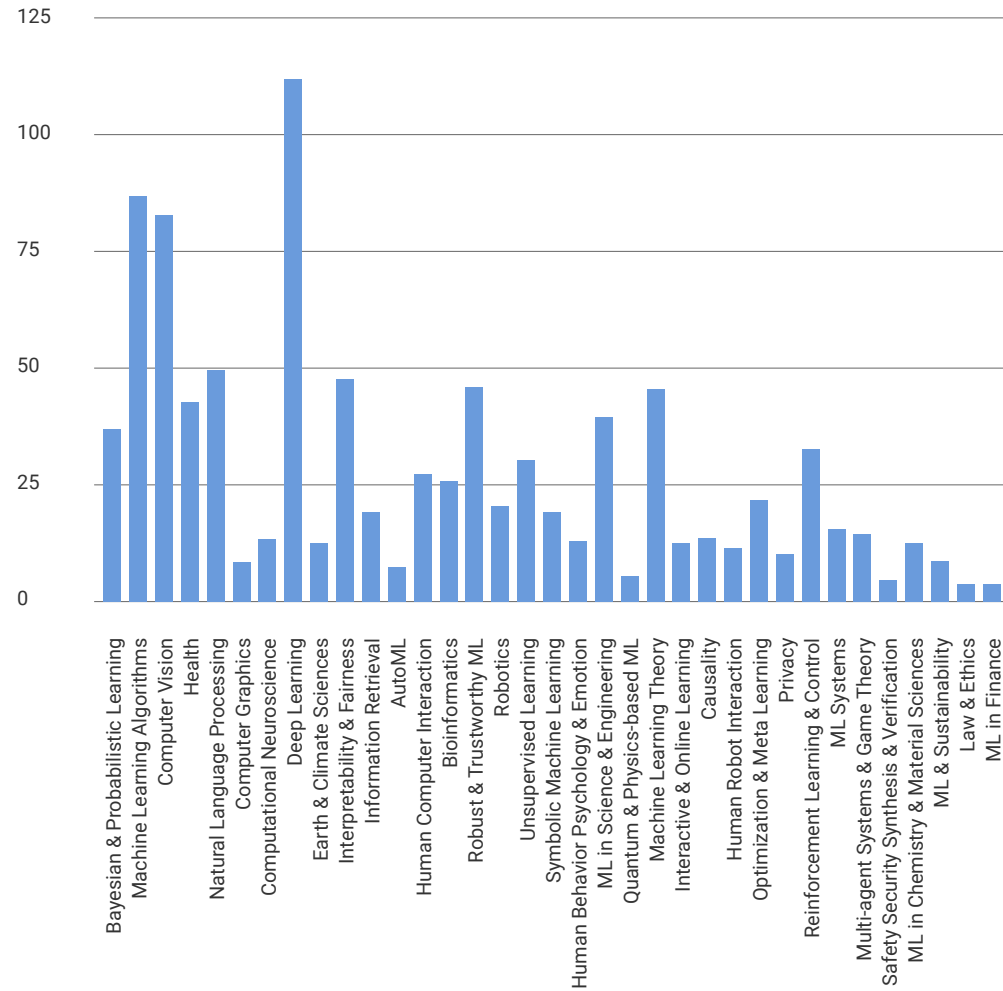
Regarding institutional origin, most nominations (59.5%) were submitted by existing ELLIS Units, while 9.8% originated from ELLIS Research Programs. Notably, nearly one third of the nominations (30.7%) were associated with proposals for new ELLIS Units, indicating sustained interest in expanding the network.

The most frequent countries of work among nominees were Germany, Belgium, Italy, France, the United Kingdom, the Netherlands, and Switzerland, reflecting a strong concentration of applications in countries with well-established AI research ecosystems.



Finally, the nominations predominantly fall within core Machine Learning research areas, with Computer Vision, Natural Language Processing, Deep Learning, and Machine Learning Algorithms emerging as the most represented fields.

Research Fields of Nominees



ELLIS PhD & Postdoc Program

The ELLIS PhD & Postdoc Program pairs outstanding students with leading researchers across Europe in Machine Learning, AI and related fields, and offers international exchanges, joint supervision, and a vibrant

research community. It focuses on excellence and fairness in research, fostering international collaboration, building strong ties with industries, and supporting its candidates through networking and training activities.

	Academic	Industry	Interdisciplinary
Partners	2 European academic institutions	1 European academic institution + 1 European company	2 European academic institutions with one advisor in Machine Learning and the other in an unrelated field
Location	Partners must be located in different countries in Europe	Partners can be located in the same European country and/or city	Partners can be located in the same European country, city, and/or university
Exchange	Minimum 6 months with the secondary advisor (can be split up into multiple visits)	Minimum 6 months with the secondary advisor (cumulative) + minimum 50% in academia	Time split between primary advisor (minimum 50%) and secondary advisor (minimum 6 months, cumulative)

All these Tracks are also open to a joint supervision between an ELLIS Fellow/Scholar residing in Europe and a CIFAR Fellow/Canadian AI chair holder in Canada.



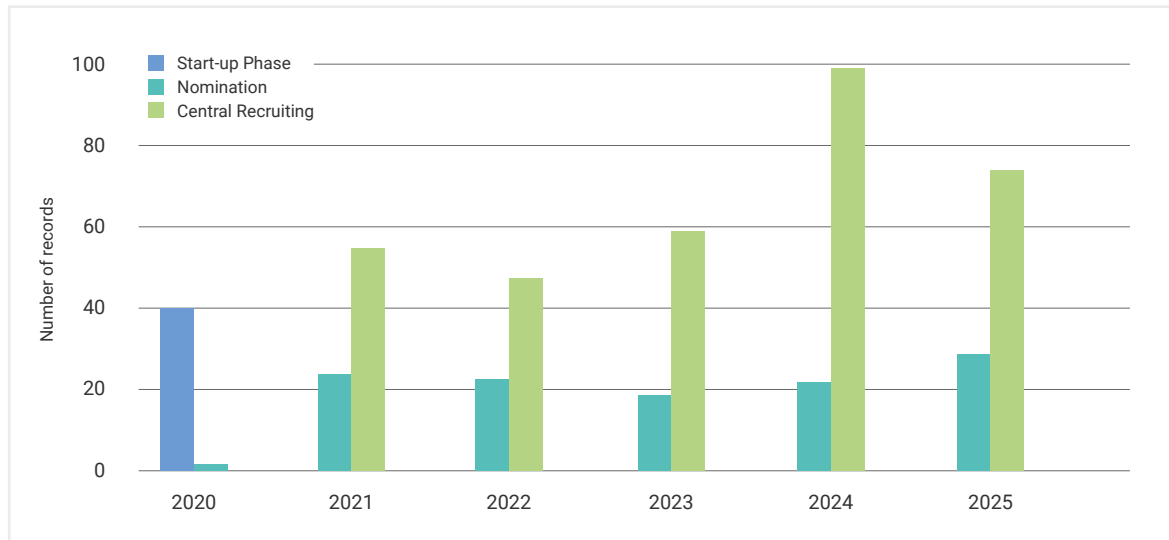
Excellence and Diversity in Research: Program Growth and Reach

Student applications and intake over time

There are two ways for an ELLIS Member to onboard excellent PhDs and Postdocs:

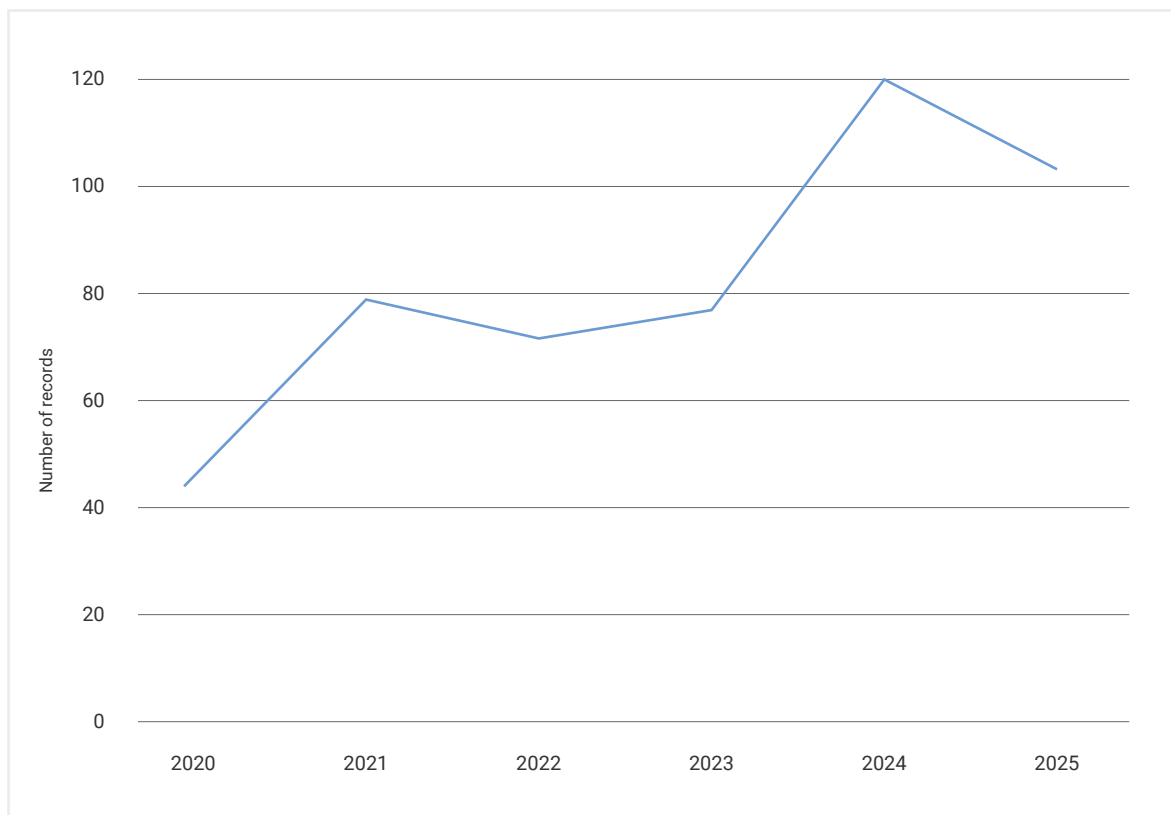
- The first is a year-round nomination process, where an ELLIS Member nominates and co-supervises a candidate who has already published a first-author paper in a top-rated venue.
- The second is an annual central recruitment call open to students looking to start a PhD, where applicants are evaluated on profile excellence alone and subsequently interviewed for personal fit with the advisor.

There has been a steady increase of PhD candidates every year, with a record intake of students in 2024. The Central Recruitment process is responsible for over 70% of the program's admissions, with an average of 70 students being onboarded each year; by contrast, the nomination process garners around 24 new recruits each cohort. The usual acceptance rate for the Central Recruitment is under 10%, emphasising the competitiveness of the program and academic excellence.



Intake over the years, according to the onboarding scheme; legend, from left to right: blue = Start-up Phase, light blue = Nomination, green = Central Recruiting. This includes candidates that have since then graduated.

In 2025, the program onboarded 103 PhD Students; 74 through the Central Recruitment (2024-2025 call) and 29 through the nomination pipeline. 10 students graduated and became ELLIS Alumni; overall, 58 students have now graduated from the program.



PhD intake from 2020 to 2025. This includes PhD candidates that have since then graduated



Current program statistics

The ELLIS PhD & Postdoc Program currently has 437 admitted candidates, spanning over 100 institutions across Europe, 1 in Israel, 2 in Canada, and involving almost 400 different advisors. Among accepted students, there are 431 PhD Students and 6 Postdocs.

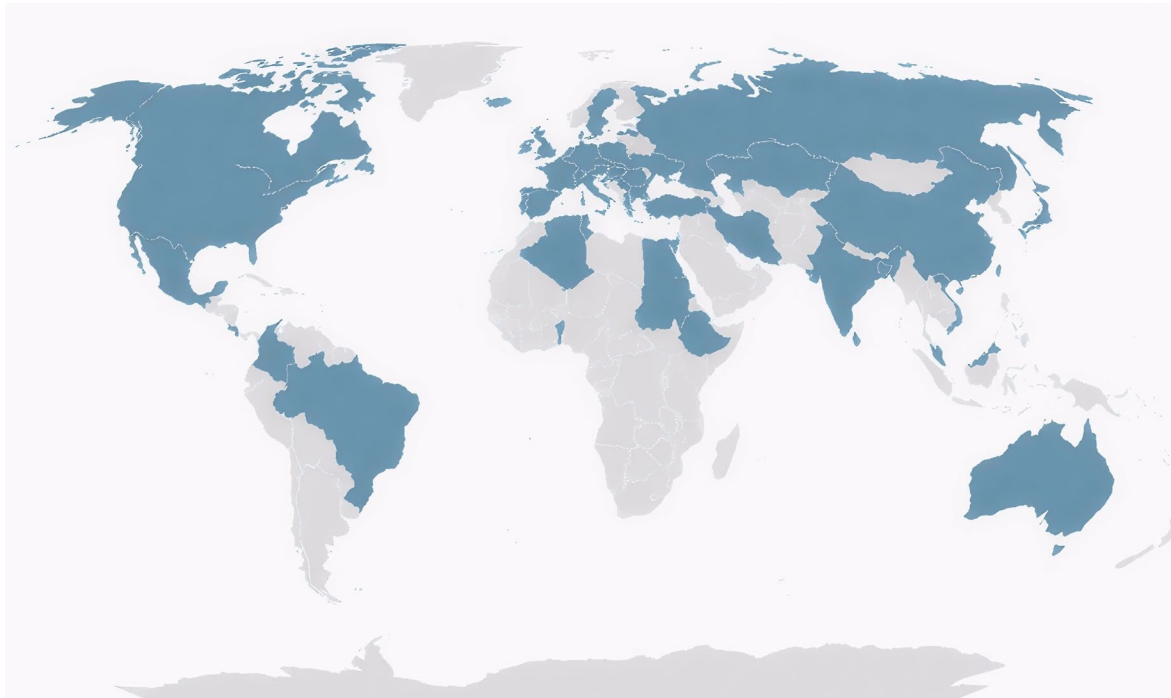
Tracks

84% of those admissions have joined the Academic Track, with the remaining 16% split between the Industry (13%) and Interdisciplinary Track (3%), reflecting the order in which each Track was implemented, from oldest to newest. However, this also demonstrates the strong inherent academic Machine Learning focus making the essence of the program. Five of the postdocs in the program have selected the Academic Track, with one in the Industry Track.

Nationalities

Nationality-wise, all currently admitted candidates come from 57 different countries across the globe. This distribution encompasses most of the main continents, though with a lack of representation in Africa (sparsely represented in the north), South-East Asia, part of South America and, to some extent, Northern Europe.

The most represented nationalities are a mix of European candidates with people from outside of Europe: Germany (20%), China (13%), India (10%), Italy (9%), Spain (5%), France (3%), Russia (3%), Poland (2.5%), Iran (2%), Turkey (2%). Germany stands out as the most represented country of origin by a significant margin – a gap that would ideally narrow in the future to allow for a more diverse admitted pool.



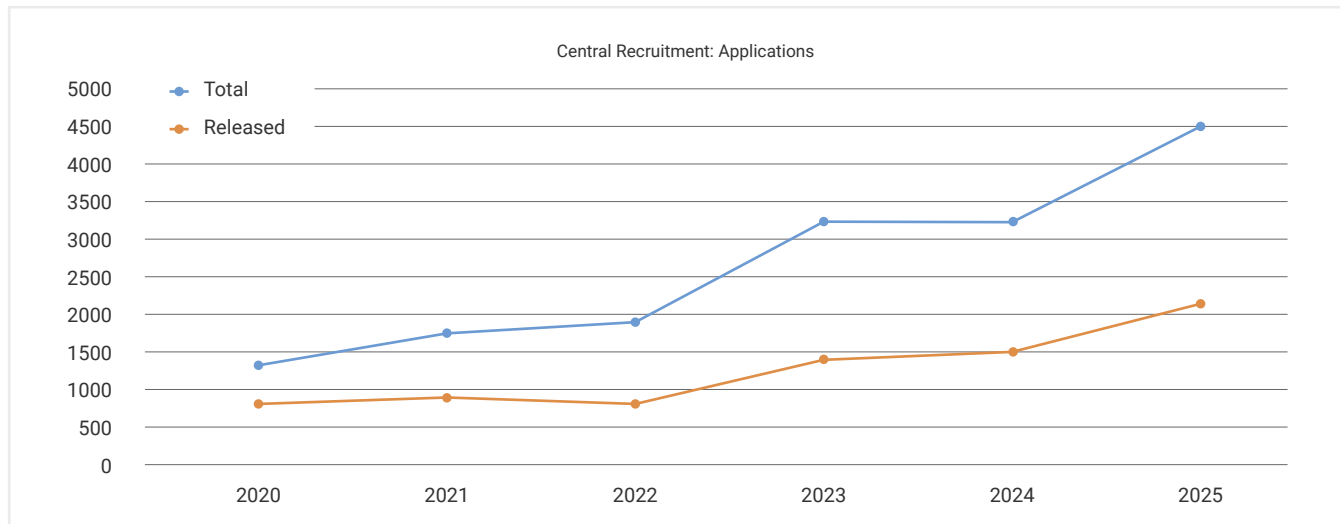
Gender balance

Out of the current 437 admitted candidates, 94 are women, bringing the gender ratio to 21.5% female candidates for 78.5% men. While more women have progressively been onboarded over the years, the gap between the men and women remains a concern.

Distribution of the currently admitted candidates' nationalities. Each area in blue corresponds to the country of origin of at least one PhD Student/Postdoc.

Call for Applications 2025-2026

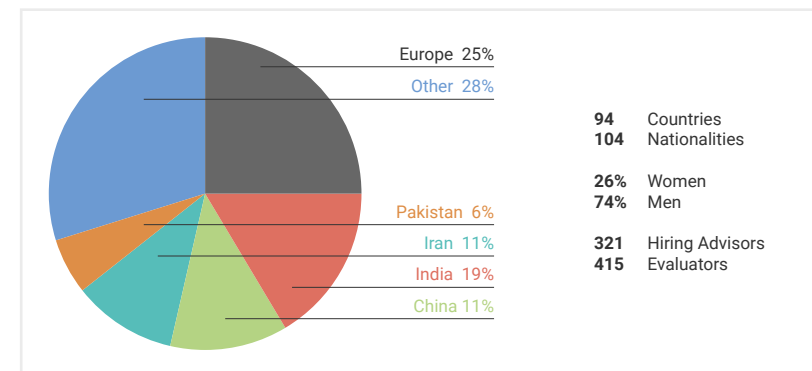
Interest in the program is clearly growing: in this year's call (2025–2026), around 4,500 registrations were received corresponding to an increase of 43% compared to 2024. By the deadline, approximately 2,111 full applications submitted – about half of all registrants.



Number of applications in the Central Recruitment since 2020. Blue= total number of applications started; orange= total number of applications completed and therefore eligible for review.

Following a thorough review process, 725 candidates were shortlisted (i.e., vetted for excellent profiles and eligible for interviews with the recruiting PIs); the number of selected students will be known by May 2026.

The applicant pool reflects a truly global community, spanning 94 countries and 104 nationalities. Europeans make up the largest share at 25%, followed by Indian (19%), Iranian (11%), Chinese (11%), and Pakistani (6%) candidates. Women represent 26% of applicants. Supporting this diverse cohort, 321 hiring advisors from across the ELLIS network volunteered their expertise, joined by 415 evaluators from 21 countries.

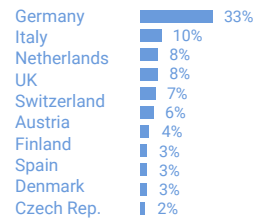


Fostering International Collaborations

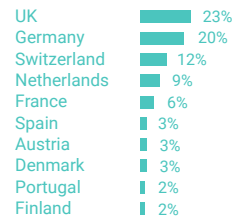
Primary and secondary affiliations

As stated previously, the ELLIS PhD & Postdoc Program is built on joint supervision and the international collaborations it produces.

Most prevalent countries (primary institutions):



Most prevalent countries (secondary institutions):



Partnerships

Additionally, since 2024 the ELLIS PhD & Postdoc Program has an understanding with the following organisations:



CIFAR, Canada, core machine-learning or interdisciplinary research



Max-Planck AI for Science, Germany, interdisciplinary research; partnership was established in 2025

Researchers that are both involved in ELLIS and in these initiatives can jointly hire or nominate a student for the ELLIS PhD & Postdoc Program, thus promoting international collaborations more effectively.



Events and Initiatives Supporting the Growth of PhD Candidates and Postdocs

Events

ELLIS Winter and Summer Schools

- Winter School – Unit Trento (27–31 Jan):
Multimodal Learning, Generative Models & Embodied AI | 100 attendees
- Winter School – Unit Amsterdam (18–21 Mar):
Foundation Models | 200 attendees
- Summer School – Unit Manchester (3–5 Jun):
Machine Learning for Healthcare & Biology | 120 attendees
- Summer School – Unit Lausanne (7–11 Jul):
Machine Learning & AI for Health | 70 attendees
- Summer School – Unit London (7–11 Jul):
Information Retrieval | 80 attendees
- Summer School – Unit Cambridge (14–18 Jul):
Probabilistic Machine Learning | 120 attendees
- Summer School – Unit Saarbrücken (4–8 Aug):
Trustworthy AI | 150 attendees
- Summer School – Unit Jena (1–5 Sep):
AI for Earth and Climate Sciences | 200 attendees

ELLIS Doctoral Symposium

The [fifth edition of the ELLIS Doctoral Symposium \(EDS\)](#) was hosted by ELLIS Unit Warsaw and took place from 25 to 29 August 2025, bringing together nearly 180 PhD Students, researchers, and industry representatives around the theme of Robust AI. The week-long program featured keynotes from leading ELLIS Fellows and Members – including top researchers such as Dario Floreano, Nuria Oliver, and Serge Belongie – alongside poster sessions, an industry fair, and panels covering topics ranging from Robotics to AI Ethics.

EDS 2026 will be held in Lisbon.



Group Photo from EDS 2025 in Warsaw

Seminars/Reading Groups

ELLIS Winter and Summer Schools

PhD Students and Postdocs in the ELLIS network can partake in a reading group organised by their peers; these consist of regular meetings where either a paper is discussed or a guest speaker presents their latest research. There are currently several ELLIS reading groups on different topics:

- **Computer Vision and Beyond**
(Oishi Deb - University of Oxford)
- **Human-Centric Machine Learning**
(Adrian Arnaiz - ELLIS Alicante, joint event with the ELLIOT network)
- **Mathematics & Efficiency of Deep Learning**
(Linara Adilova, TU Dortmund & Olga Saukh - TU Gratz)
- **ELLIS x UniReps Speaker Series**
(Marco Fumero - IST Austria)

ELLIS PhD Award

With the support of Kühborth Stiftung GmbH, ELLIS gives the PhD Award to outstanding European dissertations in the area of Artificial Intelligence and Machine Learning related fields (including Computer Vision and Robotics). Nominated dissertations are then reviewed by a committee for technical depth, the significance of the research contribution and the potential impact on theory and practice.

About the Kühborth Stiftung GmbH

Kühborth Stiftung GmbH is a foundation established by Dr. Dipl.-Ing. Wolfgang Kühborth and his wife Helga Kühborth to promote research and teaching in the fields of natural, technical and economic sciences. By sponsoring the ELLIS PhD Award, the Kühborth Stiftung aims to support advances in Artificial Intelligence, to promote academic excellence, and to propagate the European idea.

2025's PhD Award recognized four young scientists from universities in Tübingen, Lausanne, Zurich & Vienna:



Zhijing Jin

ELLIS PhD & Postdoc Program

Advisors: Bernhard Schölkopf (ELLIS Co-founder & Fellow, MPI-IS) • Mrinmaya

Sachan (ELLIS Fellow, ETH Zurich)

Dissertation: "Causality for Natural Language Processing"



Maksym Andriushchenko

EPFL

Advisors: Prof. Nicolas Flammarion (ELLIS Member, EPFL)

Dissertation: "Understanding Generalization and Robustness in Modern Deep Learning"



Siwei Zhang

ETH Zürich

Advisors: Professor Siyu Tang (ELLIS Scholar, ETH Zurich)

Dissertation: "Environment-aware 3D Human Motion Capture in Challenging Scenarios"



Elias Frantar

Institute of Science and Technology Austria (ISTA)

Advisors: Dan Alistarh (ELLIS Scholar, ISTA)

Dissertation: "Compressing Large Neural Networks: Algorithms, Systems and Scaling Laws"

[Read more about the 2025 PhD Awardees →](#)

[See all the recipients of the PhD Award since 2019 →](#)

Building Long-Term Collaborations with Industry

The critical and strategic link between universities and industry is one of the key focuses of the ELLIS PhD & Postdoc Program since its establishment. Such collaborations provide opportunities for the universities to bridge research and real-world problems, ensure talent pipeline and workforce readiness, provide access to data, infrastructure and compute, as well as to accelerate innovation and competitiveness.

There are three ways the program maintains strong and sustainable collaborations with (local) companies:

- Participation in the Industry Track through the co-supervision of a PhD Student with their primary advisor at an academic institution
- Sponsorships in the form of direct funding to sponsor PhD and Postdoc positions, mobility grants, or towards the program events like the yearly ELLIS Doctoral Symposium
- Organising the key networking activities of the program like keynote talks or panels at winter or summer schools, targeted workshops with expert speakers, or dedicated sprints or hackathons

Research Programs

Research Programs are designed to serve as platforms for scientific interaction and exchange, allowing researchers from similar fields to meet regularly to discuss recent advances in their field and work collaboratively towards impactful research. These interactions may potentially lead to joint projects, publications, grant applications and position papers.

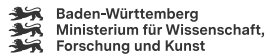
16 Research Programs

Each led by 2-3 directors

Directors  46

Members  265

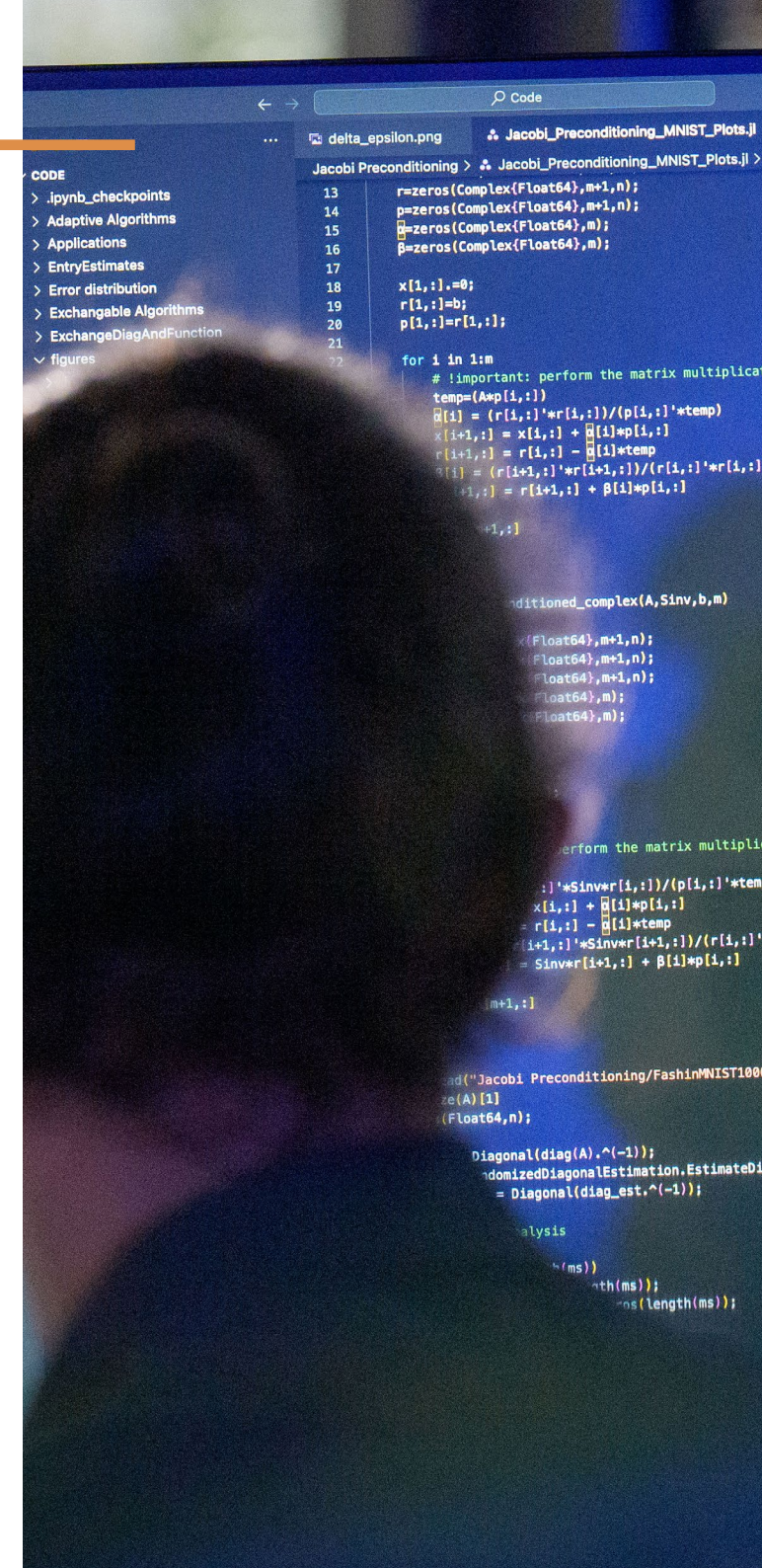
Throughout 2025, several workshops were organised with the financial support of the [Max Planck Institute for Intelligent Systems](#) and the [Ministry of Science, Research and the Arts of Baden-Württemberg](#).



Additionally, the Research Programs also play a significant role in the nomination process for Fellows and Scholars in 2025. In total, 35 nominations were submitted from 11 Programs. Notably, women accounted for 40% of

all nominations, reflecting continued efforts to promote diversity and inclusion across ELLIS Fellows and Scholars.

After five years of operation, a process to evolve the Research Programs was launched in September 2025, collecting structured feedback from Research Program Directors to evaluate effectiveness, relevance, and impact, and co-creating the path forward for the Programs' evolution.



Program Workshops

Workshop on “Overparametrization, Regularization, Identifiability and Uncertainty in Machine Learning”

27–31 January 2025 • Oberwolfach, Germany

This workshop, organised jointly with the ELLIS Research Program Theory, Algorithms and Computations of Modern Learning Systems, brought together early-career scientists for deep theoretical discussions on Overparametrization, Regularization, Identifiability, and Uncertainty in Machine Learning.

[See more workshop insights →](#)

Workshop on “3D Vision & Graphics”

20–21 March 2025 • Tübingen, Germany

This workshop brought together leading researchers to discuss the rapidly evolving capabilities of Image and Video Generative Models and their implications for 3D understanding.

[See more workshop insights →](#)

Workshop on “Machine Learning and Computer Vision”

1–4 April 2025 • Bad Teinach, Germany

This workshop brought together leading researchers, Postdocs, and students for in-depth discussions on the current state and future of Machine Learning and Computer Vision.

[See more workshop insights →](#)

Symposium on Mathematical Foundations of Trustworthy Learning

12–16 October 2025 • Ascona, Switzerland

This symposium featured leading researchers alongside contributed talks and a poster session to discuss the mathematical foundations of Trustworthy Learning.

UnConference Workshop on “AI for Earth and Climate Sciences”

2 December 2025 • Copenhagen, Denmark

This workshop brought together researchers from Computer Science, Earth System Science, and related fields to explore the potential of AI-driven methods for addressing pressing environmental challenges.

UnConference Workshop on “Interactive Learning and Interventional Representations”

2 December 2025 • Copenhagen, Denmark

This workshop brought together researchers to discuss topics in Reinforcement Learning and Causality, focusing on questions at the intersection of these two areas.

UnConference Workshop on “Generative Models, LLMs, and the Future of Molecular AI (ML4Molecules)”

2 December 2025 • Copenhagen, Denmark

This workshop provided ELLIS Members and collaborators with a forum to present their latest research, exchange insights, and coordinate efforts on Generative Models, Large Language Models, and the future of Molecular AI.



ELLIS Research Programs

ELLIS Health

Date Established: January 2019

Members: 12 from
Switzerland • UK • Germany •
Austria • France • Israel • Italy •
Belgium

Mission: To drive cutting-edge AI and Machine Learning research that revolutionises biomedicine and healthcare by leading innovation, connecting European experts, and training the next generation of AI health pioneers.



Gunnar Rätsch

Fellow • Program Director

ETH



Mihaela van der Schaar

Fellow • Program Director

Cambridge & AT1

UCLA



Oliver Stegle

Fellow • Program Director •
Unit Director • Board Member

DKFZ EMBL

ELLIS Robot Learning: Closing the Reality Gap

Date Established: January 2019

Members: 19 from
Austria • Germany • Slovenia •
UK • Sweden • Portugal • Spain

Mission: To close the reality gap for intelligent systems by investigating how robots should move, act, and interact, using Machine Learning to improve sensorimotor behaviour.



Aude Billard

Fellow • Program Director

EPFL



Jan Peters

Fellow • Program Director

TU Darmstadt

DFKI



Tamim Asfour

Fellow • Program Director

KIT

Geometric Deep Learning

Date Established: January 2019

Members: 13 from
Switzerland • Netherlands • UK •
Italy • Israel • Sweden

Mission: To establish geometric principles such as structure, symmetry, and invariance, as a foundational language for Deep Learning, to guide the principled design of next-generation AI systems.



Erik J. Bekkers

Scholar • Program Director

 UvA



Max Welling

Fellow • Program Director •


Board Alumni

 UvA



Michael Bronstein

Fellow • Program Director

 Oxford

Human-centric Machine Learning

Date Established: January 2019

Members: 14 from
UK • Spain • Italy • Spain •
Finland • Germany • France •
Switzerland • Sweden

Mission: To ensure AI Systems deliver widespread public benefit and acceptance by guaranteeing transparency, fairness, interpretability, accountability, and legal and technical verifiability of Algorithmic Decisions.



Adrian Weller

Fellow • Program Director

 Cambridge. & ATI



Nuria Oliver

Fellow • Program Director •

Board Vice President

 ELLIS Alicante



Plamen P. Angelov

Fellow • Program Director

 LU

Interactive Learning and Interventional Representations

Date Established: January 2019

Members: 19 from
Switzerland • Germany •
Italy • Austria • Spain • UK •
Netherlands • Israel

Mission: To rethink interactive models of learning by exploring Causal Modelling to bridge Observational and Interventional Learning, enabling reliable decision systems for high-stakes real-world applications.



Andreas Krause

Fellow • Program Director •

Unit Director


 ETH



Bernhard Schölkopf

Fellow • Program Director •

Unit Director • Board Alumni

 ELLIS Tübingen & MPI-IS
& TÜ.AI



Nicolò Cesa-Bianchi

Fellow • Program Director •

Unit Director • Board Member

 UNIMI

Learning for Graphics and Vision

Date Established: January 2023

Members: 9 from
France • Germany • UK • France •
Switzerland

Mission: To connect researchers across Machine Learning, Computer Graphics, 3D Vision, and Geometry Processing to investigate how these fields can mutually advance one another through deeper integration systems.



Edmond Boyer

Scholar • Program Director
🇫🇷 Inria



Gerard Pons-Moll

Fellow • Program Director
🇩🇪 Uni Tübingen



Lourdes Agapito

Fellow • Program Director
🇬🇧 UCL

Machine Learning and Computer Vision

Date Established: January 2019

Members: 20 from
France • Israel • Germany •
UK • Czechia • Denmark •
Bulgaria • Italy

Mission: To provide a forum for meaningful scientific exchange among leading European Computer Vision researchers, advancing both classical challenges and modern Machine Learning-driven approaches in the field.



Bernt Schiele

Fellow • Program Director •
Unit Director
🇩🇪 UdS & MPI-INF



Cordelia Schmid

Fellow • Program Director
🇫🇷 Inria



Yair Weiss

Fellow • Program Director
🇮🇱 HUJI

Machine Learning For Earth and Climate Sciences

Date Established: January 2019

Members: 14 from
Italy • Germany • Germany •
Spain • Switzerland • France

Mission: To model and understand the Earth system by combining machine learning with process understanding to enable forecasting, causal inference, anomaly detection, and hybrid physics-ML approaches for climate science.



Gustau Camps-Valls

Fellow • Program Director
🇮🇹 Uni Valencia



Markus Reichstein

Fellow • Program Director •
Unit Director
🇩🇪 MPI-BGC

Machine Learning for Molecule Discovery

Date Established: January 2023

Members: 12 from
Netherlands • Switzerland • UK •
Germany • Austria • Sweden

Mission: To accelerate molecular discovery using Machine Learning and AI, tackling global challenges such as disease and climate change through collaboration between AI and molecular science experts.



Francesca Grisoni

Scholar • Program Director
🇳🇱 TU/e



Miguel Hernández-Lobato

Fellow • Program Director •
Unit Director
🇬🇧 Cambridge



Nadine Schneider

Fellow • Program Director
🇨🇭 NIBR

Multimodal Learning Systems

Date Established: January 2021

Members: 25 from
Slovenia • Netherlands •
Italy • Germany • UK • Israel •
Switzerland • France • Spain •
Greece • Portugal

Mission: To advance foundational aspects of Multimodal Learning by disseminating and synthesising research, building bridges across unimodal communities, expanding applications of Multimodal Foundation Models.



Cees Snoek

Fellow • Program Director
🇳🇱 UvA



Nada Lavrač

Fellow • PD • Unit Director •
Board Alumni
🇨🇷 JSI



Nicu Sebe

Fellow • Program Director •
Unit Director
🇮🇹 UniTrento

Natural Intelligence

Date Established: January 2019

Members: 18 from
Switzerland • Germany • UK •
Netherlands • France

Mission: To advance the science of natural intelligence by studying how brains learn across tasks and domains, shifting from task-centric Machine Learning to agent-centric, exploring lifelong learning.



Mackenzie Mathis

Fellow • Program Director
🇨🇭 EPFL
🇺🇸 Harvard



Matthias Bethge

Fellow • Program Director •
Unit Director • Board Alumni
🇩🇪 UniTübingen & TÜ.AI



Peter Dayan

Fellow • Program Director •
Unit Director • Board Member
🇩🇪 MPI-KYB

Natural Language Processing

Date Established: January 2020

Members: 22 from
Portugal • Netherlands •
Germany • UK • Denmark • Israel
• Switzerland • Italy • Belgium

Mission: To facilitate collaboration across Europe's leading Natural Language Processing labs and connect NLP and Machine Learning communities as Large Language Models transform communication and reasoning.



André Martins

Fellow • Program Director
🇵🇹 ULisboa



Iryna Gurevych

Fellow • Program Director
🇩🇪 TU Darmstadt



Ivan Titov

Fellow • Program Director •
Unit Director
🇳🇱 UvA 🇬🇧 Edinburgh

Quantum and Physics Based Machine Learning

Date Established: January 2019

Members: 18 from
Netherlands • Italy • Germany •
Switzerland • France • Austria •
Spain • Luxembourg

Mission: To leverage concepts from Quantum and Statistical Physics to develop novel, energy-efficient Machine Learning algorithms and hardware implementations, to advance understanding of Quantum Information Processing.



Hilbert Johan Kappen

Fellow • Program Director
🇳🇱 Radboud Uni



Riccardo Zecchina

Fellow • Program Director
🇮🇹 Bocconi

Robust Machine Learning

Date Established: January 2019

Members: 16 from
UK • Finland • Germany •
Netherlands • Israel

Mission: To develop principles, methods, and verification techniques for Robust Machine Learning, with applications spanning health, environmental sciences, autonomous vehicles, and industrial control.



Chris Holmes

Fellow • Program Director
🇬🇧 Oxford & ATI



Samuel Kaski

Fellow • Program Director •
Board Member
🇫🇮 ELLIS Finland & Aalto
🇬🇧 UoM



Yee Whye Teh

Fellow • Program Director •
Unit Director
🇬🇧 Oxford & DeepMind

Semantic, Symbolic and Interpretable Machine Learning

Date Established: January 2020

Members: 14 from
Germany • Italy • UK • Israel •
Belgium

Mission: To advance Machine Learning approaches operating at the level of human abstraction by working with entities and relationships, using methods like Knowledge Graphs, Neuro-Symbolic and Inductive Logic Programming.



Kristian Kersting

Fellow • Program Director
🇩🇪 TU Darmstadt



Paolo Frasconi

Fellow • Program Director
🇮🇹 UNIFI



Volker Tresp

Fellow • Program Director
🇩🇪 LMU & Siemens

Theory, Algorithms and Computations of Modern Learning Systems

Date Established: January 2019

Members: 20 from
France • Germany • Italy •
Netherlands • Switzerland •
Finland • UK • Sweden • Portugal

Mission: To bridge the gap between empirical performance and theoretical understanding in AI by uniting Machine Learning experts to develop a holistic understanding of contemporary algorithms and architectures.



Francis Bach

Fellow • Program Director
🇫🇷 Inria & ENS



Lorenzo Rosasco

Fellow • Program Director •
Unit Director
🇮🇹 IIT & UniGe 🇺🇸 MIT



Philipp Hennig

Fellow • Program Director
🇩🇪 Uni Tübingen

ELLIS Sites

ELLIS is developing a pan-European network of research sites, comprising ELLIS Units and Institutes. ELLIS Members may affiliate with a Unit to become Unit Members, gaining access to its scientific activities and broader cross-Unit initiatives.

Each Site functions as a locally embedded research ecosystem, bringing together leading researchers from participating institutions to foster collaboration and knowledge exchange while also cultivating partnerships with industry.

ELLIS Units are research groups located at specific sites that bring together leading AI researchers, often across several local institutions. These Units are selected through a strict evaluation process to ensure very high scientific standards. Their main goal is to create excellent research environments - or ecosystems - and strengthen AI research locally while being part of the wider ELLIS network.

ELLIS Institutes, in contrast, are larger and more centralised research centres. They are independent centres that require strong, long-term support from national governments and are designed to compete directly with the world's top academic and industrial AI labs. The Institutes act as major hubs of AI excellence, attract top international talent, and promote close collaboration between academia and industry - while also being part of the wider ELLIS network.

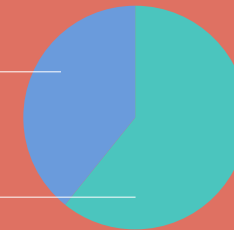
Sites Statistics

Sites 44

Units 41
 Assoc. Unit 1
 Institutes 2

Members
 of an ELLIS Site
 763

Members
 not part of a Site
 1179



Among a total of 1,942 members in 2025, 39.3% (763 members) were part of an ELLIS Site (Unit or Institute), while 60.7% (1,179 members) were not part of a Site. The largest ELLIS Site in 2025 by number of members was the ELLIS Unit Paris with 42 members, followed by ELLIS Unit Amsterdam (41 members) and ELLIS Unit Lausanne (38 members). A total of 100+ leading European institutions and universities participate in an ELLIS Site.

Call for New and Expanded ELLIS Units

In May 2025, ELLIS launched a call for proposals to establish or expand ELLIS Units across Europe, with submissions due by 31 October 2025 and evaluation results expected in 2026. Proposals are assessed by an international review committee against criteria spanning scientific excellence, research leadership, long-term institutional commitment, and integration into the broader ELLIS network, ensuring a rigorous and impartial selection process that uphold the network's standards of international competitiveness.



Unit Alicante

Date Established: May 2020

Members: 1

Research Focus:

- Computational Social Science
- Human-Centered AI
- Human-Computer Interaction (HCI)
- Conversational AI
- Trustworthy AI (Ethics, Fairness, Explainability, Safety)

Participating Institutions:

Fundación de la Comunitat Valenciana Unidad ELLIS Alicante

Unit Director:

Nuria Oliver

Fellow • Program Director • Unit Director •
Board Vice President
ELLIS Alicante Unit Foundation

Unit Coordinator:

Rebeca de Miguel

Unit Coordinator • Corporate Relations/Sponsorships
Committee
ELLIS Alicante Unit Foundation

2025 Highlights:

February: ELLIS Alicante hosts a [workshop with the visiting scientists from the Machine Learning Group \(MLG\) of the Université Libre de Bruxelles \(ULB\)](#)

April: [Miniworkshop: Mobile and Social Computing Lab](#) at Fondazione Bruno Kessler in Trento

September: [9th ELIAS Project Consortium Meeting](#)

[hosted by the ELLIS Alicante Unit](#)

Ongoing: [ELLIS-ELLIOT Reading Group: Human-Centric Machine Learning \(HCML\)](#)

2025 International Cross-Site Publications:

[Leveraging Small LLMs for Argument Mining in Education: Argument Component Identification, Classification, and Assessment](#). CMNA.

Authors: Lucile Favero, Juan Antonio Pérez-Ortiz, Tanja Käser (Unit Lausanne), Nuria Oliver (Unit Alicante)
[Beauty and the Bias: Exploring the Impact of Attractiveness on Multimodal Large Language Models](#). AIES.

Authors: Aditya Gulati, Moreno D'Inca, Nicu Sebe (Unit Trento), Bruno Lepri (Unit Trento), Nuria Oliver (Unit Alicante)

[FedDiverse: Tackling Data Heterogeneity in Federated Learning with Diversity-Driven Client Selection](#). FLTA.

Authors: Gergely D. Németh, Eros Fani, Yeat Jeng Ng, Barbara Caputo (Unit Turin), Miguel Ángel Lozano, Nuria Oliver (Unit Alicante), Novi Quadrianto

[The Disparate Benefits of Deep Ensembles](#). ICML.

Authors: Kajetan Schweighofer, Adrián Arnaiz Rodríguez, Sepp Hochreiter (Unit Linz), Nuria Oliver (Unit Alicante)

[Argument Mining in Education: Exploring the Potential of Open-source Small LLMs for Argument Classification and Assessment](#). AAAI Workshop on AI for Education.

Authors: Lucile Favero, Juan Antonio Pérez-Ortiz, Tanja Käser (Unit Lausanne), Nuria Oliver (Unit Alicante)

Unit Amsterdam

Date Established: January 2019

Members: 41

Research Focus:

- Computer Vision
- Information Retrieval
- ML for Health
- ML Foundations
- Natural Language Processing
- Socially Intelligent Artificial Systems (SIAS)
- Table Representation Learning

Participating Institutions:

University of Amsterdam

Unit Director:

Jan-Willem van de Meent

Member • Unit Director
University of Amsterdam

Unit Coordinator:

Adela Pranindiaty

Unit Coordinator • PhD Program Industry Coordinator
University of Amsterdam

2025 Highlights:

March: [ELLIS ELIAS Winter School on Foundation Models 2025](#), Amsterdam

May: [ELLIS MSc Meetup of ELLIS Units Amsterdam and Nijmegen](#), Amsterdam

October: [ELLIS Unit Coordinators Retreat](#), jointly organised by Units Amsterdam, Delft and Nijmegen

2025 International Cross-Site Publications:

[Hyperbolic Safety-Aware Vision-Language Models](#). ICCV.

Authors: Tobia Poppi, Tejaswi Kasarla, Pascal Mettes (Unit Amsterdam), Lorenzo Baraldi, Rita Cucchiara (Unit Modena)

[Language Agents Meet Causality - Bridging LLMs and Causal World Models](#) ICLR.

Authors: John Gkountouras, Matthias Lindemann, Phillip Lippe, Efstratios Gavves (Unit Amsterdam), Ivan Titov (Unit Edinburgh)

[The Sound of Water: Inferring Physical Properties from Pouring Liquids](#). ICASSP.

Authors: Piyush Bagad, Makarand Tapaswi, Cees G M Snoek (Unit Amsterdam), Andrew Zisserman (Unit Oxford)

[Are formal and functional linguistic mechanisms dissociated in language models?](#) Computational Linguistics.

Authors: Michael Hanna, Yonatan Belinkov (Unit Haifa), Sandro Pezzelle (Unit Amsterdam)

[LLMs instead of Human Judges? A Large Scale Empirical Study across 20 NLP Evaluation Tasks](#). ACL.

Authors: Anna Bavaresco, Raffaella Bernardi (Unit Trento), Leonardo Bertolazzi, Desmond Elliott (Unit Copenhagen), Raquel Fernández (Unit Amsterdam), Albert Gatt, Esam Ghaleb, Mario Giulianelli (Unit London), Michael Hanna, Alexander Koller (Unit Saarbrücken), Andre Martins (Unit Lisbon), Philipp Mondorf, Vera Neplenbroek, Sandro Pezzelle (Unit Amsterdam), Barbara Plank (Unit Munich), David Schlangen, Alessandro Suglia (Unit Edinburgh), Aditya K Surikuchi, Ece Takmaz, Alberto Testoni

Unit Barcelona

Date Established: April 2023

Members: 30

Participating Institutions:

Barcelona Supercomputing Center
Institut de Robòtica i Informàtica Industrial CSIC-UPC
Autonomous University of Barcelona
Pompeu Fabra University
Open University of Catalonia
Computer Vision Center
Artificial Intelligence Research Institute
BarcelonaTech
University of Barcelona

Unit Directors:

Dimosthenis Karatzas
Fellow • Unit Director
Autonomous University of Barcelona

Carme Torras
Fellow • Unit Director
Universitat Politècnica de Catalunya

Unit Coordinator:

Meritxell Bassolas
Unit Coordinator
Autonomous University of Barcelona

Unit Berlin

Date Established: September 2020

Members: 12

Research Focus:

- Explainable AI
- Scalable Machine Learning and Data Management
- Machine Learning for the Sciences (Physics, Chemistry, Medicine)
- Deep Learning
- Learning and Inference with Structure and Priors

Participating Institutions:

Technical University of Berlin
BIFOLD
Charité University Medicine Berlin
Fraunhofer HHI
Free University of Berlin

Unit Director:

Klaus-Robert Müller
Fellow • Unit Director
Technical University of Berlin

Unit Coordinator:

Andrea Gerdes
Unit Coordinator
Technical University of Berlin

2025 Highlights:

September: [GAIA 2025 Symposium - Geospatial AI and Applications with Foundation Models](#), Sofia, co-organised by Unit Sofia and Unit Berlin

November: Pre-NeurIPS Fest 2025, Berlin

2025 International Cross-Site Publications:

[Model Science: Getting serious about verification, explanation and control of AI systems](#). ECAI.

Authors: Przemyslaw Biecek (Unit Warsaw) and Wojciech Samek (Unit Berlin)

[ASIDE: Architectural Separation of Instructions and Data in Language Models](#). ICLR.

Authors: Egor Zverev, Evgenii Kortukov, Alexander Panfilov, Alexandra Volkova, Soroush Tabesh, Sebastian Lapuschkin, Wojciech Samek (Unit Berlin), Christoph H. Lampert (Unit Vienna)

[Crash testing machine learning force fields for molecules, materials, and interfaces: Molecular dynamics in the TEA challenge 2023](#). Chemical Science.

Authors: Igor Poltavsky, Anton Charkin-Gorbulin, Mirela Puleva, Grégory Fonseca, Ilyes Batatia, Nicholas J. Browning, Stefan Chmiela, Mengnan Cui, J. Thorben Frank, Stefan Heinen, Bing Huang, Silvan Käser, Adil Kabylda, Danish Khan, Carolin Müller, Alastair J. A. Price, Kai Riedmiller, Kai Töpfer, Tsz Wai Ko, Markus Meuwly, Matthias Rupp, Gábor Csányi (Unit Cambridge), Anatole von Lilienfeld, Johannes T. Margraf, Klaus-Robert Müller (Unit Berlin), Alexandre Tkatchenko

[Getting aligned on representational alignment](#).

Transactions on Machine Learning Research

Authors: Ilia Sucholutsky, Lukas Muttenthaler, Adrian Weller, Andi Peng, Andreea Bobu, Been Kim, Bradley C. Love, Christopher J. Cueva, Erin Grant, Iris Groen (Unit Amsterdam), Jascha Achterberg, Joshua B. Tenenbaum, Katherine M. Collins, Katherine L. Hermann, Kerem Oktar, Klaus Greff, Martin N. Hebart, Nathan Cloos, Nikolaus Kriegeskorte, Nori Jacoby, Qiuyi Zhang, Raja Marjeh, Robert Geirhos, Sherol Chen, Simon Kornblith, Sunayana

Rane, Talia Konkle, Thomas P. O'connell, Thomas Unterthiner, Andrew K. Lampinen, Klaus Robert Müller (Unit Berlin), Mariya Toneva (Unit Saarbrücken), Thomas L. Griffiths

Unit Cambridge

Date Established: April 2021

Members: 15

Research Focus:

- Probabilistic and Bayesian Machine Learning
- Natural Language Processing
- Healthcare
- Computer Systems
- Molecular Modelling

Participating Institutions:

University of Cambridge

Unit Directors:

Miguel Hernández-Lobato

Fellow • Program Director • Unit Director

University of Cambridge

Carl Edward Rasmussen

Fellow • Site Director

University of Cambridge

Unit Coordinator:

Sol Miah

Unit Coordinator

University of Cambridge

2025 Highlights:

July: [Cambridge Ellis Unit Summer School on Probabilistic Machine Learning](#), Cambridge

Unit Copenhagen

Date Established: November 2019

Members: 28

Research Focus:

- Machine Learning
- Computer Vision
- Health
- Earth and Climate Sciences
- Natural Language Processing
- Material Science

Participating Institutions:

University of Copenhagen

Technical University of Denmark

IT University of Copenhagen

Unit Director:

Ole Winther

Fellow • Unit Director

University of Copenhagen & DTU

Unit Coordinator:

Tine Nørgaard Aage

Unit Coordinator

University of Copenhagen

2025 Highlights:

November: [AI in Science Summit 2025](#), Copenhagen

2025 International Cross-Site Publications:

[Hyper-Transforming Latent Diffusion Models](#). ICML.

Authors: Ignacio Peis, Batuhan Koyuncu, Isabel Valera (Unit Saarbrücken), Jes Frellsen (Unit Copenhagen)

[CRAFT Your Dataset: Task-Specific Synthetic Dataset Generation Through Corpus Retrieval and Augmentation](#).
TACL.

Authors: Ingo Ziegler, Abdullatif Köksal, Desmond Elliott (Unit Copenhagen), Hinrich Schütze (Unit Munich)

Unit Darmstadt

Date Established: September 2020

Members: 13

Research Focus:

- Machine Learning
- Computer Vision
- Natural Language Processing
- Robot Learning
- Cognitive Science
- AI Database Systems
- Multimodal Grounded Learning
- Multimodal Reliable AI
- Photorealistic Image and Video Synthesis
- Image & Video Analysis

Participating Institutions:

Technical University of Darmstadt

Unit Director:

Stefan Roth

Fellow • Unit Director

Technical University of Darmstadt

Unit Coordinator:

Marcel Ackermann

Scientific Coordinator

Technical University of Darmstadt

2025 Highlights:

July: [ELLIS Pre-ICML Fest 2025](#), Darmstadt

December: [ELLIS Pre-Neurips Fest 2025](#), Darmstadt

2025 International Cross-Site Publications:

[Cultural Learning-Based Culture Adaptation of Language Models](#). ACL.

Authors: Chen Cecilia Liu, Anna Korhonen (Unit Cambridge), Iryna Gurevych (Unit Darmstadt)

[Boosting Omnidirectional Stereo Matching with a Pre-trained Depth Foundation Model](#). IROS.

Authors: Jannik Endres, Oliver Hahn, Charles Corbière, Simone Schaub-Meyer (Unit Darmstadt), Stefan Roth (Unit Darmstadt), Alexandre Alahi (Unit Lausanne)

[Scene-centric unsupervised panoptic segmentation](#).
CVPR, Highlight Paper.

Authors: Oliver Hahn, Christoph Reich, Nikita Araslanov, Daniel Cremers (Unit Munich), Christian Rupprecht (Unit Oxford), Stefan Roth (Unit Darmstadt)

[Culturally aware and adapted nlp: A taxonomy and a survey of the state of the art](#). ACL.

Authors: Chen Cecilia Liu, Iryna Gurevych (Unit Darmstadt), Anna Korhonen (Unit Cambridge)

[MathTutorBench: A Benchmark for Measuring](#)

[Open-ended Pedagogical Capabilities of LLM Tutors](#).

EMNLP.

Authors: Jakub Macina, Nico Daheim, Ido Hakimi, Manu Kapur, Iryna Gurevych (Unit Darmstadt), Mrinmaya Sachan (Unit Zurich)

Unit Delft

Date Established: November 2019

Members: 36

Research Focus:

- Bayesian, Probabilistic, Statistical and Causal Machine Learning
- Sequential Decision Making
- Verification and Safe and Responsible AI
- Multiagent Systems, Robust and Adversarial Machine Learning
- Deep Learning and Representation Learning
- Optimisation and Computational Techniques

Participating Institutions:

Delft University of Technology

Unit Director:

Frans A. Oliehoek

Fellow • Unit Director

Delft University of Technology

Unit Coordinator:

Taylor Stone

Unit Coordinator

Delft University of Technology

2025 Highlights:

6-8 October: [ELLIS Unit Coordinators Retreat](#), jointly organised by Units Amsterdam, Delft and Nijmegen

Ongoing: [Metascience for Machine Learning Workgroup](#)

Ongoing: [TU Delft Generative AI Workgroup](#)

Ongoing: [Machine Learning Insights Seminar Series](#) (monthly talks)

2025 International Cross-Site Publications:

[Overlapping Schwarz preconditioners for randomized neural networks with domain decomposition](#). CMAME.

Authors: Yong Shang, Alexander Heinlein (Unit Delft), Siddhartha Mishra (Unit Zurich), Fei Wang

[Tracking Network Dynamics using Probabilistic State-Space Models](#). IEEE.

Authors: Victor M. Tenorio; Elvin Isufi (Unit Delft); Geert Leus; Antonio G. Marques (Unit Madrid)

Unit Edinburgh

Date Established: September 2020

Members: 29

Research Focus:

- Natural Language Processing
- Machine Learning Foundations
- Neuro-symbolic AI
- Explainable, and Trustworthy AI
- Reinforcement Learning, Planning, and Decision Making
- Robot Learning and Embodied AI
- Multimodal Modelling

Participating Institutions:

University of Edinburgh
Heriot-Watt University

Unit Director:

Ivan Titov

Fellow • Program Director • Unit Director
University of Edinburgh

Unit Coordinator:

Sally Galloway

Unit Coordinator
University of Edinburgh

2025 International Cross-Site Publications:

[Is Complex Query Answering Really Complex?](#) ICML, Spotlight.

Authors: Cosimo Gregucci, Bo Xiong, Daniel Hernández, Lorenzo Loconte, Pasquale Minervini (Unit Edinburgh), Steffen Staab (Unit Stuttgart), Antonio Vergari (Unit Edinburgh)

[Joint Localization and Activation Editing for Low-Resource Fine-Tuning](#). ICML.

Authors: Wen Lai · Alexander Fraser (Unit Munich) · Ivan Titov (Unit Edinburgh)

[Aligning Generalisation Between Humans and Machines](#). Nature Machine Intelligence.

Authors: Filip Ilievski, Barbara Hammer, Frank van Harmelen, Benjamin Paassen, Sascha Saralajew, Ute Schmid, Michael Biehl, Marianna Bolognesi, Xin Luna Dong, Kiril Gashteovski, Pascal Hitzler, Giuseppe Marra, Pasquale Minervini (Unit Edinburgh), Martin Mundt, Axel-Cyrille Ngonga Ngomo, Alessandro Oltramari, Gabriella Pasi (Unit Milan), Zeynep G. Saribatur, Luciano Serafini, John

Shawe-Taylor (Unit London), Vered Shwartz, Gabriella Skitalinskaya, Clemens Stachl, Gido M. van de Ven, Thomas Villmann

[Language Agents Meet Causality - Bridging LLMs and Causal World Models](#). ICLR.

Authors: John Gkountouras, Matthias Lindemann, Phillip Lippe, Efstratios Gavves (Unit Amsterdam), Ivan Titov (Unit Edinburgh)

Institute Finland

Date Established: January 2025

Members: 9

Research Focus:

- Data-Efficient Probabilistic Machine Learning
- Generative Modelling
- Amortised Inference
- Interactive and Cooperative Machine Learning
- Transformative Multidisciplinary Collaboration

Participating Institutions:

Aalto University
Åbo Akademi University
Hanken School of Economics
LUT University
National Defence University
Tampere University
The University of the Arts Helsinki
University of Eastern Finland
University of Helsinki
University of Jyväskylä
University of Lapland

University of Oulu
University of Turku
University of Vaasa
VTT Technical Research Centre of Finland

The former ELLIS Unit Helsinki provided the foundation for the ELLIS Institute Finland, and its faculty and activities are now being integrated into the new ELLIS Institute Finland.

Institute Director:

Samuel Kaski

Fellow • Program Director • Institute Director •
Board Member
ELLIS Institute Finland
Aalto University
University of Manchester

Institute Coordinator:

Elina Pylvänäinen

Institute Coordinator
Aalto University

2025 Highlights:

November: [ELLIS Institute Finland inaugural Scientific Seminar](#), Espoo, Finland

2025 International Cross-Site Publications:

[From alexnet to transformers: Measuring the non-linearity of deep neural networks with affine optimal transport](#). CVPR.

Authors: Quentin Bouniot (Unit Paris), Ievgen Redko, Anton Mallasto, Charlotte Laclau, Oliver Struckmeier, Karol Arndt, Markus Heinonen, Ville Kyrki (ELLIS Institute Finland), Samuel Kaski (ELLIS Institute Finland)

[No Metric to Rule Them All: Toward Principled Evaluations of Graph-Learning Datasets](#). ICML.

Authors: Corinna Coupette (ELLIS Institute Finland), Jeremy Wayland, Emily Simons, Bastian Rieck (Unit Munich)
[Identifying latent state transitions in non-linear dynamical systems](#). ICLR.

Authors: Çağlar Hızlı, Çağatay Yıldız, Matthias Bethge (Unit Tübingen), ST John, Pekka Marttinen (ELLIS Institute Finland)

[DxHF: Providing High-Quality Human Feedback for LLM Alignment with Interactive Decomposition](#). UIST.

Authors: Danqing Shi, Furui Cheng, Tino Weinkauff, Antti Oulasvirta (ELLIS Institute Finland), Mennatallah El-Assady (Unit Zurich)

[DroneDiffusion: Robust Quadrotor Dynamics Learning with Diffusion Models](#). IEEE.

Authors: Avirup Das, Rishabh Dev Yadav, Sihao Sun, Mingfei Sun (Unit Manchester), Samuel Kaski (ELLIS Institute Finland), Wei Pan

 **Unit Freiburg**

Date Established: December 2019

Members: 3

Research Focus:

- Autonomous Learning
- Machine Learning
- Robotics
- Computer Vision
- Reasoning and AI Integration
- Deep Learning and Cross-Field Synergies

Participating Institutions:

University of Freiburg

Unit Director:

Frank Hutter

Fellow • Unit Director
University of Freiburg
ELLIS Institute Tübingen

Unit Coordinator:

Evelyn Rusdea

Unit Coordinator
University of Freiburg

2025 Highlights:

June: [AutoML School 2025](#), Tübingen, jointly organised by Unit Freiburg and ELLIS Institute Tübingen

2025 International Cross-Site Publications:

[Selective Rotary Position Embedding](#). ICLR.

Authors: Sajad Movahedi, Timur Carstensen, Arshia Afzal, Frank Hutter (ELLIS Institute Tübingen & Unit Freiburg), Antonio Orvieto (ELLIS Institute Tübingen), Volkan Cevher (Unit Lausanne)

[Unlocking In-Context Learning for Natural Datasets](#)

[Beyond Language Modelling](#). GCPR.

Authors: Jelena Bratulić, Sudhanshu Mittal, David T. Hoffmann, Samuel Böhm, Robin Tibor Schirrmeyer, Tonio Ball, Christian Rupprecht (Unit Oxford), Thomas Brox (Unit Freiburg)

[Efficient Learning of Object Placement With Intra-Category Transfer](#). IEEE. *Authors: Adrian Röfer, Russell Buchanan, Max Argus, Sethu Vijayakumar (Unit Edinburgh), Abhinav Valada (Unit Freiburg)*

Unit Genoa

Date Established: September 2020

Members: 18

Research Focus:

- Foundational Research in Machine Learning Theory and Algorithms
- Robotics
- Natural Intelligence
- Machine Learning for Health

Participating Institutions:

University of Genoa

Italian Institute of Technology

Unit Directors:

Lorenzo Rosasco

Fellow • Program Director • Unit Director

Massachusetts Institute of Technology

University of Genoa

Italian Institute of Technology

Massimiliano Pontil

Fellow • Unit Director

Italian Institute of Technology

University College London

Unit Coordinators:

Felicia Vigliotti

Unit Coordinator

Italian Institute of Technology

Giulia Casu

Unit Coordinator

University of Genoa

2025 Highlights:

June: PhD Course on [Theoretical Foundations of Machine Learning](#), Genoa

December: [ELLIS Pre-NeurIPS Fest 2025](#), Turin, jointly organised by Unit Turin & Unit Genoa

2025 International Cross-Site Publications:

[Linear quadratic control of nonlinear systems with Koopman operator learning and the Nyström method](#).

Automatica.

Authors: Edoardo Caldarelli, Antoine Chatalic, Adrià

Colomé, Cesare Molinari, Carlos Ocampo-Martinez, Carme Torras (Unit Barcelona), Lorenzo Rosasco (Unit Genoa)

[Hyperparameter optimization in machine learning](#). *FnTML*.

Authors: Luca Franceschi; Michele Donini; Valerio Perrone;

Aaron Klein (ELLIS Institute Tübingen); Cédric Archambeau

(Unit Berlin); Matthias Seeger; Massimiliano Pontil (Unit

Genoa); Paolo Frasconi

[Unlocking State-Tracking in Linear RNNs through Negative Eigenvalues](#). *ICLR*.

Authors: Riccardo Grazi, Julien Siems, Arber Zela, Jörg

K.H. Franke, Frank Hutter (Unit Freiburg), Massimiliano

Pontil (Unit Genoa)

[Schedule-Robust Continual Learning](#). *IEEE*.

Authors: Ruohan Wang, Marco Ciccone, Massimiliano

Pontil (Unit Genoa), Carlo Ciliberto (Unit London)

[Learning convolution operators on compact Abelian groups](#). *arXiv preprint*.

Authors: Emilia Magnani, Ernesto De Vito (Unit Genoa),

Philipp Hennig (Unit Tübingen), Lorenzo Rosasco (Unit

Genoa)

Unit Graz

Date Established: March 2023

Members: 9

Research Focus:

- Computer Vision
- Non-Smooth and Convex Optimisation
- Analysis of Learning Processes in the Brain through Theory and Large-Scale Models
- Bio-Inspired and Energy-Efficient Machine Learning
- Domain-Specialised Machine Learning and Trust
- Resource-Efficient Probabilistic Models for Intelligent Systems
- Probabilistic Machine Learning and Tractable Inference
- Recommender Systems and Behavioural Analytics

Participating Institutions:

Graz Center for Machine Learning

Graz University of Technology

Unit Director:

Wolfgang Maass

Fellow • Unit Director

Graz University of Technology

Unit Coordinator:

Randi Goertz

Unit Coordinator

Graz University of Technology

2025 Highlights:

December: [ELLIS Unconference Workshop “Energy-Efficient AI: Models, Algorithms, and Hardware for Sustainable Intelligence”](#), Copenhagen, co-organised by

Unit Nijmegen and Unit Graz

Ongoing: [ELLIS Reading Group on Mathematics & Efficiency of Deep Learning](#). Chairs: Linara Adilova (ELLIS Member at TU Darmstadt) & Olga Saukh (ELLIS Member, Unit Graz)

2025 International Cross-Site Publications:

[Selective Rotary Position Embedding](#). ICLR.

Authors: Sajad Movahedi, Timur Carstensen, Arshia Afzal, Frank Hutter (ELLIS Institute Tübingen & Unit Freiburg), Antonio Orvieto (ELLIS Institute Tübingen), Volkan Cevher (Unit Lausanne)

[Unlocking In-Context Learning for Natural Datasets](#)

[Beyond Language Modelling](#). GCPR.

Authors: Jelena Bratulić, Sudhanshu Mittal, David T. Hoffmann, Samuel Böhm, Robin Tibor Schirrmeyer, Tonio Ball, Christian Rupprecht (Unit Oxford), Thomas Brox (Unit Freiburg)

[Efficient Learning of Object Placement With Intra-Category Transfer](#) IEEE.

Authors: Adrian Röfer, Russell Buchanan, Max Argus, Sethu Vijayakumar (Unit Edinburgh), Abhinav Valada (Unit Freiburg)

 **Unit Haifa**

Members: 8

Unit Director:

Shie Mannor

Fellow • Unit Director

Technion - Israel Institute of Technology

 **Unit Heidelberg**

Date Established: September 2020

Members: 11

Research Focus:

- Unsupervised, Semi-Supervised, and Self-Supervised Learning
- Explainability and Uncertainty Quantification
- Privacy-Aware and Federated Learning
- Sparse Predictions from Dense Inputs
- Interpretable Low-Dimensional Representation Learning
- Representation of Scientific Knowledge
- Engagement of AI with the Natural World and the Natural Sciences
- Application of AI to Health Research and Life Sciences

Participating Institutions:

European Molecular Biology Laboratory

University of Heidelberg

German Cancer Research Center

Unit Director:

Oliver Stegle

Fellow • Program Director • Unit Director • Board Member

European Molecular Biology Laboratory

German Cancer Research Center

Unit Coordinator:

Daniela Beyer

Unit Coordinator

German Cancer Research Center

2025 Highlights:

March: [Helmholtz-ELLIS Workshop on Foundation Models in Science](#), Berlin, co-organised by ELLIS Units Heidelberg, Potsdam, and Munich

2025 International Cross-Site Publications:

[Automated Ensemble Multimodal Machine Learning for Healthcare](#). IEEE

Authors: Fergus Imrie; Stefan Denner; Lucas S. Brunschwig; Klaus Maier-Hein (Unit Heidelberg); Mihaela van der Schaar (Unit Cambridge)

[False Promises in Medical Imaging AI? Assessing Validity of Outperformance Claims](#). CVPR.

Authors: Evangelia Christodoulou, Annika Reinke, Pascaline André, Patrick Godau, Piotr Kalinowski, Rola Houhou, Selen Erkan, Carole H. Sudre, Ninon Burgos, Sofène Boutaj, Sophie Loizillon, Maëlys Solal, Veronika Cheplygina (Unit Copenhagen), Charles Heitz, Michal Kozubek, Michela Antonelli, Nicola Rieke, Antoine Gilson, Leon D. Mayer, Minu D. Tizabi, M. Jorge Cardoso, Amber Simpson, Annette Kopp-Schneider, Gaël Varoquaux (Unit Paris), Olivier Colliot, Lena Maier-Hein (Unit Heidelberg)

[Some Hidden Traps of Confidence Intervals in Medical Image Segmentation: Coverage Issues](#). Springer Nature

Switzerland.

Authors: Pascaline André, Charles Heitz, Evangelia Christodoulou, Annika Reinke, Carole H. Sudre, Michela Antonelli, M. Jorge Cardoso, Antoine Gilson, Sophie Tezenas du Montcel, Gaël Varoquaux (Unit Paris), Lena Maier-Hein (Unit Heidelberg) & Olivier Colliot

[FUTURE-AI: International consensus guideline for trustworthy and deployable artificial intelligence in healthcare](#). BMJ.

Authors: Karim Lekadir (Unit Barcelona), Alejandro F Frangi (Unit Manchester), Antonio R Porras, Ben Glocker, Celia Cintas, Curtis P Langlotz, Eva Weicken, Folkert W Asselbergs, Fred Prior, Gary S Collins, Georgios Kaissis, Gianna Tsakou, Irène Buvat, Jayashree Kalpathy-Cramer, John Mongan, Julia A Schnabel (Unit Munich), Kaisar Kushibar, Katrine Riklund, Kostas Marias, Lameck M Amugongo, Lauren A Fromont, Lena Maier-Hein (Unit Heidelberg), Leonor Cerdá-Alberich, Luis Martí-Bonmatí, M Jorge Cardoso, Maciej Bobowicz, Mahsa Shabani, Manolis Tsiknakis, Maria A Zuluaga, Marie-Christine Fritzsche, Marina Camacho, Marius George Linguraru, Markus Wenzel, Marleen De Bruijne, Martin G Tolsgaard, Melanie Goisauf, Mónica Cano Abadía, Nikolaos Papanikolaou, Noussair Lazrak, Oriol Pujol, Richard Osuala, Sandy Napel, Sara Colantonio, Smriti Joshi, Stefan Klein, Susanna Aussó, Wendy A Rogers, Zohaib Salahuddin, Martijn P A Starmans

Unit Jena

Date Established: November 2021

Members: 8

Research Focus:

- Machine Learning for Earth and Environmental Sciences
- Causal Inference and Hybrid Modelling
- Uncertainty Quantification and Interpretability
- Spatio-Temporal Modelling of Earth System Dynamics
- Integration of Domain Knowledge into AI Models
- AI for Sustainability and Climate Action

Participating Institutions:

Max Planck Institute for Biogeochemistry
Friedrich Schiller University Jena
German Aerospace Center

Unit Directors:

Joachim Denzler

Fellow • Unit Director
University of Jena

Markus Reichstein

Fellow • Unit Director
Max Planck Institute for Biogeochemistry

Unit Coordinator:

Conrad Philipp

Unit Coordinator • Coordinators' Coordinator •
Assistant Treasurer
Max Planck Institute for Biogeochemistry
Friedrich Schiller University Jena

2025 Highlights:

September: [ELLIS Summer School: AI for Earth and Climate Sciences](#), Jena

November: [Planet and Climate Workshop at AIS25](#) (Organiser), Copenhagen

Ongoing: [ELLIS AI for Good Webinar Series: From Molecules to Models](#) (Initiator), online

2025 International Cross-Site Publications:

[Artificial intelligence for modeling and understanding extreme weather and climate events](#). Nature Communications.

Authors: Gustau Camps-Valls, Miguel-Ángel Fernández-Torres, Kai-Hendrik Cohrs, Adrian Höhl, Andrea Castelletti,

Aytac Pacal, Claire Robin, Francesco Martinuzzi, Ioannis Papoutsis, Ioannis Prapas, Jorge Pérez-Aracil, Katja Weigel, Maria Gonzalez-Calabuig, Markus Reichstein (Unit Jena), Martin Rabel, Matteo Giuliani, Miguel D. Mahecha, Oana-Iuliana Popescu, Oscar J. Pellicer-Valero, Said Ouala, Sancho Salcedo-Sanz (Unit Madrid), Sebastian Sippel (Unit Jena), Spyros Kondylatos, Tamara Happé, Tristan Williams [Atmospheric transport modeling of CO₂ with neural networks](#). Journal of Advances in Modeling Earth Systems.

Authors: Vitus Benson, Ana Bastos, Christian Reimers, Alexander J. Winkler (Unit Jena), Fanny Yang (Unit Zurich), Markus Reichstein (Unit Jena)

[On the added value of sequential deep learning for the upscaling of evapotranspiration](#). Biogeosciences.

Authors: Basil Kraft, Jacob A. Nelson, Sophia Walther, Fabian Gans, Ulrich Weber, Gregory Duveiller, Markus Reichstein (Unit Jena), Weijie Zhang, Marc Rußwurm, Devis Tuia (Unit Lausanne), Marco Körner, Zayd Hamdi, Martin Jung

[Maximum Risk Minimization with Random Forests](#). arXiv.

Authors: Francesco Freni, Anya Fries, Linus Kühne, Markus Reichstein (Unit Jena), Jonas Peters (Unit Zurich)

Unit Lausanne

Date Established: September 2020

Members: 38

Research Focus:

- Fundamentals of AI
- State-of-the-Art Methods and Algorithms

- Novel Applications in Strategic Domains: Leveraging AI in Sustainability, Health, Science, Robotics, Responsible AI, and Education

Participating Institution:

EPFL AI Center at Swiss Federal Technology Institute of Lausanne

Unit Director:

Pascal Frossard

Fellow • Unit Director

Swiss Federal Technology Institute of Lausanne

Unit Coordinator:

Nicolas Machado

Unit Coordinator

Swiss Federal Technology Institute of Lausanne

2025 Highlights:

July: [ELLIS Unit Lausanne: AI for Health Summer School](#), Lausanne

2025 International Cross-Site Publications:

[Robustness in Both Domains: CLIP Needs a Robust Text Encoder](#). NeurIPS.

Authors: *Elias Abad Rocamora, Christian Schlarmann, Naman Deep Singh, Yongtao Wu, Matthias Hein (Unit Tübingen), Volkan Cevher (Unit Lausanne)*

[Asymptotics of SGD in sequence-single index models and single-layer attention networks](#). NeurIPS.

Authors: *Luca Arnaboldi, Bruno Loureiro (Unit Paris), Ludovic Stephan, Florent Krzakala (Unit Lausanne), Lenka Zdeborova (Unit Lausanne)*

[Os-harm: A benchmark for measuring safety of computer use agents](#). arXiv preprint.

Authors: *Thomas Kuntz, Agatha Duzan, Hao Zhao, Francesco Croce (ELLIS Institute Finland), Zico Kolter, Nicolas Flammarion (Unit Lausanne), Maksym Andriushchenko (ELLIS Institute Tübingen)*

 **Unit Leuven**

Date Established: January 2020

Members: 7

Research Focus:

- Machine Learning Foundations
- Computer Vision and NLP
- Biomedical Applications
- Machine Learning Hardware and Efficiency

Participating Institutions:

KU Leuven
VIB.AI

Unit Director:

Matthew Blaschko

Fellow • Unit Director

KU Leuven

Unit Coordinator:

Jens Bürger

Unit Coordinator

KU Leuven

2025 International Cross-Site Publications:

[Differentiable simulation enables large-scale training of detailed biophysical models of neural dynamics](#). Nature Methods.

Authors: *Michael Deistler, Kyra L. Kadhim, Matthijs Pals, Jonas Beck, Ziwei Huang, Manuel Gloeckler, Janne K. Lappalainen, Cornelius Schröder, Philipp Berens (Unit Tübingen), Pedro J. Gonçalves (Unit Leuven), Jakob H. Macke (Unit Tübingen)*

[Accelerating Spectral Clustering under Fairness Constraints](#). ICML.

Authors: *Francesco Tonin, Alex Lambert, Johan A. K. Suykens (Unit Leuven), Volkan Cevher (Unit Lausanne)*

 **Unit Linz**

Date Established: January 2019

Members: 5

Research Focus:

- Advanced Theories, Algorithms, and Applications of Machine Learning

Participating Institution:

Johannes Kepler University Linz

Unit Director:

Sepp Hochreiter

Fellow • Unit Director • Board Alumni

Johannes Kepler University Linz

Unit Coordinator:

Yvonne Hauser

Unit Coordinator

Johannes Kepler University Linz

2025 International Cross-Site Publications:

[ImageSet2Text: Describing Sets of Images through Text.](#)

arXiv preprint.

Authors: *Piera Riccio (Unit Amsterdam), Francesco Galati, Kajetan Schweighofer (Unit Linz), Noa Garcia (Unit Alicante), Nuria Oliver (Unit Alicante)*

Unit Lisbon

Date Established: May 2020

Members: 22

Research Focus:

- Natural Language Processing
- Machine Learning Foundations
- Reinforcement Learning and Robotics
- Computer Vision and Embodied Cognition
- Health Applications
- Infrastructure
- Bioinformatics and Computational Biology

Participating Institutions:

INESC-ID

Institute for Systems and Robotics

Instituto de Telecomunicações

Instituto Superior Técnico

Unit Director:

Mário A. T. Figueiredo

Fellow • Unit Director

Instituto Superior Técnico

Unit Coordinator:

Ana Saraiva Ayash

Programs Coordinator • Unit Coordinator

Instituto Superior Técnico & ELLIS Society

2025 Highlights:

July: [Machine Learning Summer School](#), Lisbon

October: [ELLIS Unit Lisbon PhD and Postdoc Symposium](#), Lisbon

2025 International Cross-Site Publications:

[Formalizing Test-Time Compute for Function-Level Code Generation.](#) IJCNLP.

Authors: *Haau-Sing Li, Patrick Fernandes, Iryna Gurevych (Unit Darmstadt), Andre Martins (Unit Lisbon)*

[LLMs instead of Human Judges? A Large Scale Empirical Study across 20 NLP Evaluation Tasks.](#) ACL.

Authors: *Anna Bavaresco, Raffaella Bernardi (Unit Trento), Leonardo Bertolazzi, Desmond Elliott (Unit Copenhagen), Raquel Fernández (Unit Amsterdam), Albert Gatt, Esam Ghaleb, Mario Giulianelli (Unit London), Michael Hanna, Alexander Koller (Unit Saarbrücken), Andre Martins (Unit Lisbon), Philipp Mondorf, Vera Neplenbroek, Sandro Pezzelle (Unit Amsterdam), Barbara Plank (Unit Munich), David Schlangen, Alessandro Suglia (Unit Edinburgh), Aditya K Surikuchi, Ece Takmaz, Alberto Testoni*
[Discrete Latent Structure in Neural Networks.](#) FTSP.

Authors: *Vlad Niculae (Unit Amsterdam); Caio Corro; Nikita Nangia; Tsvetomila Mihaylova; André F. T. Martins (Unit Lisbon)*

[Formal and scalable multi-robot coordination methods for long horizon tasks with time uncertainty.](#) RAS.

Authors: *Carlos Azevedo, Pedro U. Lima (Unit Lisbon),*

Bruno Lacerda, Nick Hawes (Unit Oxford)

[The Effect of Agent-based Feedback on Prosociality in Social Dilemmas.](#) AAMAS.

Authors: *Jennifer Renoux, Filipa Correia, Joana Campos, Lucas Morillo-Mendez, Neziha Akalin, Fernando P. Santos (Unit Amsterdam), Ana Paiva (Unit Lisbon)*

Unit London

Date Established: September 2020

Members: 28

Research Focus:

- Probabilistic Machine Learning
- Causality
- Learning Theory
- Mathematics of Deep Learning
- Robustness in Machine Learning
- Information Theory
- Simulation-based Inference
- Natural Language Processing
- Physics-informed Machine Learning
- Computational Statistics
- Computational Neuroscience
- Generative Models
- Bayesian Statistics

Participating Institution:

University College London

Unit Directors:

François-Xavier Briol

Scholar • Unit Director
University College London

Benjamin Guedj

Fellow • Unit Director
National Institute for Research in Digital Science and
Technology, University College London

Arthur Gretton

Fellow • Unit Director
University College London

2025 Highlights:

May: [Workshop on Advances in Post-Bayesian Method](#),
London

July: [ELLIS ESSIR 2025 - 16th European Summer School
on Information Retrieval](#), Wolverhampton

July: [ELLIS Pre-ICML @London](#), London

December: [ELLIS Pre-NeurIPS Fest 2025](#), London

2025 International Cross-Site Publications:

[Cost-aware simulation-based inference](#). AISTATS.
Authors: Ayush Bharti, Daolang Huang, Samuel Kaski (Unit
Helsinki & ELLIS Institute Finland), François-Xavier Briol
(Unit London)

[Kernel quantile embeddings and associated probability
metrics](#). ICML.

Authors: Masha Naslidnyk, Siu Lun Chau, François-Xavier
Briol (Unit London), Krikamol Muandet (Unit Saarbrücken)

[Credal two-sample tests of epistemic uncertainty](#).

AISTATS.

Authors: Siu Lun Chau, Antonin Schrab, Arthur Gretton
(Unit London), Dino Sejdinovic, Krikamol Muandet (Unit

Saarbrücken)

[Nonparametric instrumental variable regression with
observed covariates](#). arXiv preprint. Authors: Zikai Shen,
Zonghao Chen, Dimitri Meunier, Ingo Steinwart (Unit
Stuttgart), Arthur Gretton (Unit London), Zhu Li

Associate Unit Lviv

Date Established: December 2023

Members: 4

Research Focus:

- Machine Learning with Applications to 3D
Computer Vision
- Embodied AI and Indoor Robot Navigation
- Natural Language Processing with Emphasis on
Low-Resource Languages
- Text Mining and Knowledge Discovery in Natural
Language Texts
- Responsible AI

Participating Institution:

Ukrainian Catholic University

Unit Director:

Rostyslav Hryniv

Member • Unit Director
Ukrainian Catholic University

2025 Highlights:

June: [ELLIS Workshop on Natural Language Processing
and Speech Recognition](#), jointly organised with ELLIS Unit
Prague

Unit Madrid

Date Established: June 2022

Members: 23

Research Focus:

- Interpretability
- Causality
- Probabilistic Machine Learning
- Analysis of Dynamic Scenarios and Cross-cutting
Quantum Technologies

Participating Institutions:

Complutense University of Madrid

King Juan Carlos University

University Carlos III of Madrid

University of Alcalá

Technical University of Madrid

Autonomous University of Madrid

Unit Directors:

Antonio Artés-Rodríguez

Member • Unit Director
University Carlos III of Madrid

Antonio G. Marques

Member • Unit Director
King Juan Carlos University

Unit Coordinator:

Patricia Tablado Felix

Unit Coordinator
University Carlos III of Madrid

2025 Highlights

August: [Machine Learning Summer School \(MLSS\)](#) in
Arequipa, Peru

December: [IEEE International Workshop on Computational Advances in Multi-Sensor Adaptive Processing](#),

Dominican Republic

December: [Bright Minds, Cold Days: Launching the First ELLIS Madrid Winter Workshop](#), Madrid

2025 International Cross-Site Publications:

[On the Necessity of Adaptive Regularisation: Optimal Anytime Online Learning on \$\ell_p\$ -Balls](#). NeurIPS.

Authors: Emmeran Johnson, David Martínez-Rubio (Unit Madrid), Ciara Pike-Burke, Patrick Rebeschini (Unit Oxford)

[Implicit Riemannian Optimism with Applications to Min-Max Problems](#). ICML.

Authors: Christophe Roux, David Martínez-Rubio (Unit Madrid), Sebastian Pokutta (Unit Berlin)

[Secant Line Search for Frank-Wolfe Algorithms](#). ICML.

Authors: Deborah Hendrych, Mathieu Besançon, David Martínez-Rubio (Unit Madrid), Sebastian Pokutta (Unit Berlin)

[Accelerated Methods for Riemannian Min-Max Optimization Ensuring Bounded Geometric Penalties](#).

AISTATS.

Authors: David Martínez-Rubio (Unit Madrid), Christophe Roux, Christopher Criscitiello, Sebastian Pokutta (Unit Berlin)

[Black-Box Uniform Stability for Non-Euclidean Empirical Risk Minimization](#). AISTATS.

Authors: Simon Vary, David Martínez-Rubio (Unit Madrid), Patrick Rebeschini (Unit Oxford)

Unit Manchester

Date Established: September 2021

Members: 19

Research Focus:

- Probabilistic Machine Learning
- AI for Healthcare and Biology
- Natural Language Processing
- AI Fundamentals

Participating Institution:

University of Manchester

Unit Director:

Magnus Rattray

Fellow • Unit Director

University of Manchester

Unit Coordinator:

Matthew Harrison

Unit Coordinator

University of Manchester

2025 Highlights:

June: [ELLIS Summer School on Machine Learning for Healthcare and Biology](#), Manchester

2025 International Cross-Site Publications:

[FUTURE-AI: international consensus guideline for trustworthy and deployable artificial intelligence in healthcare](#). BMJ.

Authors: Karim Lekadir (Unit Barcelona), Alejandro F Frangi (Unit Manchester), Antonio R Porras, Ben Glocker, Celia Cintas, Curtis P Langlotz, Eva Weicken, Folkert W Asselbergs, Fred Prior, Gary S Collins, Georgios Kaissis,

Gianna Tsakou, Irène Buvat, Jayashree Kalpathy-Cramer, John Mongan, Julia A Schnabel (Unit Munich), Kaisar Kushibar, Katrine Riklund, Kostas Marias, Lameck M Amugongo, Lauren A Fromont, Lena Maier-Hein (Unit Heidelberg), Leonor Cerdá-Alberich, Luis Martí-Bonmatí, M Jorge Cardoso, Maciej Bobowicz, Mahsa Shabani, Manolis Tsiknakis, Maria A Zuluaga, Marie-Christine Fritzsche, Marina Camacho, Marius George Linguraru, Markus Wenzel, Marleen De Bruijne, Martin G Tolsgaard, Melanie Goisau, Mónica Cano Abadía, Nikolaos Papanikolaou, Noussair Lazrak, Oriol Pujol, Richard Osuala, Sandy Napel, Sara Colantonio, Smriti Joshi, Stefan Klein, Susanna Aussó, Wendy A Rogers, Zohaib Salahuddin, Martijn P A Starmans [Deep Learning-based Alignment Measurement in Knee Radiographs](#). MICCAI.

Authors: Zhisen Hu, Dominic Cullen, Peter Thompson, David Johnson, Chang Bian, Aleksei Tiulpin (Unit Helsinki), Timothy Cootes, Claudia Lindner (Unit Manchester) [Explosive Jumping with Rigid and Articulated Soft Quadrupeds via Example Guided Reinforcement Learning](#). IROS. Authors: Georgios Apostolides, Wei Pan (Unit Manchester), Jens Kober (Unit Delft), Cosimo Della Santina, Jiatao Ding

[PABBO: Preferential Amortized Black-Box Optimization](#). ICLR. Authors: Xinyu Zhang, Daolang Huang, Samuel Kaski (Unit Manchester & ELLIS Institute Finland), Julien Martinelli (ELLIS Institute Finland)

[DroneDiffusion: Robust Quadrotor Dynamics Learning with Diffusion Models](#). ICRA.

Authors: Avirup Das, Rishabh Dev Yadav, Sihao Sun (Unit Delft), Mingfei Sun (Unit Manchester), Samuel Kaski (ELLIS Institute Finland & Unit Manchester), Wei Pan (Unit Manchester)

Unit Milan

Date Established: October 2021

Members: 36

Research Focus:

- Interactive Learning and Game Theory
- Statistical Learning and Non-convex Optimization
- Health and Computational Biology
- Natural Language Processing
- Computational Social Sciences
- Neural Networks, in Connection with Classical AI and Neuroscience

Participating Institutions:

Bocconi University

Università Degli Studi di Milano

Università degli Studi Milano Bicocca

Politecnico di Milano

Unit Director:

Nicolò Cesa-Bianchi

Fellow • Program Director • Unit Director • Board Member

University of Milan

Unit Coordinator:

Giulia Clerici

Unit Coordinator

University of Milan, ELLIS Society

2025 Highlights:

February: [ALT conference](#), Milan

November: ELLIS Pre-NeurIPS Fest, Milan

2025 International Cross-Site Publications:

[Of Dice and Games: A Theory of Generalized Boosting.](#)

arXiv preprint.

Authors: Marco Bressan, Nataly Brukhim, Nicolò Cesa-Bianchi (Unit Milan), Emmanuel Esposito (Unit Milan), Yishay Mansour (Unit Tel Aviv), Shay Moran, Maximilian Thiessen

[A Fine-grained Characterization of PAC Learnability.](#)

PMLR.

Authors: Marco Bressan (Unit Milan), Nataly Brukhim, Nicolò Cesa-Bianchi (Unit Milan), Emmanuel Esposito (Unit Milan), Yishay Mansour (Unit Tel Aviv), Shay Moran, Maximilian Thiessen

Unit Modena

Date Established: September 2020

Members: 14

Research Focus:

- Computer Vision
- Large-scale AI and Multimedia
- Trustworthy AI
- Theoretical Machine Learning
- Continual Learning
- Health and Bioinformatics

Participating Institutions:

CINECA

University of Modena and Reggio Emilia

University of Florence

Unit Director:

Rita Cucchiara

Fellow • Unit Director

University of Modena and Reggio Emilia

Unit Coordinator:

Lorenzo Baraldi

Scholar • Unit Coordinator

University of Modena and Reggio Emilia

2025 Highlights

September: [Consortium Meeting of the ELIAS project](#), Modena

December: [ELLIS Pre-NeurIPS Fest](#), Modena

2025 International Cross-Site Publications:

[Accurate and Efficient Low-Rank Model Merging in Core Space.](#) NeurIPS.

Authors: Aniello Panariello, Daniel Marczak, Simone Magistri, Angelo Porrello (Unit Modena), Bartłomiej Twardowski (Unit Warsaw), Andrew D. Bagdanov (Unit Modena), Simone Calderara (Unit Modena), Joost van de Weijer (Unit Barcelona)

[Hyperbolic Safety-Aware Vision-Language Models.](#) CVPR.

Authors: Tobia Poppi, Tejaswi Kasarla, Pascal Mettes (Unit Amsterdam), Lorenzo Baraldi (Unit Modena), Rita Cucchiara (Unit Modena)

Unit Munich

Date Established: May 2020

Members: 33

Research Focus:

- Biomedicine
- Earth Observation
- Computer Vision

Participating Institutions:

Technical University of Munich

Ludwig Maximilian University of Munich

Helmholtz Munich

Unit Directors:

Daniel Cremers

Fellow • Unit Director

Technical University of Munich

Fabian Theis

Fellow • Unit Director

Helmholtz Munich

Unit Coordinators:

Emma van Holthe

Unit Coordinator

Helmholtz Munich

Ellia Wamese

Unit Coordinator

Technical University of Munich

2025 Highlights:

March: [The landmark Helmholtz-ELLIS Workshop on Foundation Models in Science](#), Berlin, co-organised by ELLIS Units Heidelberg, Potsdam, and Munich

July: [ELLIS Pre-ICML Fest](#), Munich

2025 International Cross-Site Publications

[FUTURE-AI: international consensus guideline for trustworthy and deployable artificial intelligence in healthcare](#). BMJ.

Authors: Karim Lekadir (Unit Barcelona), Alejandro F Frangi (Unit Manchester), Antonio R Porras, Ben Glocker, Celia Cintas, Curtis P Langlotz, Eva Weicken, Folkert W Asselbergs, Fred Prior, Gary S Collins, Georgios Kaissis, Gianna Tsakou, Irène Buvat, Jayashree Kalpathy-Cramer, John Mongan, Julia A Schnabel (Unit Munich), Kaisar Kushibar, Katrine Riklund, Kostas Marias, Lameck M Amugongo, Lauren A Fromont, Lena Maier-Hein (Unit Heidelberg), Leonor Cerdá-Alberich, Luis Martí-Bonmatí, M Jorge Cardoso, Maciej Bobowicz, Mahsa Shabani, Manolis Tsiknakis, Maria A Zuluaga, Marie-Christine Fritzsche, Marina Camacho, Marius George Linguraru, Markus Wenzel, Marleen De Bruijne, Martin G Tolsgaard, Melanie Goisauf, Mónica Cano Abadía, Nikolaos Papanikolaou, Noussair Lazrak, Oriol Pujol, Richard Osuala, Sandy Napel, Sara Colantonio, Smriti Joshi, Stefan Klein, Susanna Aussó, Wendy A Rogers, Zohaib Salahuddin, Martijn P A Starmans
[Feed-Forward SceneDINO for Unsupervised Semantic Scene Completion](#). ICCV.

Authors: Aleksandar Jevtić, Christoph Reich, Felix Wimbauer, Oliver Hahn, Christian Rupprecht (Unit Oxford), Stefan Roth (Unit Darmstadt), Daniel Cremers (Unit Munich)

Unit Nijmegen

Date Established: September 2020

Members: 11

Research Focus:

- Neural Computation
- AI Techniques for Improving Healthcare
- Neuromorphic Computing
- Brain-Inspired Computing
- Neurotechnology
- Health and Sustainability

Participating Institutions:

Donders Institute for Brain, Cognition, and Behaviour

Innovation Center for Artificial Intelligence

Radboud University Medical Center

Radboud University

Unit Director:

Marcel van Gerven

Fellow • Unit Director

Radboud University

Unit Coordinators:

Inge Wortel

Unit Coordinator

Radboud University

Esther van Straten

Unit Coordinator

Radboud University

2025 Highlights:

October: [ELLIS Coordinators Retreat](#), jointly organised by Units Amsterdam, Delft and Nijmegen

2025 International Cross-Site Publications:

[Invariant neural architecture for learning term synthesis in instantiation proving](#). JAIR.

Authors: *Jelle Piepenbrock (Unit Nijmegen), Josef Urban (Unit Prague), Konstantin Korovin, Miroslav Olšák, Tom Heskes, Mikoláš Janota*

Unit Paris

Date Established: September 2020

Members: 42

Research Focus:

- Computer Vision
- Data Analysis
- Digital Humanities
- Imaging Sciences
- Machine Learning
- Neuroscience
- Statistical Learning

Participating Institutions:

PR[AI]RIE (Paris Artificial Intelligence Research Institute)

SCAI (Sorbonne Cluster for Artificial Intelligence)

DATAIA Institute

Hi!PARIS

Unit Director:

Gabriel Peyré

Fellow • Unit Director

Département de Mathématiques et Applications de l'ENS, École Normale Supérieure, French National Centre for Scientific Research

Unit Coordinator:

Stefan Zieme

Unit Coordinator

École Normale Supérieure, French National Centre for Scientific Research, Observatoire de Paris - PSL University

2025 International Cross-Site Publications:

[Learning \(Approximately\) Equivariant Networks via Constrained Optimization](#). NeurIPS.

Authors: *Andrei Manolache, Luiz F.O. Chamon (Unit Paris & Unit Stuttgart), Mathias Niepert (Unit Stuttgart)*

[Lost in Translation, Found in Context: Sign Language Translation with Contextual Cues](#). CVPR.

Authors: *Youngjoon Jang, Haran Raajesh, Liliane Momeni, Gül Varol (Unit Paris), Andrew Zisserman (Unit Oxford)*

[Beyond Quantification: Navigating Uncertainty in](#)

[Professional AI Systems](#). RSS.

Authors: *Sylvie Delacroix (Unit London), Diana Robinson, Umang Bhatt, Jacopo Domenicucci, Jessica Montgomery, Gael Varoquaux (Unit Paris), Carl Henrik Ek (Unit Cambridge), Vincent Fortuin (Unit Munich), Yulan He, Tom Diethe, Neill Campbell, Mennatallah El-Assady (Unit Zurich), Søren Hauberg (Unit Copenhagen), Ivana Dusparic, Neil Lawrence (Unit Cambridge)*

[Statistical Advantage of Softmax Attention: Insights from Single-Location Regression](#). arXiv preprint.

Authors: *Odilon Durrant, Pierre Marion, Claire Boyer, Bruno Loureiro (Unit Paris), Lenka Zdeborová (Unit Lausanne)*

Unit Potsdam

Date Established: March 2023

Members: 10

Research Focus:

- Scalable AI
- Causal AI
- Explainable AI
- Interdisciplinary Research
- Public Health Applications
- Energy Management

Participating Institutions:

Hasso Plattner Institute

University of Potsdam

Center for AI in Public Health Research at the Robert Koch Institute

Unit Directors:

Katharina Ladewig

Member • Unit Director

Robert Koch Institute

Ralf Herbrich

Fellow • Unit Director

Hasso Plattner Institute for Digital Engineering gGmbH,

University of Potsdam

Sebastian Reich

Member • Unit Director

University of Potsdam

Unit Coordinator:

Marija Petrovic

Unit Coordinator

Hasso Plattner Institute for Digital Engineering gGmbH

2025 Highlights:

March: [Helmholtz-ELLIS Workshop on Foundation Models in Science](#), Berlin, co-organised by ELLIS Units Heidelberg, Potsdam, and Munich

July: [CLIMADEMIC Summer School](#), Berlin

November: [ELLIS Pre-NeurIPS poster session](#), Potsdam

December: [AI@HPI Conference](#), Potsdam

2025 International Cross-Site Publications:

[On the Challenges and Opportunities in Generative AI](#). TMLR.

Authors: Laura Manduchi, Clara Meister, Kushagra Pandey, Robert Bamler, Ryan Cotterell (Unit Zurich), Sina Däubener, Sophie Fellenz, Asja Fischer, Thomas Gärtner, Matthias Kirchler, Marius Kloft, Yingzhen Li, Christoph Lippert, Gerard de Melo (Unit Potsdam), Eric Nalisnick, Björn Ommer, Rajesh Ranganath, Maja Rudolph, Karen Ullrich, Guy Van den Broeck, Julia E Vogt (Unit Zurich), Yixin Wang, Florian Wenzel, Frank Wood, Stephan Mandt (Unit Potsdam), Vincent Fortuin (Unit Munich)

[Large language models improve transferability of electronic health record-based predictions across countries and coding systems](#). npj Digital Medicine.

Authors: Matthias Kirchler, Matteo Ferro, Veronica Lorenzini, Robin P van de Water, Christoph Lippert (Unit Potsdam), Andrea Ganna (Unit Helsinki)

Unit Prague

Date Established: September 2019

Members 5

Participating Institutions:

Czech Technical University

Charles University

Institute of Organic Chemistry and Biochemistry of the Czech Academy of Science

Unit Director:

Josef Sivic

Fellow • Unit Director • Board Alumni

Czech Technical University in Prague, École Normale Supérieure, National Institute for Research in Digital Science and Technology

Unit Coordinator:

Marcela Kamenska

Unit Coordinator

Czech Technical University in Prague

2025 Highlights:

June: [ELLIS Workshop on Natural Language Processing and Speech Recognition](#), online, jointly organised with Associate Unit Lviv

2025 International Cross-Site Publications

[Drive&Segment: Unsupervised Semantic Segmentation of Urban Scenes via Cross-modal Distillation](#). IJCV.

Authors: Antonin Vobecky, David Hurych, Oriane Siméoni, Spyros Gidaris, Andrei Bursuc (Unit Paris), Patrick Pérez, Josef Sivic (Unit Prague)

[ShowHowTo: Generating Scene-Conditioned Step-by-Step](#)

[Visual Instructions](#). CVPR.

Authors: Tomáš Souček, Prajwal Gatti, Michael Wray, Ivan Laptev (Unit Paris), Dima Damen, Josef Sivic (Unit Prague)

Unit Saarbrücken

Date Established: September 2020

Members: 19

Research Focus:

- Foundations for Enhanced AI/ML Functionalities
- Security, Privacy, and Trustworthy AI/ML
- Multi-Sensor Perception and World Modeling
- Knowledge Derivation and Inference
- Human–AI Interaction and Autonomous Decision-Making

Participating Institutions:

CISPA Helmholtz Center for Information Security

Max Planck Institute for Informatics

Max Planck Institute for Software Systems

Saarland University

Unit Director:

Bernt Schiele

Fellow • Program Director • Unit Director

Max Planck Institute for Informatics, Saarland University

Unit Coordinator:

Connie Balzert

Unit Coordinator

Max Planck Institute for Informatics

2025 Highlights:

December: [ELLIS Unconference Workshop “LLM Safety and Security”](#), Copenhagen, co-organised by ELLIS Institute Tübingen, Unit Saarbrücken, and Unit Vienna

2025 International Cross-Site Publications:

[Can LLMs Separate Instructions From Data? And What Do We Even Mean By That?](#) ICLR.

Authors: Egor Zverev, Sahar Abdelnabi (ELLIS Institute Tübingen), Mario Fritz (Unit Saarbrücken), Christoph H. Lampert (Unit Vienna)

[How to Probe: Simple Yet Effective Techniques for Improving Post-hoc Explanations.](#) ICLR.

Authors: Siddhartha Gairola, Moritz Böhle, Francesco Locatello (Unit Vienna), Bernt Schiele (Unit Saarbrücken).

[On Stealing Graph Neural Network Models.](#) AAAI.

Authors: Marcin Podhajski, Jan Dubiński, Franziska Boenisch (Unit Saarbrücken), Adam Dziedzic, Agnieszka Pręgoszka, Tomasz P. Michalak (Unit Warsaw)

Unit Sofia

Date Established: September 2023

Members: 7

Research Focus:

- Computer Vision and Robotics
- Algorithms and Theory
- Quantum Computing
- Machine Learning
- Regulatory AI Compliance

Participating Institution:

Institute for Computer Science, Artificial Intelligence and Technology

Unit Director:

Luc Van Gool

Fellow • Unit Director

Institute for Computer Science, Artificial Intelligence and Technology

Unit Coordinator:

Konstantin Makedonskiy

Unit Coordinator

Institute for Computer Science, Artificial Intelligence and Technology

Unit Stuttgart

Date Established: January 2021

Members 8

Research Focus:

- Algorithmic Advances in Machine Learning
- Integration of ML Algorithms into Autonomous Intelligent Systems
- Societal and Ethical Aspects of AI Development
- Interdisciplinary Research at the Intersection of Computer Science, Engineering, and Social Sciences
- Bridging Algorithms with Engineering and Social Science Expertise

Participating Institutions:

Max Planck Institute for Intelligent Systems
University of Stuttgart

Unit Directors:

Andreas Bulling

Fellow • Unit Director

University of Stuttgart

Ingo Steinwart

Fellow • Unit Director

University of Stuttgart

Unit Coordinator:

Katrin Fauss

Unit Coordinator

University of Stuttgart

2025 Highlights:

Ongoing: [ELLIS Unit Stuttgart Distinguished Lecture Series 2025](#), online and Stuttgart

July: [ELLIS Unit Stuttgart Summer Symposium](#), Stuttgart

2025 International Cross-Site Publications:

[Nonparametric instrumental variable regression with observed covariates.](#) arXiv preprint.

Authors: Zikai Shen, Zonghao Chen, Dimitri Meunier, Ingo Steinwart (Unit Stuttgart), Arthur Gretton (Unit London), Zhu Li

[Learning \(Approximately\) Equivariant Networks via Constrained Optimization.](#) NeurIPS.

Authors: Andrei Manolache, Luiz F.O. Chamon (Unit Paris & Unit Stuttgart), Mathias Niepert (Unit Stuttgart)

[Is Complex Query Answering Really Complex?](#) ICML, Spotlight.

Authors: Cosimo Gregucci, Bo Xiong, Daniel Hernández, Lorenzo Loconte, Pasquale Minervini (Unit Edinburgh), Steffen Staab (Unit Stuttgart), Antonio Vergari (Unit Edinburgh)

Unit Tel Aviv

Date Established: December 2019

Members: 9

Research Focus:

- Theoretical Foundations of Machine Learning
- Computer Vision
- Efficient Machine Learning Methods
- Applications of AI to Scientific Research
- Development of Advanced AI Models through Basic Research
- Data Science Across Academic Disciplines

Participating Institution:

Tel Aviv University

Unit Director:

Amir Globerson

Fellow • Unit Director

Tel Aviv University

Unit Coordinator:

Hilla Einy

Unit Coordinator

Tel Aviv University

2025 International Cross-Site Publications:

[Detecting and Pruning Prominent but Detrimental Neurons](#)

[in Large Language Models](#). COLM.

Authors: Ameen Ali, Shahar Katz, Lior Wolf (Unit Tel Aviv), Ivan Titov (Unit Edinburgh)

[A Fine-grained Characterization of PAC Learnability](#).

PMLR.

Authors: Marco Bressan (Unit Milan), Nataly Brukhim, Nicolò Cesa-Bianchi (Unit Milan), Emmanuel Esposito (Unit Milan), Yishay Mansour (Unit Tel Aviv), Shay Moran, Maximilian Thiessen

[Revisiting Glorot Initialization for Long-Range Linear Recurrences](#). NeurIPS.

Authors: Noga Bar, Mariia Seleznova, Yotam Alexander, Gitta Kutyniok (Unit Munich), Raja Giryes (Unit Tel Aviv)

Unit Trento

Date Established: February 2023

Members: 24

Research Focus:

- Foundational Research on Machine Learning
- Computer Vision
- Remote Sensing
- Natural Language Processing and Application-oriented Activities

Participating Institutions:

Fondazione Bruno Kessler

University of Trento

Unit Directors:

Bruno Lepri

Fellow • Unit Director

Fondazione Bruno Kessler, MIT Media Lab

Nicu Sebe

Fellow • Program Director • Unit Director

University of Trento

Unit Coordinator:

Cecilia Zanazzo

Unit Coordinator

University of Trento

2025 Highlights:

January: [ELIAS ELLIS VISMAC Winter School](#), Brunico

May: [Computer Vision Trento Symposium](#), Trento

December: [ELLIS Post-NeurIPS Fest](#), Trento

2025 International Cross-Site Publications:

[Spatial-Temporal Graph Mamba for Music-Guided Dance Video Synthesis](#). IEEE.

Authors: Hao Tang, Ling Shao, Zhenyu Zhang, Luc Van Gool (Unit Sofia), Nicu Sebe (Unit Trento)

[Enhanced Multi-Scale Cross-Attention for Person Image Generation](#). IEEE.

Authors: Hao Tang, Ling Shao, Nicu Sebe (Unit Trento), Luc Van Gool (Unit Sofia)

[SceneSplat++: A Large Dataset and Comprehensive Benchmark for Language Gaussian Splatting](#). [Neural Information Processing Systems](#). NeurIPS.

Authors: Yue Li, Qi Ma, Runyi Yang, Huapeng Li, Mengjiao Ma, Bin Ren, Nikola Popovic, Nicu Sebe (Unit Trento), Ender Konukoglu, Theo Gevers, Luc Van Gool (Unit Sofia), Martin R. Oswald, Danda Pani Paudel (Unit Sofia)

[Beauty and the Bias: Exploring the Impact of Attractiveness on Multimodal Large Language Models.](#)

AIES.

Authors: Aditya Gulati, Moreno D'Inca, Nicu Sebe (Unit Trento), Bruno Lepri (Unit Trento), Nuria Oliver (Unit Alicante)

[SceneSplat: Gaussian Splatting-based Scene Understanding with Vision-Language Pretraining.](#) ICCV.

Authors: Yue Li, Qi Ma, Runyi Yang, Huapeng Li, Mengjiao Ma, Bin Ren, Nikola Popovic, Nicu Sebe (Unit Trento), Ender Konukoglu, Theo Gevers (Unit Amsterdam), Luc Van Gool (Unit Sofia), Martin R. Oswald (Unit Amsterdam), Danda Pani Paudel (Unit Sofia)

Unit Tübingen

Date Established: September 2020

Members: 15

Research Focus:

- Foundations of Machine Learning and Robust Intelligence
- Open and Efficient Foundation Models
- Autonomous Perception and Decision Making
- Safety, Alignment, and Trustworthy AI
- AI for Education and Societal Impact
- Scientific Discovery with AI
- AI for Medicine and the Life Sciences
- Algorithms, Law, and Society

Participating Institution:

Tübingen AI Center at the University of Tübingen and Max Planck Institute for Intelligent Systems

Unit Directors:

Matthias Bethge

Fellow • Program Director • Unit Director • Board Alumni
University of Tübingen, Tübingen AI Center

Bernhard Schölkopf

Fellow • Program Director • Unit Director • Board Alumni
ELLIS Institute Tübingen, Max Planck Institute for Intelligent Systems, Tübingen AI Center

2025 International Cross-Site Publications:

[DepthSplat: Connecting Gaussian Splatting and Depth.](#) CVPR.

Authors: Haofei Xu, Songyou Peng, Fangjinhua Wang, Hermann Blum, Daniel Barath, Andreas Geiger (Unit Tübingen), Marc Pollefeys (Unit Zurich)

[Learning convolution operators on compact Abelian groups.](#) arXiv preprint.

Authors: Emilia Magnani, Ernesto De Vito (Unit Genoa), Philipp Hennig (Unit Tübingen), Lorenzo Rosasco (Unit Genoa)

[A sober look at progress in language model reasoning: Pitfalls and paths to reproducibility.](#) COLM.

Authors: Andreas Hochlehnert, Hardik Bhatnagar, Vishaal Udandarao, Samuel Albanie (Unit Cambridge), Ameya Prabhu, Matthias Bethge (Unit Tübingen)

[Active Fine-Tuning of Multi-Task Policies.](#) ICML.

Authors: Marco Bagatella, Jonas Hübotter, Georg Martius (Unit Tübingen), Andreas Krause (Unit Zurich)

[MathGAP: Out-of-Distribution Evaluation on Problems with Arbitrarily Complex Proofs.](#) ICLR.

Authors: Andreas Opedal, Haruki Shirakami, Bernhard Schölkopf (Unit Tübingen & ELLIS Institute Tübingen), Abulhair Saparov, Mrinmaya Sachan (Unit Zurich)

Institute Tübingen

Date Established: July 2023

Members: 13

Research Focus:

- AI & Mechanisms
- AI Safety & Alignment
- Science and Probabilistic Intelligence
- Cooperative Machine Intelligence for People-Aligned Safe Systems
- Algorithms & Society
- AutoML
- Computational Applied Mathematics & AI Lab
- Empirical Inference
- Deep Models and Optimization
- Safety- and Efficiency- aligned Learning
- Robust Machine Learning
- Wild, Efficient, and Innovative AI

Participating Institutions:

Cyber Valley

Max Planck Institute for Intelligent Systems

Tübingen AI Center

Institute Director:

Bernhard Schölkopf

Fellow • Program Director • Institute Director •

Board Alumni

ELLIS Institute Tübingen, Max Planck Institute for Intelligent Systems, Tübingen AI Center

Institute Coordinator:

Carmela Rianna

Scientific Project Manager

ELLIS Institute Tübingen

2025 Highlights:

March: [ELLIS Institute Scientific Symposium](#), Tübingen

July: [Tübingen AI Summer Poster Event](#), Tübingen

December: [Pre-NeurIPS Poster Session](#), Tübingen

2025 International Cross-Site Publications:

[Generative Intervention Models for Causal Perturbation Modeling](#). ICML.

Authors: Nora Schneider, Lars Lorch, Niki Kilbertus (Unit Munich), Bernhard Schölkopf (ELLIS Institute Tübingen), Andreas Krause (Unit Zurich)

[Generalized Interpolating Discrete Diffusion](#). ICML 2025

Authors: Dimitri von Rütte, Janis Fluri, Yuhui Ding, Antonio Orvieto (ELLIS Institute Tübingen), Bernhard Schölkopf (Unit Tübingen & ELLIS Institute Tübingen), Thomas Hofmann (Unit Zurich)

[Generalized Linear Mode Connectivity for Transformers](#).

NeurIPS, Full Oral.

Authors: Alexander Theus, Alessandro Cabodi, Sotiris Anagnostidis, Antonio Orvieto (ELLIS Institute Tübingen), Sidak Pal Singh, Valentina Boeva (Unit Zurich)

[OS-Harm: A Benchmark for Measuring Safety of Computer Use Agents](#). NeurIPS, Spotlight.

Authors: Thomas Kuntz, Agatha Duzan, Hao Zhao, Francesco Croce (ELLIS Institute Finland), J. Zico Kolter, Nicolas Flammarion (Unit Lausanne), Maksym Andriushchenko (ELLIS Institute Tübingen)

[DeltaProduct: Improving State-Tracking in Linear RNNs via Householder Products](#). NeurIPS.

Authors: Julien Siems, Timur Carstensen, Arber Zela, Frank Hutter (ELLIS Institute Tübingen), Massimiliano Pontil (Unit Genoa), Riccardo Grazi

Unit Turin

Date Established: September 2020

Members: 9

Research Focus:

- Adaptive and Incremental Learning
- Distributed and Federated Learning
- Visual Place Recognition
- Scene and Video Understanding
- Learning
- Reinforcement Learning
- Trustworthy and Fair AI Models
- Remote Sensing and Multi-Image Super-Resolution
- Graph Learning

Participating Institutions:

ISI Foundation

LINKS Foundation

Politecnico di Torino

University of Torino

Unit Director:

Tatiana Tommasi

Scholar • Unit Director

Politecnico di Torino

Unit Coordinator:

Alessandra Calosso

Unit Coordinator

Politecnico di Torino

2025 Highlights:

Ongoing: [ELLIS Turin Talks Series](#), online

November: [National AI PhD Fall School](#), Turin

November: [ELLIS Pre-NeurIPS Fest](#), Turin, co-organised by

Unit Turin and Unit Genoa

2025 International Cross-Site Publications:

[Diversity-Driven Learning: Tackling Spurious Correlations and Data Heterogeneity in Federated Models](#). IEEE FLTA.

Authors: Gergely D. Nemeth, Eros Fani, Yeat Jeng Ng, Barbara Caputo (Unit Turin), Miguel Ángel Lozano, Nuria Oliver (Unit Alicante), Novi Quadrianto

[Road Obstacle Video Segmentation](#). DAGM.

Authors: Shyam Nandan Rai, Shyamgopal Karthik, Mariana-Iuliana Georgescu, Barbara Caputo (Unit Turin), Carlo Masone (Unit Turin), Zeynep Akata (Unit Tübingen & Unit Munich)

Unit Vienna

Date Established: October 2019

Members: 7

Research Focus:

- Trustworthy Machine Learning
- Theory of Deep Learning
- Discrete and Continuous Optimization
- Statistical and Causal Models for the Natural Sciences and Engineering

Participating Institution:

Institute of Science and Technology Austria

Unit Director:

Christoph H. Lampert

Fellow • Unit Director

Institute of Science and Technology Austria

Unit Coordinator:

Helene Thekkekara Puthenparampil

Unit Coordinator

Institute of Science and Technology Austria

2025 Highlights:

December: [ELLIS Unconference Workshop “LLM Safety and Security”](#), Copenhagen, co-organised by ELLIS Institute Tübingen, Unit Saarbrücken, and Unit Vienna

2025 International Cross-Site Publications:

[Can LLMs Separate Instructions From Data? And What Do We Even Mean By That?](#) ICLR.

Authors: Egor Zverev, Sahar Abdelnabi (ELLIS Institute Tübingen), Mario Fritz (Unit Saarbrücken), Christoph H. Lampert (Unit Vienna)

[How to Probe: Simple Yet Effective Techniques for Improving Post-hoc Explanations.](#) ICLR.

Authors: Siddhartha Gairola, Moritz Böhle, Francesco Locatello (Unit Vienna), Bernt Schiele (Unit Saarbrücken)
[Mechanistic PDE Networks for Discovery of Governing Equations.](#) ICML.

Authors: Adeel Pervez, Efstratios Gavves (Unit Amsterdam), Francesco Locatello (Unit Vienna)

[Prediction-Powered Causal Inferences.](#) NeurIPS.

Authors: Riccardo Cadei, Ilker Demirel, Piersilvio De Bartolomeis, Lukas Lindorfer, Sylvia Cremer, Cordelia Schmid (Unit Paris), Francesco Locatello (Unit Vienna)

[Connecting Neural Models Latent Geometries with Relative Geodesic Representations.](#) NeurIPS.

Authors: Hanlin Yu, Berfin Inal, Georgios Arvanitidis (Unit Copenhagen), Soren Hauberg (Unit Copenhagen), Francesco Locatello (Unit Vienna), Marco Fumero

Unit Warsaw

Date Established: November 2023

Members: 13

Research Focus:

- Intelligent Algorithms and Learned Data Structures
- Efficient and Sustainable Machine Learning Focused on Computer Vision
- Machine Learning and Sequential Decision-Making
- Algorithmic Game Theory in Security
- Interpretable Artificial Intelligence
- Autonomous Agents and Alignment of Language Models

Participating Institutions:

IDEAS Research Institute

University of Warsaw

Warsaw University of Technology

Unit Director:

Tomasz Trzciniński

Fellow • Unit Director

IDEAS Research Institute, Warsaw University of Technology

Unit Coordinator:

Artur Kołodziejczyk-Skowron

Unit Coordinator

IDEAS Research Institute

2025 Highlights:

September: Hosted [ELLIS Doctoral Symposium](#), Warsaw

November: [Pre-NeurIPS Fest](#), Warsaw

2025 International Cross-Site Publications:

[Accurate and Efficient Low-Rank Model Merging in Core](#)

[Space.](#) NeurIPS.

Authors: Aniello Panariello, Daniel Marczak, Simone Magistri, Angelo Porrello (Unit Modena), Bartłomiej Twardowski (Unit Warsaw), Andrew D. Bagdanov (Unit Modena), Simone Calderara (Unit Modena), Joost van de Weijer (Unit Barcelona)

[Covariances for Free: Exploiting Mean Distributions for Training-free Federated Learning.](#) NeurIPS.

Authors: Dipam Goswami, Simone Magistri, Kai Wang, Bartłomiej Twardowski (Unit Warsaw), Andrew D. Bagdanov (Unit Modena), Joost van de Weijer (Unit Barcelona)

[ProSpero: Active Learning for Robust Protein Design Beyond Wild-Type Neighborhoods.](#) NeurIPS.

Authors: Michał Kmicikiewicz, Vincent Fortuin (Unit Munich), Ewa Szczurek (Unit Warsaw)

[Explaining Similarity in Vision-Language Encoders with Weighted Banzhaf Interactions.](#) NeurIPS.

Authors: Hubert Baniecki, Maximilian Muschalik, Fabian Fumagalli, Barbara Hammer, Eyke Hüllermeier (Unit Munich), Przemysław Biecek (Unit Warsaw)

[On Stealing Graph Neural Network Models.](#) AAAI.

Authors: Marcin Podhajski, Jan Dubiński, Franziska Boenisch (Unit Saarbrücken), Adam Dziedzic, Agnieszka Pręgoswska, Tomasz P. Michalak (Unit Warsaw)

Unit Zurich

Date Established: September 2020

Members: 27

Research Focus:

- Foundations of Artificial Intelligence

- AI Applications Across Domains
- Trustworthy, Accessible, and Inclusive AI
- Industry Innovation and AI Entrepreneurship

Participating Institutions:

ETH AI Center at ETH Zurich

Unit Director:

Andreas Krause

Fellow • Program Director • Unit Director

ETH Zurich

Unit Coordinator:

Alexander Ilic

Unit Coordinator

ETH Zurich

2025 Highlights:

June: [Pre-ICML Poster Session](#), Zurich

November: [Pre-NeurIPS Poster Session](#), Zurich

2025 International Cross-Site Publications:

[DepthSplat: Connecting Gaussian Splatting and Depth](#).

CVPR.

Authors: Haofei Xu, Songyou Peng, Fangjinhua Wang, Hermann Blum, Daniel Barath, Andreas Geiger (Unit Tübingen), Marc Pollefeys (Unit Zurich)

[Taxonomy-Aware Evaluation of Vision-Language Models](#).

CVPR.

Authors: Vésteinn Snæbjarnarson, Kevin Du, Niklas Stoehr, Serge Belongie (Unit Copenhagen), Ryan Cotterell (Unit Zurich), Nico Lang, Stella Frank

[Active Fine-Tuning of Multi-Task Policies](#). ICML.

Authors: Marco Bagatella, Jonas Hübotter, Georg Martius (Unit Tübingen), Andreas Krause (Unit Zurich)

[MathGAP: Out-of-Distribution Evaluation on Problems with Arbitrarily Complex Proofs](#). ICLR.

Authors: Andreas Opedal, Haruki Shirakami, Bernhard Schölkopf (Unit Tübingen & ELLIS Institute Tübingen), Abulhair Saparov, Mrinmaya Sachan (Unit Zurich)

[Preference Elicitation for Offline Reinforcement Learning](#).

ICLR.

Authors: Alizée Pace, Bernhard Schölkopf (Unit Tübingen & ELLIS Institute Tübingen), Gunnar Rätsch (Unit Zurich), Giorgia Ramponi

Grants Received by ELLIS Sites

[OpenEuroLLM](#)

Funding Body: Digital Europe Programme under grant agreement No 101195233.

Funding: €2 Mio.

Funding Period: 01.02.2025 - 31.01.2028

ELLIS Sites: Institute Tübingen, Finland

[Decipher-M](#)

Funding Body: BMBF

Funding: €5.5 Mio.

Funding Period: 01.03.2025 - 29.02.2028

ELLIS Sites: Heidelberg, Helsinki

[EuroLLM, a cross-European large language model project](#)

[EURO-HPC Joint Undertaking](#)

Funding Body: European High Performance Computing Joint Undertaking (EuroHPC JU)

Funding: €420,000

Funding Period: 01.05.2024 - 30.04.2025

ELLIS Sites: Amsterdam, Paris, Lisbon, Edinburgh

[ELLIOT – European Large Open Multi-Modal Foundation](#)

[Models For Robust Generalization \(EU Project Info\)](#)

• HORIZON-RIA (HORIZON Research and Innovation Actions)

Funding Body: Horizon Europe

Funding: €24.9 Mio.

Funding Period: 01.07.2025 - 30.06.2029

ELLIS Sites: Alicante, Amsterdam, Amsterdam, Barcelona, Helsinki, Institute Finland, Institute Tübingen, Lausanne, Manchester, Modena, Munich, Prague, Saarbrücken, Trento, Unit Tübingen, Zurich

[Hector AI + Education Future Fund](#)

Funding Body: H.W. & J. Hector Foundation

Funding: €6.2 Mio.

Funding Period: 01.07.25 - 30.06.28

ELLIS Sites: Institute Tübingen, Unit Tübingen

Projects Building on ELLIS

The following nationally and EU-funded projects build on and extend the ELLIS network by fostering researcher collaboration, supporting training and mobility opportunities, and contributing to broader policy efforts.

- **ELSA's Mobility** Program funded scientific exchanges for more than 300 researchers.
- The **ELIAS Alliance** connects researchers with startups, SMEs, and industry, fostering entrepreneurship across Europe.
- The **ELIAS Mobility** Programme funded over 6,400 days of exchange across 16 European countries.
- **ELIZA** funded 12 full ELLIS research stays, 100 travel grants for Master's Students, and 30 for PhD Students.
- **ELLIOT** brings together 13 ELLIS Units as project partners.





ELSA – European Lighthouse on Secure and Safe AI – is funded by the European Union under Grant Agreement No. 101070617, building on and expanding ELLIS to advance research in safe and secure AI. Launched in 2022, ELSA unites researchers and industry partners around three grand challenges – robustness guarantees, privacy-preserving collaborative learning, and human-in-the-loop oversight – applied across six use cases including health, autonomous driving, and cybersecurity. ELSA’s research programmes cover technical robustness, privacy-preserving techniques, and human agency.

[Visit the ELSA website →](#)

Highlights

One-year project extension granted

The European Commission approved a one-year extension to August 2026, allowing ELSA to address recent developments, including the rise of LLMs and the EU AI Act, by updating its Strategic Research Agenda and deepening collaboration with industry and network partners.

Network expansion across 12 ELLIS Units

17 new members from 12 ELLIS Units joined ELSA, broadening the lighthouse’s geographic reach.

[See the full list of new partners →](#)

Two industry open calls completed

ELSA launched two open calls for SMEs to develop technologies compliant with European requirements, with the selection of five winners in the first call and seven in the second, ELSA provides both financial support and access to expert researchers to bridge the gap between academia and industry.

Key Events

- **March:** ELSA Workshop on Privacy-Preserving Machine Learning 2025, Bertinoro, Italy
- **June:**
 - ELSA Workshop on legal and ethical aspects of Machine Learning in the light of the EU AI Act, Windermere, UK
 - ELSA General Assembly, Brussels
- **July:** [ELIAS, ELLIOT, and ELSA Theme Development Workshop on Foundation Models](#), Thessaloniki, Greece & online
- **August:** CISPA-ELLIS Summer School “Trustworthy AI – Secure and Safe Foundation Models,” Saarbrücken, with ELLIS Unit Saarbrücken

Mobility Funding

The ELSA Mobility Programme supports PhD Students, Postdocs, and experienced researchers in building

international connections across the ELSA, ELLIS, and partner networks, funding conference attendance, summer and winter schools, and research exchanges worldwide. In total, the programme covered travel costs for 170 participants at summer and winter schools, 53 participants at ELLIS Doctoral Symposiums, and supported 90 research visits across the ELLIS network.



ELIAS – European Lighthouse of AI for Sustainability – is a €11M Horizon Europe project with 35 partners across 17 countries, positioning Europe at the forefront of responsible and sustainable AI. Building on the ELLIS network, its research focuses on hybrid AI models for climate and energy applications, tools to strengthen democratic resilience, and fairness- and privacy-centred approaches to human-centric AI.

[Visit the ELIAS website →](#)

Highlights

100 new students join the ELLIS PhD Program

Around 100 PhD Students began their studies in the 2024–2025 cohort, with about 40% joining PIs affiliated with ELIAS partners.

Key Events

- **January:** [ELIAS-ELLIS-VISMACH Winter School 2025](#), Brunico, ELLIS Unit Trento
- **March:** [ELLIS Winter School 2025 on Foundation Models \(FoMo\)](#), Amsterdam, organised by ELLIS Unit Amsterdam
- **June:** [Natural Language Processing and Speech Recognition Workshop](#), online, co-organised by the ELLIS Unit Prague and the ELLIS Associate Unit Lviv
- **August:**
 - [ELLIS Doctoral Symposium #EDS2025 on Robust AI](#), Warsaw, organised by ELLIS Unit Warsaw and supported by ELIAS
 - [ELIAS, ELLIOT & ELSA Theme Development Workshop on Foundation Models](#), Thessaloniki, Greece & online
- **November:** [Thematic Workshop: Science for AI @ AI in Science Summit 2025](#), Copenhagen
- **December:** [ELIAS @ EurIPS 2025 – Rethinking AI Workshop & Startup Village](#), Copenhagen

Mobility Funding

The ELIAS Mobility Programme funds short- and long-term research exchanges for PhD Students and Postdocs to strengthen interdisciplinary collaboration and foster scientific excellence across Europe. To date, 73 applications have been supported – 68 from PhD Students and 5 from Postdocs – totalling over 6,400 funded days of exchange across 16 countries including Italy, the UK, Spain, Germany, France, the Netherlands, and beyond.



The ELIAS Alliance (European Leadership in Innovation with AI and Science) is a dedicated initiative in the ELIAS project to strengthen innovation and entrepreneurship within ELLIS. It serves as the structured vehicle for bridging scientific excellence with real-world value creation by connecting cutting-edge academic research with the building of widely deployable frontier AI applications that deliver economic as well as societal benefit.

Launched in November 2024 at the Falling Walls Science Summit in Berlin, the ELIAS Alliance currently comprises 8 Nodes across 6 countries: Amsterdam, Barcelona, Cambridge, Copenhagen, Munich, Potsdam, Tübingen, Zürich. Each Node is supported by at least three ELLIS Fellows who contribute scientific leadership and mentorship. Governance is maintained through bi-weekly meetings of all Node Spokespersons and Administrators, complemented by annual conferences/summits, joint workshops and local node activities. ELIAS Alliance is also a partner of the 3 Horizon Europe-funded grants MINERVA, OpenEuroLLM, and ELLIOT, embedding its work firmly within the broader European research and innovation funding landscape.

[Visit the ELIAS Alliance website →](#)

Highlights

Pan-European AI Launchpad

This programme supports early-stage deep-tech ventures emerging from ELLIS research, and was successfully continued in 2025, providing founders with mentoring, network access, and a pathway from academic insight to market application.

AI in Science Summit

ELIAS Alliance organised the “Science for AI” thematic workshop at the AI in Science Summit, held in Copenhagen on 3–4 November 2025, bringing together researchers, entrepreneurs, and policymakers to advance the dialogue on translating AI research into scientific and societal progress.

Frontier AI/Sciencepreneurship Award

ELIAS Alliance launched its inaugural Sciencepreneurship Award in 2025, recognising outstanding contributions at the intersection of AI research and entrepreneurship. The first award was presented to Max Welling (ELLIS Fellow, Cusp AI & University of Amsterdam), a globally recognised figure in machine learning, honouring his exemplary role as both a leading scientist and an AI entrepreneur.

Outlook: 2026 Goals

In 2026, the ELIAS Alliance will continue expanding its European footprint through a second call for Nodes, designed to integrate additional high-potential AI research and innovation ecosystems into the Alliance framework.

Additionally the ELIAS Alliance will launch the Innovation PhD Programme, a structured training initiative designed to cultivate the next generation of AI sciencepreneurs, researchers equipped to translate frontier AI work into deployable applications.

The ELIAS Alliance will also drive efforts to reduce the fragmentation across Europe by setting up an open pipeline for foundation model development. Building on shared processes, reusable model components, and coordinated development practices, this work will be closely linked to OpenEuroLLM and ELLIOT, supporting a more efficient, transparent, and collaborative European approach to foundation model development with a global open-source reach.



ELIZA – Konrad Zuse School of Excellence in Learning and Intelligent Systems – is a DAAD-funded graduate school connecting seven of Germany’s ELLIS Units (Berlin, Darmstadt, Freiburg, Heidelberg, Munich, Saarbrücken, and Tübingen) into a distributed centre of excellence for AI research and training. Spanning 14 academic institutions and strong industry partnerships, ELIZA offers Master’s and PhD Students access to world-class supervision and a curriculum grounded in European

values and human-centric AI.

By fostering mobility and cross-site collaboration, ELIZA enables junior researchers to draw on the collective expertise of Germany’s ELLIS Units. Through its connection to the broader ELLIS network, ELIZA attracts international talent and provides a seamless pathway from Master’s to PhD, strengthening Germany’s role in the global AI landscape.

[Visit the ELIZA website →](#)

Highlights

Transition to a cohesive graduate school

ELIZA successfully evolved from a distributed partner network into a unified graduate school, developing dedicated cross-site workshops and courses.

Strong research output at top-tier venues

Students and Fellows have secured multiple acceptances at premier international conferences including NeurIPS, ICML, and CVPR, with highlights including a Spotlight paper (top 2%) at NeurIPS 2024 and a featured presentation at CVPR.

[See the full list of publications →](#)

A growing, internationally diverse community

ELIZA has cultivated 74 alumni and 59 Fellows, exceeding its diversity targets with 74% international students and 42% non-male participants, while managing PhD call volumes exceeding 150 applications through a new centralised recruitment portal.

Key Events

- **March:** [The Helmholtz-ELLIS Workshop on Foundation Models in Science](#), Berlin, co-organised by ELLIS Units Heidelberg, Potsdam, and Munich and supported by ELIZA
- **July:**
 - [ELLIS Pre-ICML Fest 2025](#), Darmstadt
 - Decentralised ELIZA Welcome Event, online
- **September:** International Interdisciplinary Computational Cognitive Science Summer School (ICSSS), Darmstadt
- **December:** [ELLIS Pre-Neurips Fest 2025](#), Darmstadt

Mobility Funding

The ELIZA Mobility Programme supports students and researchers in accessing the broader ELLIS network and international research community, funding both full ELLIS research stays and conference and event travel. In total, 12 full ELLIS research stays were funded alongside approximately 100 travel grants for Master’s Students and 30 for PhD Students attending conferences and events.



ELLIOT – European Large Open Multi-Modal Foundation Models For Robust Generalization On Arbitrary Data Streams – is a €25M Horizon Europe project developing the next generation of open, trustworthy multimodal generalist foundation models (MGFMs). These are AI systems trained on diverse data types including video, text, sensor signals, and satellite feeds, and capable of robust generalisation to a wide range of downstream tasks. Unlike current foundation models, ELLIOT’s models are explicitly designed to handle dynamic, noisy, and temporally-evolving multimodal data streams across domains such as media, earth observation, robotics, mobility, computer engineering, and workflow automation.

Leveraging Europe’s supercomputing infrastructure, ELLIOT will deliver a family of open MGFMs with a fully open and reproducible pipeline – from dataset composition and training to fine-tuning and evaluation – enabling straightforward adaptation for specific industry and public sector needs.

[Visit the ELLIOT website →](#)

Highlights

Project launch

ELLIOT officially started on 1 July 2025, marking the beginning of its 48-month work programme.

Deep integration with the ELLIS network

ELLIOT brings together 13 ELLIS Units and has strengthened its ties to the ELLIS network by nominating new ELLIS Fellows and Scholars, transferring existing Fellows into the ELLIS Research Program Multimodal Learning, and appointing a new co-director of that Program ensuring ELLIOT research is closely embedded in ELLIS’s broader scientific community. Moreover, the ELLIS Reading Group on Human-centric Machine Learning has been expanded to ELLIOT, becoming the ELLIS-ELLIOT HCML Reading Group. Finally, there has been an active call to ELLIS scientists to participate in the ELLIS PhD Program as primary or secondary supervisors, encouraging collaborations within ELLIOT.

Launch of the ELLIOT website as a public project hub

The project website at www.elliot-ai.eu serves as ELLIOT’s central reference point, providing access to the project’s mission, consortium information, news, and as the project progresses, publications, open resources, and community engagement opportunities.

Key Events

- **July:** [ELIAS, ELLIOT & ELSA Theme Development Workshop on Foundation Models](#), Thessaloniki, Greece & online

- **December:** [Meet the Future of AI: Support for the European Democracy Shield: Policy, practice and partnerships](#), Brussels & online
- **Ongoing:** [ELLIS-ELLIOT Reading Group on Human-Centric Machine Learning](#)

Mobility Funding

The [ELLIOT Mobility Programme](#) supports short visits and exchanges for PhD Students, Postdocs and researchers across academic, industry, and public sector partners within the consortium and with external institutions. The aim is to cross-fertilise expertise, strengthen academia–industry links, and grow the European community around trustworthy multimodal AI.

Communication and Outreach

Overview & Goals

In late 2024, a professional, coordinated communications strategy was developed for the ELLIS Society. The primary mission was to make ELLIS's research, collaborations, and impact more visible and tangible to the community – keeping members and the broader public better informed about ongoing activities and developments.

Communication goals were defined across three levels of ELLIS:

- At the ELLIS Society level to build the brand as a leading European AI research network and promote its value.
- At the 3 Pillars level (PhD Program, Sites, Research Programs) to demonstrate and make visible the collaborative, cross-border nature and impact.
- At the Members level to highlight and promote the exceptional talent of AI researchers leading efforts in Europe, and internally, delight and support them.

Social Media

4M+
Impressions

400K+
Engagements

Website

∅ 6.7K
Traffic/Daily
+16% to 2024

~13K
Peak (in Q4)
due to PhD Applications/New
Units/EurIPS + UnConference

Newsletters

7.1K+
Subscribers

Channels

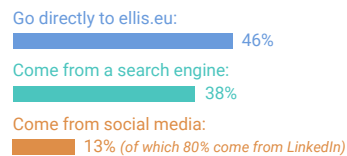
Website

In late 2024, the process of updating the ELLIS website started including setting up a new content management system (CMS) and migrating to a new database.

Completed in October 2025, the refreshed website:

- Includes filters on all lists making it easy and fast to find people.
- Has built-in member profiles that increase visitor time on the site, and uses templates to reinforce brand consistency across pages.
- Uses a customised editor with a streamlined process so the right content ends up in the right spot on the frontend.
- Is connected to the database which reduces manual updating of members' data by 50%. Updated once, it updates everywhere.
- Is built with linked records to make it easy to find, update, display, and understand our data.

How do people reach the ELLIS website?



Newsletters

ELLIS Edge

The renamed monthly newsletter, the ELLIS Edge, now reaches more than 6K followers (of which 2K are ELLIS Members), growing by more than a 1K in 2025. It has all the curated news happening in the ELLIS Network over the previous month, including the list of new Members.

Subscribers

6.6K+

Open Rate

∅ 58%

similar industry open rates: ±15%

Jobs in the ELLIS Network

ELLIS has always promoted jobs linked to ELLIS Sites and Fellows & Scholars to the wider AI/ML community. Starting in early 2025, a dedicated monthly Jobs Newsletter was introduced to attract global talent to European opportunities, with targeted outreach to professionals in the US seeking to relocate. Promotions were opened to job related to any ELLIS Member and any PhD position, not only those in the ELLIS PhD Program.

Total Subscribers

650+

Average Open Rate

∅ 81%

Social Media

ELLIS maintains a presence on the following social media platforms: LinkedIn, Facebook, X (formerly known as Twitter), and Bluesky.

The most engaged social media platform for ELLIS is LinkedIn. In 2025, the posts by the ELLIS page have had over 3 million impressions and 350K engagements (liking, commenting, sharing posts) and has gained over 16K followers, growing to 29K followers in total.

X and Bluesky are similar platforms with very different audiences. While on X, ELLIS has over 14K followers, the growth has stagnated and tweets have had moderate impressions (300K) and engagement (26K) throughout 2025.

Bluesky, a relatively new platform, became an alternative to X for ELLIS in early 2025. Despite the significant growth early in the year to over 2.4K followers, that amount has remained unchanged since the middle of 2025.

Cross-Channel Campaigns

Campaigns are coordinated multi-media efforts to bring visibility to topics or themes across communication channels.

In 2025, the Communications Team launched 4 new campaigns.



Discover the Sites

The Discover the Sites campaign was launched in February 2025 and ran throughout the year to showcase the diversity and excellence of local ELLIS research hubs across Europe. The campaign featured six ELLIS Units, each presented through a dedicated website profile article and social media posts highlighting their main research areas, scientific achievements, and key people.

The campaign increased the visibility of individual ELLIS Sites while reinforcing the strength of ELLIS as a distributed European network.

Featured ELLIS Sites:

- [ELLIS Unit Munich: Tackling Key Challenges of Explainability, Reliability, and Trustworthiness in AI](#)
- [ELLIS Unit Trento: Bridging Disciplines for Foundational and Applied AI](#)
- [ELLIS Unit Alicante: Committed to Responsible AI with Positive Social Impact](#)
- [ELLIS Unit Lisbon: Advancing Human-Interacting AI and Natural Language Processing](#)
- [ELLIS Unit Vienna: Committed to Interdisciplinarity and Academic Freedom](#)
- [ELLIS Unit Warsaw: Pioneering AI Research in Sustainability & Innovation](#)

Beyond the Thesis – Featuring ELLIS PhD Alumni

The Beyond the Thesis campaign highlighted the experiences of ELLIS PhD alumni through a series of written interviews and short video features. Alumni shared reflections on the benefits and challenges of the ELLIS PhD Program, its impact on their career paths, and their perspectives on the future of AI research.

The campaign provided authentic insights into the long-term value of the ELLIS PhD Program, strengthened its visibility, and demonstrated its role in developing the next generation of AI researchers in Europe.

Featured ELLIS PhD Alumni:

- [Mathis Petrovich](#)
- [Edoardo Caldarelli](#)
- [Zifeng Ding](#)
- [Zhijing Jin](#)
- [Steffen Schneider](#)

Spotlight on

#WomenInELLIS

Women In ELLIS

The #WomenInELLIS campaign spotlighted the achievements, leadership, and innovation of women across the ELLIS network in the fields of AI and Machine Learning. The campaign kicked off in January 2025 and featured 51 female Members of ELLIS through dedicated profiles on social media.

The campaign promotes role models and inclusivity in AI, helping to address gender imbalance in the field while demonstrating the diversity of excellence within the ELLIS community.

[51 Members were featured →](#)

Meet the Board

With the announcement of the new ELLIS Board in 2025, the Communications Team designed a campaign to introduce the Board Members to the wider AI/ML community.

[See the 7 Board Members featured →](#)

Comms Resources

As part of the improved effort to reinforce the ELLIS Brand, the Communications Team designed and delivered communication resources and assets to the ELLIS staff, and in particular the ELLIS Sites, to use in promoting their own news and initiatives.

Along with offering an updated handbook on the communications and PR guidelines, the following assets were updated and/or created new:

- PPT & Slides templates
- ELLIS stock photos
- Logos and icons
- Social media templates
- Theme music

With the delivery of these assets, the Team gave introduction workshops to all the new resources, where to find them, and how to use them.

Intranet & Slack

The ELLIS Society Intranet was launched in August 2025 as a single source of information for all ELLIS staff. It includes guidelines, links to important documents and resources, and lists of people in the organisation.

The main chat tool used in the ELLIS Society is Slack, on which over 100 staff interact regularly.

Outreach

As a network of leading AI experts, ELLIS and its members have actively engaged in public discourse on AI developments in Europe, publishing statements and endorsing open letters on relevant topics.



“In the age of AI, people are the most valuable asset”

In 2025, Bernhard Schölkopf, Nuria Oliver, and Yann LeCun published an opinion piece in [Handelsblatt](#), [El Pais](#), and [Les Echos](#) on the future of AI in Europe, that investing in AI requires more than just infrastructure—it demands a sustained commitment to research, development, and talent acquisition. By attracting and nurturing top talent, Europe can establish a strong foundation for long-term leadership in AI, ensuring that the benefits of AI are realised for generations to come.

AI Summit in Paris

The [ELLIS Members' presence at the AI Action Summit](#) and their involvement in key AI initiatives show the collaborative strength of the network.

Additionally, the Society put out a statement welcoming the InvestAI initiative by the European Commission as a significant step toward strengthening Europe's AI ecosystem. By prioritising large-scale computing infrastructure, the initiative aligns with ELLIS's mission to support cutting-edge research, open collaboration, and talent-driven innovation.

[Read the full statement →](#)



Ursula von der Leyen, President of the European Commission and Bernhard Schölkopf, Former ELLIS Board President and Co-Founder of ELLIS Society at the AI Summit in Paris

AI for Good Global Summit

From 8–11 July 2025, the ELLIS Society participated in the AI for Good Global Summit in Geneva—an annual event organised by the International Telecommunication Union (ITU), the United Nations' (UN) leading agency for digital technologies, to explore how AI can advance sustainable development and address pressing global challenges. The Summit brings together thought leaders from research, industry, policy, and civil society to showcase AI applications with positive social impact.

ELLIS was present with a dedicated booth, where multiple people from the Society, including the Communications Team, ELLIS Unit Jena Coordinator, Scientific Coordinator, and the PhD & Postdoc Program Coordinator engaged with hundreds of visitors throughout the four-day event. The booth offered information about the ELLIS network, its mission to advance European excellence in machine learning, and details about the ELLIS PhD & Postdoc Program.

[Read more about the Summit →](#)

Lena Schadock and Christine Funke, ELLIS Communications Managers, and Conrad Philipp, ELLIS Unit Jena Coordinator, at the AI for Good Global Summit

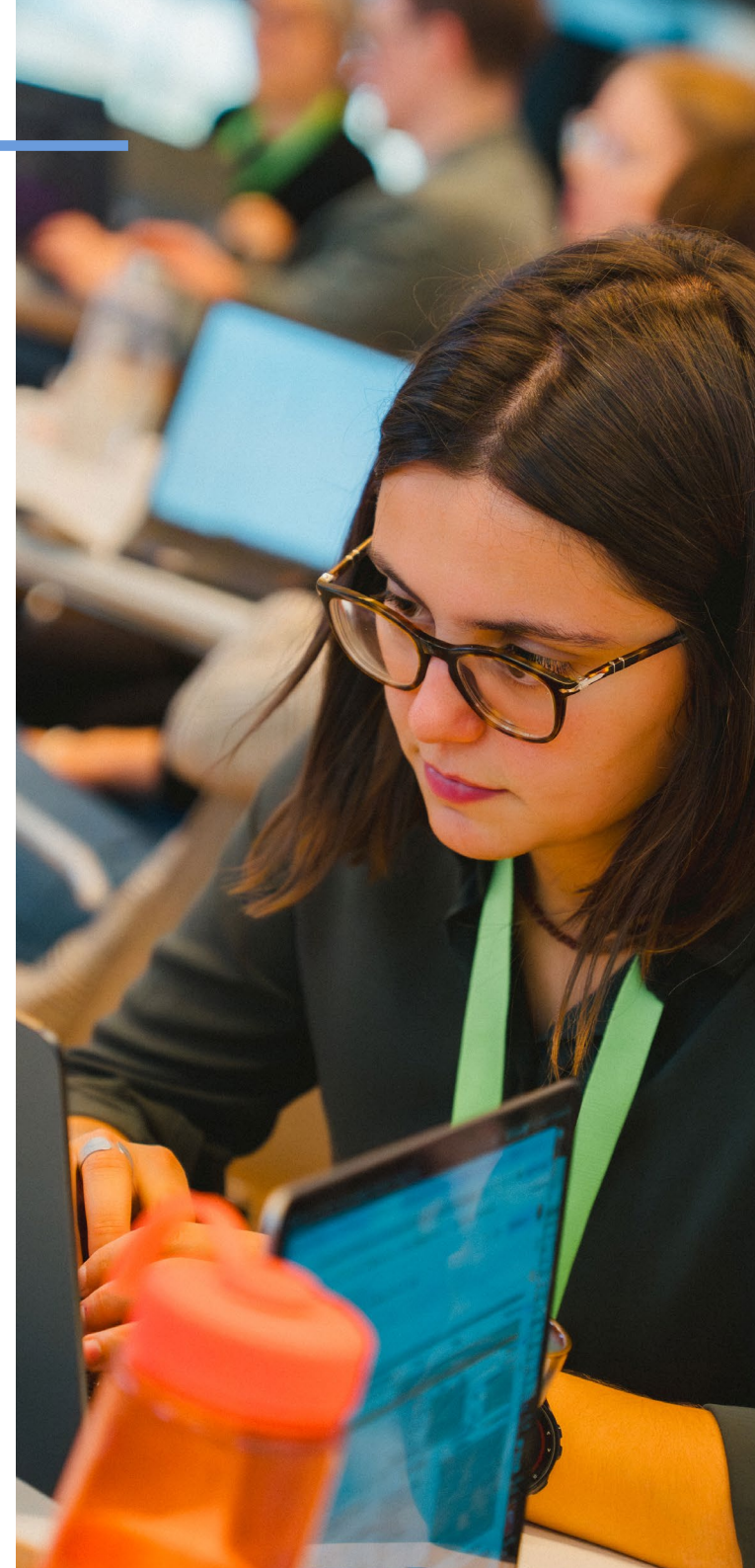


Governance

ELLIS Society is a registered non-profit association (*eingetragener Verein*) founded in 2018 by leading European AI scientists, legally established in Tübingen, Germany, and dedicated exclusively to advancing world-class research, education, and innovation in Artificial Intelligence across Europe.

ELLIS Society's governance structure operates through two complementary tiers – strategic scientific oversight and operational execution – to ensure scientific excellence, transparency, accountability, and effective collaboration across its pan-European network.

- **ELLIS Board:** Serves as the Society's governing body, composed of 9 elected members drawn from ELLIS Fellows and Scholars, each from a different European country, and currently chaired by Serge Belongie as President, with Nuria Oliver serving as Vice President and Torsten Sattler as Treasurer.
- **Executive Committee:** Implements the Board's strategy through coordinated operational and programme management across all ELLIS Sites and Areas.
- **Specialised Area Committees:** Covers Research Programs, Memberships, PhD Education, Relations, and Operations and ensuring domain-specific decision-making and quality control.
- **Annual General Assembly:** Functions as the decision-making body for elections, budget approval, and major strategic decisions.
- **Robust Bylaws:** Provides clear legal and procedural safeguards for membership, decision-making, and the protection of the Society's charitable mission.



Governance Structure

“ELLIS’s strong governance is the foundation upon which scientific excellence is built. In 2025, ELLIS has continued to reinforce the structures and accountability mechanisms that allow our network to grow and pursue its mission with confidence across Europe.”

Torsten Sattler, Board Treasurer and ELLIS Fellow

The Board is responsible for defining the long-term strategic direction, ensuring financial sustainability, approving major policies, and appointing the Executive Committee. Board Members are elected by the General Assembly for two-year renewable terms, ensuring democratic accountability.

Operational leadership is exercised by the **Executive Committee (ExCo)**, which implements the strategic direction set by the Board. The ExCo comprises the Chief of Staff (Daniela Diaconu), the Chief Operations Officer

(Celia Sánchez San Juan), the Area Directors, and a Delegated Board Member (Serge Belongie). The Executive Committee serves as the central decision-making body for all matters not requiring full Board approval, and is responsible for the Society’s Work Programme, cross-unit alignment, and day-to-day operations.

Scientific and operational activities are organised across five dedicated **Areas** (Relations, Research Programs, Memberships, PhD Program, and Operations) each led by an Area Director and supported by specialised committees and coordinators. This structure enables rigorous domain-specific oversight while maintaining coherence across the network.

The **General Assembly**, convened annually, brings together the full membership and holds ultimate authority over elections, statutory changes, budget approval, and other key decisions. Each member holds one vote, and a two-thirds majority is required for statutory amendments or dissolution, ensuring strong democratic safeguards.



ELLIS Board

Executive Board



Serge Belongie

Board President · Fellow

🇩🇰 UCPH



Nuria Oliver

Board Vice President · Unit

Director · Program

Director · Fellow

🇪🇸 ELLIS Alicante



Torsten Sattler

Board Treasurer · Fellow

🇩🇪 CTU

Board Members



Danica Kragic

Board Member · Fellow

🇸🇪 KTH



Florence d'Alché-Buc

Board Member · PhD

Program Area Director ·

Fellow

🇫🇷 Télécom Paris



Neil D. Lawrence

Board Member · Fellow

🇬🇧 Cambridge



Nicolò Cesa-Bianchi

Board Member · Fellows

& Scholars Selection

Committee Lead · UD ·

PD · Fellow

🇮🇹 UniMi



Oliver Stegle

Board Member · Unit

Director · Program

Director · Fellow

🇩🇪 DKFZ & EMBL



Samuel Kaski

Board Member · Unit

Director · Program

Director · Fellow

🇫🇮 ELLIS Finland & Aalto

🇬🇧 UoM

Board Coordination



Daniela Diaconu
Chief of Staff
ELLIS Society

Board Alumni



Andreas Geiger
Fellow
Uni Tübingen & MPI-IS



Barbara Caputo
Fellow
PolITO & IIT



Bernhard Schölkopf
Unit Director · Program
Director · Fellow
ELLIS Tübingen &
MPI-IS & TÜ.AI



Josef Sivic
Units Committee Lead ·
Unit Director · Fellow
CTU
ENS & Inria



Matthias Bethge
Unit Director · Program
Director · Fellow
Uni Tübingen & TÜ.AI



Max Welling
Program Director · Fellow
UvA



Nada Lavrač
Program Director · Fellow
JSI



Sepp Hochreiter
Unit Director · Fellow
JKU

Executive Committee (ExCo)



Serge Belongie
Board President



Daniela Diaconu
Chief of Staff



**Celia Sánchez
San Juan**
Chief Operations
Officer



Petri Myllymäki
Relations Area
Director



Pascal Frossard
Research
Programs Area
Director



**Tatiana
Tommasi**
Membership
Area Director



**Florence
d'Alché-Buc**
PhD Program
Area Director

Areas

Relations Area



Petri Myllymäki

Relations Area Director ·
Fellow
🇫🇮 UH



Nicu Sebe

Public Affairs Committee
Lead · Unit Director ·
Program Director · Fellow
🇮🇹 UniTrento



Cecilia Zanazzo

Public Affairs Committee
Coordinator
🇮🇹 UniTrento



Nuria Oliver

Corporate Relations/
Sponsorship Committee
Lead
🇪🇸 ELLIS Alicante



Rebeca de Miguel

Corporate Relations/
Sponsorship Committee
Coordinator
🇪🇸 ELLIS Alicante



Matthias Bethge

Entrepreneurial/VC
Committee Lead
🇩🇪 Uni Tübingen

Research Programs Area



Pascal Frossard

Research Programs
Area Director · Unit
Director · Fellow
🇨🇭 EPFL



Yair Weiss

Research Programs
Committee Lead ·
Program Director ·
Fellow
🇮🇱 HUJI



Ana Saraiva Ayash

Research Programs
Committee
Coordinator
🇮🇹 IST



Mario Fritz

Lighthouse
Coordination
Committee Lead
🇩🇪 CISP & Uds



Miriam Schwartz

Lighthouse
Coordination
Committee
Coordinator
🇩🇪 CISP & Uds



Neil Lawrence

Strategic Agenda
Co-Lead
🇬🇧 Cambridge



**Jessica
Montgomery**

Strategic Agenda
Co-Lead
🇬🇧 Cambridge

Membership Area



Tatiana Tommasi

Membership Area
Director · Unit Director ·
Scholar
🇮🇹 PoliT0



Nicolò Cesa-Bianchi

Fellows & Scholars
Selection Committee Lead
🇮🇹 UniMi



Giulia Clerici

Fellows & Fellows
Selection Committee
Coordinator
🇮🇹 UniMi



Josef Sivic

Membership Committee
Lead & Units Committee
Lead
🇨🇪 CTU



Barbara Caputo

Membership Committee
🇮🇹 PoliT0 & IIT



Sepp Hochreiter

Membership Committee
🇦🇹 JKU



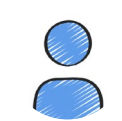
Josephine Krönke

Membership Committee
Coordinator
🇩🇪 MPI-IS & ELLIS Society



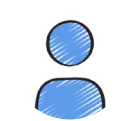
Marcela Kamenska

Units Committee
Coordinator
🇨🇪 CTU



Fanny Garel

Units Committee
Coordinator
🇨🇪 CTU



Kimberly Cole

Contributions Coordinator
🇬🇧 Cambridge



Naidine Escoffery

Contributions Coordinator
🇬🇧 Cambridge



Sol Miah

Contributions Coordinator
🇬🇧 Cambridge

PhD Program Area



Florence d'Alché-Buc

PhD Program Area
Director & PhD Program
Committee Lead · Board
Member · Fellow
🇫🇷 Télécom Paris



Charlotte Delage

PhD Program Coordinator
🇫🇷 Télécom Paris



Adela Pranindiaty

PhD Industry Track
Coordinator
🇳🇱 UvA



Daniel Selinger

PhD Program Tech Lead
🇳🇱 ELLIS Society



Bernt Schiele

PhD Award Lead · Unit
Director · Program
Director · Fellow
🇩🇪 Uds & MPI-INF

Operations Area



Celia Sánchez San

Juan

Chief Operations
Officer



Josephine Krönke

Administrative
Assistant
MPI-IS



Conrad Philipp

Assistant Treasurer
& Unit Coordinators'
Coordinator
MPI-BGC



Christine Funke

Communications
Manager
MPI-IS



Lena Schadock

Communications
Manager
MPI-IS



Daniel Selinger

Tech Lead
ELLIS Society



Arnout Devos

Scientific
Coordinator
ETH Zurich

Appointment of the New ELLIS COO

In June 2025, ELLIS welcomed Celia Sánchez San Juan as its new Chief Operating Officer. As Co-Founder of ELLIS Alicante Unit Foundation, Celia brings extensive experience in operational and program management in AI-driven environments. In her role, she oversees the Society's operations, supporting coordination across ELLIS Units and Programs. Her appointment strengthens the network's organisational capacity, ensuring alignment of activities across Europe and enabling effective support for collaborative research, strategic partnerships, and growth of Europe's AI research ecosystem.

Looking back on her first year, Celia shares: "Since joining ELLIS in June 2025, my priority has been strengthening the operational backbone of our network. This Annual Report is a demonstration of our scientific impact and our commitment to transparency with our stakeholders, members, and the society we serve."

2nd ELLIS Coordinators Retreat

From 6–8 October 2025, ELLIS held its 2nd Coordinators Retreat, hosted by the three Dutch ELLIS Units in Nijmegen, Delft, and Amsterdam. The retreat brought together ELLIS Coordinators and staff from 21 ELLIS Units, the ELLIS Institute Finland, the ELLIS Operations Team, Area Coordinators, and representatives from the ELSA and ELIAS networks. By bringing ELLIS staff and coordinators together from across Europe, the retreat strengthened ELLIS' capacity to engage in high-impact scientific activities, align priorities, support cross-unit research synergies, and contribute to Europe's broader research excellence in AI.



Group picture at the
Coordinators Retreat on
day 2 in Delft



Imprint

Publisher

ELLIS Society e.V.
Max-Planck-Ring 4
72076 Tübingen

Contact Information

info@ellis.eu · <https://ellis.eu>

Project Team

Celia Sánchez San Juan, Chief Operations Officer, ELLIS Society
Christine Funke, Communications Manager, ELLIS Society
Lena Schadock, Communications Manager, ELLIS Society

Contributors

Ana Saraiva Ayash, Research Programs Coordinator, Unit Lisbon
Andreas Geiger, Scholar Inbox, University of Tübingen
Aygun Garayeva, PR Manager, ELIAS
Charlotte Delage, PhD Program Coordinator, Unit Paris
Conrad Philipp, Unit Coordinator's Coordinator, Unit Jena
Giulia Clerici, Fellows & Scholars Selection Committee Coordinator, Unit Milan
Josephine Krönke, Administrative Assistant, ELLIS Society
Marcel Ackermann, Scientific Coordinator, Unit Darmstadt & ELIZA
Mariana Carola, Communication & Dissemination Manager, ELLIOT
Markus Flicke, Scholar Inbox, University of Tübingen
Miriam Schwartz, Lighthouse Coordination Committee Coordinator, Unit Saarbrücken
Zahra Sobhaninia, PhD Student at the University of Copenhagen, Department of Computer Science

Layout & Graphic Design

4iMedia GmbH

Photography Credits

Albert Stevanus: p. 76, 77, 82
Christoffer Regild: p.2, 5
Damian Fużyński · IDEAS Research Institute: p. 25, 27, 31
Elio Germani: p.7
Svea Pietschmann · Max Delbrück Center: p.13
UN Geneva: p.75
Vesa-Matti Väärä: p.6
Wolfram Scheible: p. 11, 12, 20, 29, 30, 33, 66

Financial Support

[Max Planck Institute for Intelligent Systems](#)
[Ministry of Science, Research and the Arts of Baden-Württemberg](#)